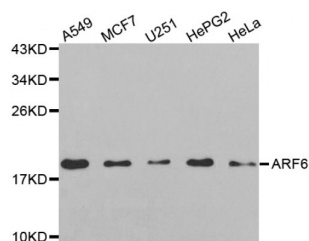


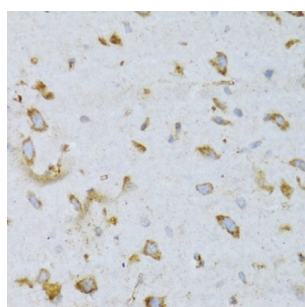
Abbexa Ltd, Innovation Centre, Cambridge Science Park, Cambridge, CB4 0EY, UK
Telephone: +44 (0) 1223 755950 - Fax: +44 (0) 1223 755951 - E-Mail: info@abbexa.com

ADP-Ribosylation Factor 6 (ARF6) Antibody

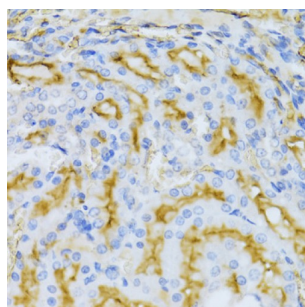
Catalogue No.: abx002266



Western blot analysis of extracts of various cell lines, using ARF6 antibody (abx002266) at 1:250 dilution.



Immunohistochemistry of paraffin-embedded rat brain using ARF6 Antibody (abx002266) at dilution of 1/100 (40x lens).



Immunohistochemistry of paraffin-embedded rat kidney using ARF6 Antibody (abx002266) at dilution of 1/100 (40x lens).

ARF6 Antibody is a Rabbit Polyclonal antibody against ARF6. This gene encodes a member of the human ARF gene family, which is part of the RAS superfamily. The ARF genes encode small guanine nucleotide-binding proteins that stimulate the ADP-ribosyltransferase activity of cholera toxin and play a role in vesicular trafficking and as activators of phospholipase D. The product of this gene is localized to the plasma membrane, and regulates vesicular trafficking, remodelling of membrane lipids, and signaling pathways that lead to actin remodeling. A pseudogene of this gene is located on chromosome 7.

Target:	ARF6
Reactivity:	Human, Rat
Host:	Rabbit
Clonality:	Polyclonal
Tested Applications:	WB, IHC

Abbexa Ltd, Innovation Centre, Cambridge Science Park, Cambridge, CB4 0EY, UK
Telephone: +44 (0) 1223 755950 - Fax: +44 (0) 1223 755951 - E-Mail: info@abbexa.com

Recommended dilutions: WB: 1/100 - 1/500, IHC: 1/50 - 1/100. Optimal dilutions/concentrations should be determined by the end user.

Immunogen: A synthetic peptide of human ARF6.

Purification: Affinity purified.

Form: Liquid

Isotype: IgG

Conjugation: Unconjugated

Storage: Aliquot and store at -20 °C. Avoid repeated freeze/thaw cycles.

Molecular Weight: Calculated MW: 20 kDa
Observed MW: 19 kDa

Swiss Prot: [P62330](#)

GeneID: [382](#)

Gene Symbol: ARF6

Concentration: > 1 mg/ml

Buffer: PBS, pH 7.3, 0.02% sodium azide, 50% glycerol.

Note: This product is for research use only.