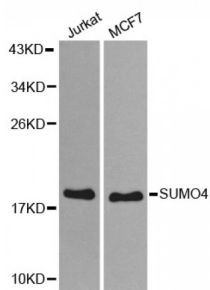


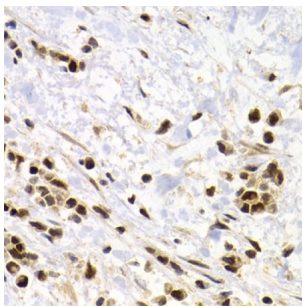
Abbexa Ltd, Innovation Centre, Cambridge Science Park, Cambridge, CB4 0EY, UK
Telephone: +44 (0) 1223 755950 - Fax: +44 (0) 1223 755951 - E-Mail: info@abbexa.com

Small Ubiquitin-Related Modifier 4 (SUMO4) Antibody

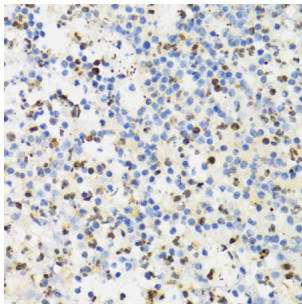
Catalogue No.: abx002229



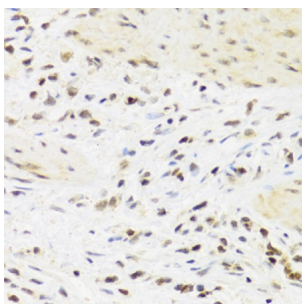
Western blot analysis of extracts of various cell lines, using SUMO4 antibody (abx002229) at 1:800 dilution.



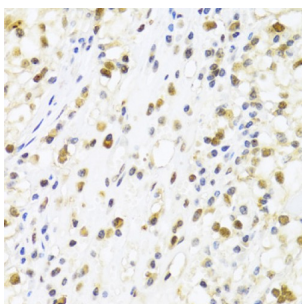
Immunohistochemistry of paraffin-embedded human kidney cancer using SUMO4 Antibody (abx002229) at dilution of 1/200 (40x lens).



Immunohistochemistry of paraffin-embedded human appendicitis using SUMO4 Antibody (abx002229) at dilution of 1/100 (40x lens).



Immunohistochemistry of paraffin-embedded human breast cancer using SUMO4 Antibody (abx002229) at dilution of 1/100 (40x lens).



Immunohistochemistry of paraffin-embedded human kidney cancer using SUMO4 Antibody (abx002229) at dilution of 1/100 (40x lens).

SUMO4 Antibody is a Rabbit Polyclonal antibody against SUMO4. This gene is a member of the SUMO gene family. This family

Abbexa Ltd, Innovation Centre, Cambridge Science Park, Cambridge, CB4 0EY, UK
Telephone: +44 (0) 1223 755950 - Fax: +44 (0) 1223 755951 - E-Mail: info@abbexa.com

of genes encode small ubiquitin-related modifiers that are attached to proteins and control the target proteins' subcellular localization, stability, or activity. The protein described in this record is located in the cytoplasm and specifically modifies IKBA, leading to negative regulation of NF-kappa-B-dependent transcription of the IL12B gene. A specific polymorphism in this SUMO gene, which leads to the M55V substitution, has been associated with type I diabetes. The RefSeq contains this polymorphism.

Target: SUMO4

Reactivity: Human, Mouse

Host: Rabbit

Clonality: Polyclonal

Tested Applications: WB, IHC

Recommended dilutions: WB: 1/1000 - 1/2000, IHC: 1/100 - 1/300. Optimal dilutions/concentrations should be determined by the end user.

Immunogen: A synthetic peptide of human SUMO4.

Purification: Affinity purified.

Form: Liquid

Isotype: IgG

Conjugation: Unconjugated

Storage: Aliquot and store at -20 °C. Avoid repeated freeze/thaw cycles.

Molecular Weight: Calculated MW: 10 kDa
Observed MW: 18 kDa

Swiss Prot: [Q6EEV6](#)

GeneID: [387082](#)

Gene Symbol: SUMO4

Concentration: > 1 mg/ml

Buffer: PBS, pH 7.3, 0.02% sodium azide, 50% glycerol.

Note: This product is for research use only.