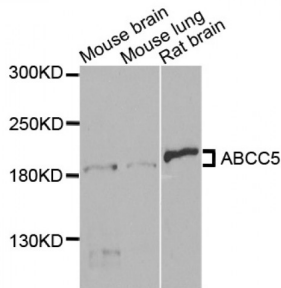


ATP Binding Cassette Transporter C5 (ABCC5) Antibody

Catalogue No.: abx002191



Western blot analysis of extracts of various cell lines, using ABCC5 antibody (abx002191) at 1/1000 dilution.

ABCC5 Antibody is a Rabbit Polyclonal antibody against ABCC5. The protein encoded by this gene is a member of the superfamily of ATP-binding cassette (ABC) transporters. ABC proteins transport various molecules across extra- and intra-cellular membranes. ABC genes are divided into seven distinct subfamilies (ABC1, MDR/TAP, MRP, ALD, OABP, GCN20, White). This protein is a member of the MRP subfamily which is involved in multi-drug resistance. This protein functions in the cellular export of its substrate, cyclic nucleotides. This export contributes to the degradation of phosphodiesterases and possibly an elimination pathway for cyclic nucleotides. Studies show that this protein provides resistance to thiopurine anticancer drugs, 6-mercaptopurine and thioguanine, and the anti-HIV drug 9-(2-phosphonylmethoxyethyl)adenine.

Target: ABCC5

Reactivity: Human, Mouse, Rat

Host: Rabbit

Clonality: Polyclonal

Tested Applications: WB

Recommended dilutions: WB: 1/1000 - 1/2000. Optimal dilutions/concentrations should be determined by the end user.

Immunogen: A synthetic peptide of human ABCC5.

Purification: Affinity purified.

Form: Liquid

Isotype: IgG

Conjugation: Unconjugated

Storage: Aliquot and store at -20 °C. Avoid repeated freeze/thaw cycles.

Abbexa Ltd, Innovation Centre, Cambridge Science Park, Cambridge, CB4 0EY, UK
Telephone: +44 (0) 1223 755950 - Fax: +44 (0) 1223 755951 - E-Mail: info@abbexa.com

Molecular Weight: Calculated MW: 23 kDa/25 kDa/155 kDa/160 kDa
Observed MW: 185 kDa

Swiss Prot: [O15440](#)

GeneID: [10057](#)

Gene Symbol: ABCC5

Concentration: > 1 mg/ml

Buffer: PBS, pH 7.3, 0.02% sodium azide, 50% glycerol.

Note: This product is for research use only.