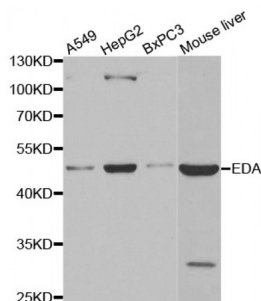


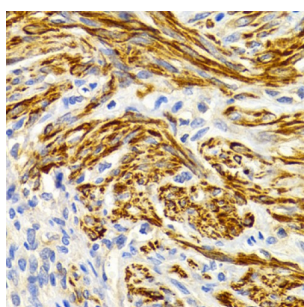
Abbexa Ltd, Innovation Centre, Cambridge Science Park, Cambridge, CB4 0EY, UK
 Telephone: +44 (0) 1223 755950 - Fax: +44 (0) 1223 755951 - E-Mail: info@abbexa.com

Ectodysplasin A (EDA) Antibody

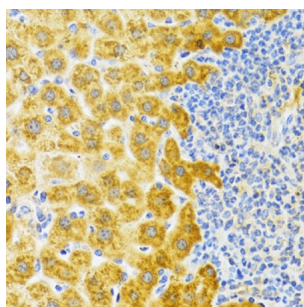
Catalogue No.: abx002133



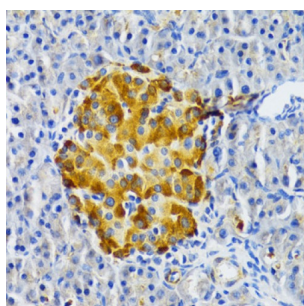
Western blot analysis of extracts of various cell lines, using EDA antibody (abx002133) at 1:400 dilution.



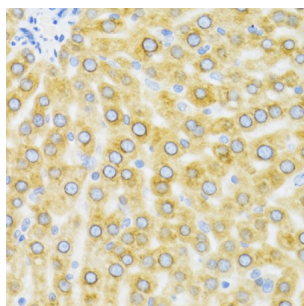
Immunohistochemistry of paraffin-embedded human uterine cancer using EDA Antibody (abx002133) at dilution of 1/200 (40x lens).



Immunohistochemistry of paraffin-embedded rat liver using EDA Antibody (abx002133) at dilution of 1/100 (40x lens).

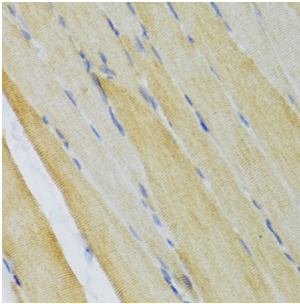


Immunohistochemistry of paraffin-embedded rat pancreas using EDA Antibody (abx002133) at dilution of 1/100 (40x lens).

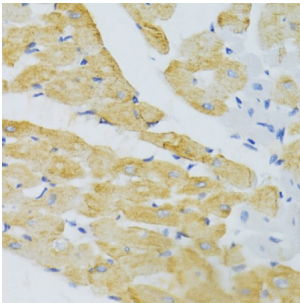


Immunohistochemistry of paraffin-embedded mouse liver using EDA Antibody (abx002133) at dilution of 1/100 (40x lens).

Abbexa Ltd, Innovation Centre, Cambridge Science Park, Cambridge, CB4 0EY, UK
Telephone: +44 (0) 1223 755950 - Fax: +44 (0) 1223 755951 - E-Mail: info@abbexa.com



Immunohistochemistry of paraffin-embedded mouse skeletal muscle using EDA Antibody (abx002133) at dilution of 1/100 (40x lens).



Immunohistochemistry of paraffin-embedded mouse heart using EDA Antibody (abx002133) at dilution of 1/100 (40x lens).

EDA Antibody is a Rabbit Polyclonal antibody against EDA. The protein encoded by this gene is a type II membrane protein that can be cleaved by furin to produce a secreted form. The encoded protein, which belongs to the tumor necrosis factor family, acts as a homotrimer and may be involved in cell-cell signaling during the development of ectodermal organs. Defects in this gene are a cause of ectodermal dysplasia, anhidrotic, which is also known as X-linked hypohidrotic ectodermal dysplasia. Several transcript variants encoding many different isoforms have been found for this gene.

Target: EDA

Reactivity: Human, Mouse, Rat

Host: Rabbit

Clonality: Polyclonal

Tested Applications: WB, IHC

Recommended dilutions: WB: 1/500 - 1/2000, IHC: 1/50 - 1/200. Optimal dilutions/concentrations should be determined by the end user.

Immunogen: A synthetic peptide of human EDA.

Purification: Affinity purified.

Form: Liquid

Isotype: IgG

Abbexa Ltd, Innovation Centre, Cambridge Science Park, Cambridge, CB4 0EY, UK
Telephone: +44 (0) 1223 755950 - Fax: +44 (0) 1223 755951 - E-Mail: info@abbexa.com

Conjugation:	Unconjugated
Storage:	Aliquot and store at -20 °C. Avoid repeated freeze/thaw cycles.
Molecular Weight:	Calculated MW: 14 kDa/15 kDa/40 kDa/41 kDa Observed MW: 48 kDa
Swiss Prot:	Q92838
GeneID:	1896
Gene Symbol:	EDA
Concentration:	> 1 mg/ml
Buffer:	PBS, pH 7.3, 0.02% sodium azide, 50% glycerol.
Note:	This product is for research use only.