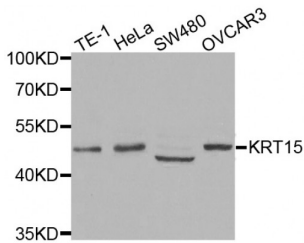


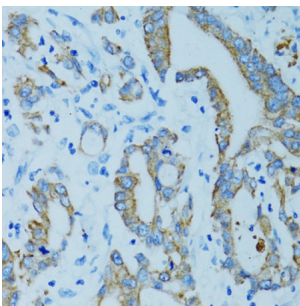
Abbexa Ltd, Innovation Centre, Cambridge Science Park, Cambridge, CB4 0EY, UK
Telephone: +44 (0) 1223 755950 - Fax: +44 (0) 1223 755951 - E-Mail: info@abbexa.com

Keratin 15 (KRT15) Antibody

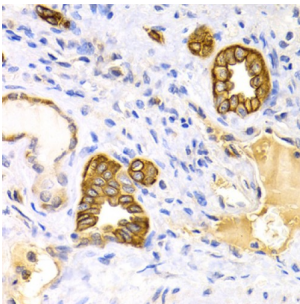
Catalogue No.: abx002050



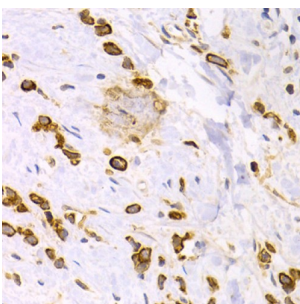
Western blot analysis of extracts of various cell lines, using KRT15 antibody (abx002050) at 1:400 dilution.



Immunohistochemistry of paraffin-embedded human colon carcinoma using KRT15 antibody (abx002050) at dilution of 1/100 (40x lens).



Immunohistochemistry of paraffin-embedded human kidney using KRT15 antibody (abx002050) at dilution of 1/200 (40x lens).



Immunohistochemistry of paraffin-embedded human gastric cancer using KRT15 antibody (abx002050) at dilution of 1/200 (40x lens).

KRT15 Antibody is a Rabbit Polyclonal antibody against KRT15. The protein encoded by this gene is a member of the keratin gene family. The keratins are intermediate filament proteins responsible for the structural integrity of epithelial cells and are subdivided into cytokeratins and hair keratins. Most of the type I cytokeratins consist of acidic proteins which are arranged in pairs of heterotypic keratin chains and are clustered in a region on chromosome 17q21.2. this gene.

Target: KRT15

Abbexa Ltd, Innovation Centre, Cambridge Science Park, Cambridge, CB4 0EY, UK
Telephone: +44 (0) 1223 755950 - Fax: +44 (0) 1223 755951 - E-Mail: info@abbexa.com

Reactivity: Human, Mouse

Host: Rabbit

Clonality: Polyclonal

Tested Applications: WB, IHC

Recommended dilutions: WB: 1/500 - 1/2000, IHC: 1/50 - 1/200. Optimal dilutions/concentrations should be determined by the end user.

Immunogen: Recombinant protein of human KRT15.

Purification: Affinity purified.

Form: Liquid

Isotype: IgG

Conjugation: Unconjugated

Storage: Aliquot and store at -20 °C. Avoid repeated freeze/thaw cycles.

Molecular Weight: Calculated MW: 28 kDa/49 kDa
Observed MW: 48 kDa

Swiss Prot: [P19012](#)

GeneID: [3866](#)

Gene Symbol: KRT15

Concentration: > 1 mg/ml

Buffer: PBS, pH 7.3, 0.02% sodium azide, 50% glycerol.

Note: This product is for research use only.