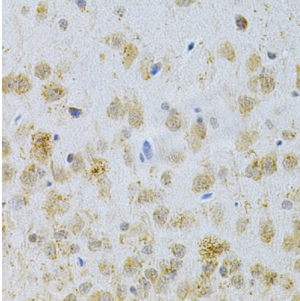


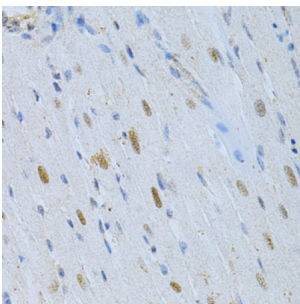
Abbexa Ltd, Innovation Centre, Cambridge Science Park, Cambridge, CB4 0EY, UK  
Telephone: +44 (0) 1223 755950 - Fax: +44 (0) 1223 755951 - E-Mail: info@abbexa.com

## **Microtubule Associated Protein 2 (MAP2) Antibody**

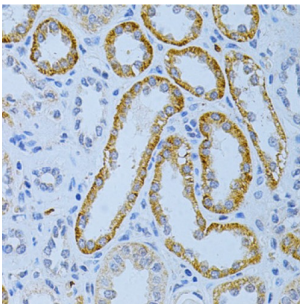
Catalogue No.: abx002009



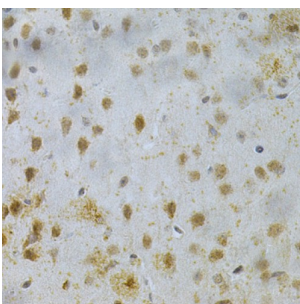
Immunohistochemistry of paraffin-embedded rat brain using MAP2 Antibody (abx002009) at dilution of 1/200 (40x lens).



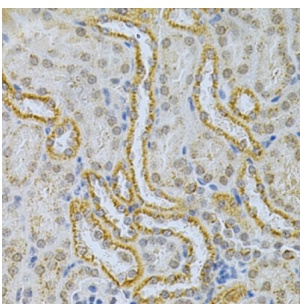
Immunohistochemistry of paraffin-embedded rat heart using MAP2 Antibody (abx002009) at dilution of 1/200 (40x lens).



Immunohistochemistry of paraffin-embedded human kidney cancer using MAP2 Antibody (abx002009) at dilution of 1/200 (40x lens).



Immunohistochemistry of paraffin-embedded mouse brain using MAP2 Antibody (abx002009) at dilution of 1/200 (40x lens).



Immunohistochemistry of paraffin-embedded mouse kidney using MAP2 Antibody (abx002009) at dilution of 1/200 (40x lens).

MAP2 Antibody is a Rabbit Polyclonal antibody against MAP2. This gene encodes a protein that belongs to the microtubule-

Abbexa Ltd, Innovation Centre, Cambridge Science Park, Cambridge, CB4 0EY, UK  
Telephone: +44 (0) 1223 755950 - Fax: +44 (0) 1223 755951 - E-Mail: [info@abbexa.com](mailto:info@abbexa.com)

associated protein family. The proteins of this family are thought to be involved in microtubule assembly, which is an essential step in neurogenesis. The products of similar genes in rat and mouse are neuron-specific cytoskeletal proteins that are enriched in dendrites, implicating a role in determining and stabilizing dendritic shape during neuron development. A number of alternatively spliced variants encoding distinct isoforms have been described.

**Target:** MAP2

**Reactivity:** Human, Mouse, Rat

**Host:** Rabbit

**Clonality:** Polyclonal

**Tested Applications:** WB, IHC, IF/ICC

**Recommended dilutions:** WB: 1/500 - 1/2000, IHC: 1/50 - 1/200, IF/ICC: 1/50 - 1/100. Optimal dilutions/concentrations should be determined by the end user.

**Immunogen:** Recombinant protein of human MAP2.

**Purification:** Affinity purified.

**Form:** Liquid

**Isotype:** IgG

**Conjugation:** Unconjugated

**Storage:** Aliquot and store at -20 °C. Avoid repeated freeze/thaw cycles.

**Molecular Weight:** Calculated MW: 49 kDa/58 kDa/199 kDa  
Observed MW: Refer to figures

**Swiss Prot:** [P11137](#)

**GeneID:** [4133](#)

**Gene Symbol:** Map2

**Concentration:** > 1 mg/ml

**Buffer:** PBS, pH 7.3, 0.02% sodium azide, 50% glycerol.

**Note:** This product is for research use only.