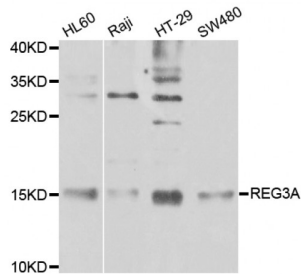


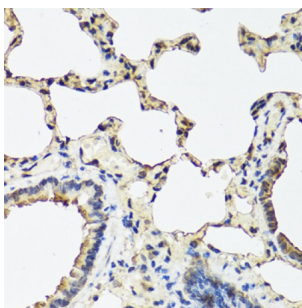
Abbexa Ltd, Innovation Centre, Cambridge Science Park, Cambridge, CB4 0EY, UK
 Telephone: +44 (0) 1223 755950 - Fax: +44 (0) 1223 755951 - E-Mail: info@abbexa.com

Regenerating Islet Derived Protein 3 Alpha (REG3A) Antibody

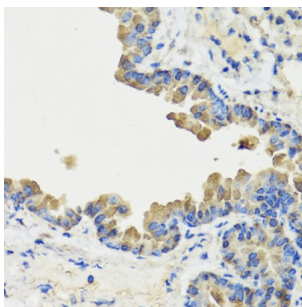
Catalogue No.: abx001713



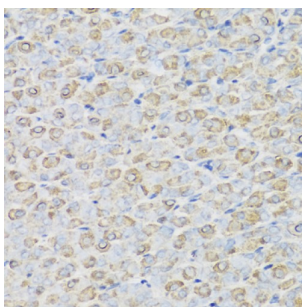
Western blot analysis of extracts of various cell lines, using REG3A antibody (abx001713) at 1/1000 dilution.



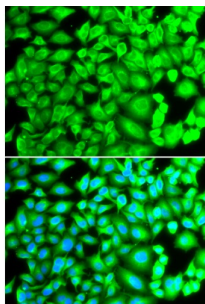
Immunohistochemistry of paraffin-embedded rat lung using REG3A antibody (abx001713) at dilution of 1/100 (40x lens).



Immunohistochemistry of paraffin-embedded mouse lung using REG3A antibody (abx001713) at dilution of 1/100 (40x lens).



Immunohistochemistry of paraffin-embedded mouse stomach using REG3A antibody (abx001713) at dilution of 1/100 (40x lens).



Immunofluorescence analysis of MCF-7 cells using REG3A antibody (abx001713). Blue: DAPI for nuclear staining.

REG3A Antibody is a Rabbit Polyclonal antibody against REG3A. This gene encodes a pancreatic secretory protein that may be

Abbexa Ltd, Innovation Centre, Cambridge Science Park, Cambridge, CB4 0EY, UK
Telephone: +44 (0) 1223 755950 - Fax: +44 (0) 1223 755951 - E-Mail: info@abbexa.com

involved in cell proliferation or differentiation. It has similarity to the C-type lectin superfamily. The enhanced expression of this gene is observed during pancreatic inflammation and liver carcinogenesis. Alternate splicing results in multiple transcript variants that encode the same protein.[provided by RefSeq, Dec 2010].

Target:	REG3A
Reactivity:	Human, Mouse, Rat
Host:	Rabbit
Clonality:	Polyclonal
Tested Applications:	WB, IHC, IF/ICC
Recommended dilutions:	WB: 1/500 - 1/2000, IHC: 1/50 - 1/100, IF/ICC: 1/50 - 1/200. Optimal dilutions/concentrations should be determined by the end user.
Immunogen:	Recombinant protein of human REG3A.
Purification:	Affinity purified.
Form:	Liquid
Isotype:	IgG
Conjugation:	Unconjugated
Storage:	Aliquot and store at -20 °C. Avoid repeated freeze/thaw cycles.
Molecular Weight:	Calculated MW: 19 kDa Observed MW: 15 kDa
Swiss Prot:	Q06141
GeneID:	5068
Gene Symbol:	REG3A
Concentration:	> 1 mg/ml
Buffer:	PBS, pH 7.3, 0.02% sodium azide, 50% glycerol.
Note:	This product is for research use only.