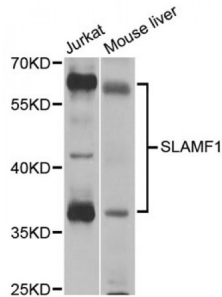


Signaling Lymphocytic Activation Molecule Family Member 1 / CD150 (SLAMF1) Antibody

Catalogue No.: abx001661



Western blot analysis of extracts of various cell lines, using SLAMF1 antibody (abx001661) at 1/1000 dilution.

SLAMF1 Antibody is a Rabbit Polyclonal antibody against SLAMF1. Following occupancy of the T cell receptor by antigen, T cell proliferation and lymphokine production are determined by a second costimulatory signal delivered by a ligand expressed on antigen-presenting cells. SLAM (for signaling lymphocyte-activation molecule, also designated CDw150) is a novel receptor on T cells that, when engaged, potentiates T cell expansion in a CD28-independent manner. SAP (for SLAM-associated protein) contains an SH2 domain and functions to inhibit SH-PTP2 recruitment to the SLAM docking site, an activity induced by Fyn phosphorylation of SLAM. Mutations of the SAP gene may be associated with X-linked lympho-proliferative disease (XLP).

Target: SLAMF1

Reactivity: Human, Mouse

Host: Rabbit

Clonality: Polyclonal

Tested Applications: WB

Recommended dilutions: WB: 1/500 - 1/2000. Optimal dilutions/concentrations should be determined by the end user.

Immunogen: Recombinant protein of human SLAMF1.

Purification: Affinity purified.

Form: Liquid

Isotype: IgG

Conjugation: Unconjugated

Storage: Aliquot and store at -20 °C. Avoid repeated freeze/thaw cycles.

Abbexa Ltd, Innovation Centre, Cambridge Science Park, Cambridge, CB4 0EY, UK
Telephone: +44 (0) 1223 755950 - Fax: +44 (0) 1223 755951 - E-Mail: info@abbexa.com

Molecular Weight: Calculated MW: 33 kDa/37 kDa/40 kDa
Observed MW: 37 kDa, 65 kDa

Swiss Prot: [Q13291](#)

GeneID: [6504](#)

Gene Symbol: SLAMF1

Concentration: > 1 mg/ml

Buffer: PBS, pH 7.3, 0.02% sodium azide, 50% glycerol.

Note: This product is for research use only.