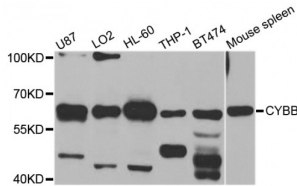


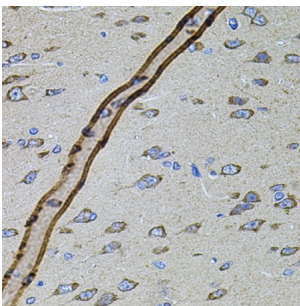
Abbexa Ltd, Innovation Centre, Cambridge Science Park, Cambridge, CB4 0EY, UK
 Telephone: +44 (0) 1223 755950 - Fax: +44 (0) 1223 755951 - E-Mail: info@abbexa.com

Cytochrome B-245, Beta Polypeptide (CYBB) Antibody

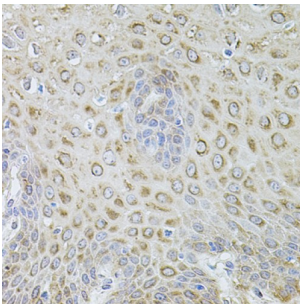
Catalogue No.: abx001378



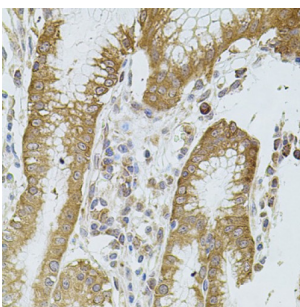
Western blot analysis of extracts of various cell lines, using CYBB antibody (abx001378) at 1/1000 dilution.



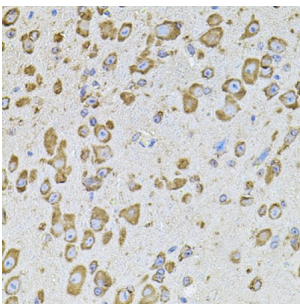
Immunohistochemistry of paraffin-embedded rat brain using CYBB antibody (abx001378) at dilution of 1/100 (40x lens).



Immunohistochemistry of paraffin-embedded human esophagus using CYBB antibody (abx001378) at dilution of 1/100 (40x lens).



Immunohistochemistry of paraffin-embedded human stomach using CYBB antibody (abx001378) at dilution of 1/100 (40x lens).



Immunohistochemistry of paraffin-embedded mouse brain using CYBB antibody (abx001378) at dilution of 1/100 (40x lens).

CYBB Antibody is a Rabbit Polyclonal antibody against CYBB. Cytochrome b (-245) is composed of cytochrome b alpha (CYBA)

Abbexa Ltd, Innovation Centre, Cambridge Science Park, Cambridge, CB4 0EY, UK
Telephone: +44 (0) 1223 755950 - Fax: +44 (0) 1223 755951 - E-Mail: info@abbexa.com

and beta (CYBB) chain. It has been proposed as a primary component of the microbicidal oxidase system of phagocytes. CYBB deficiency is one of five described biochemical defects associated with chronic granulomatous disease (CGD). In this disorder, there is decreased activity of phagocyte NADPH oxidase; neutrophils are able to phagocytize bacteria but cannot kill them in the phagocytic vacuoles. The cause of the killing defect is an inability to increase the cell's respiration and consequent failure to deliver activated oxygen into the phagocytic vacuole. [provided by RefSeq, Jul 2008].

Target:	CYBB
Reactivity:	Human, Mouse, Rat
Host:	Rabbit
Clonality:	Polyclonal
Tested Applications:	WB, IHC
Recommended dilutions:	WB: 1/500 - 1/2000, IHC: 1/50 - 1/200. Optimal dilutions/concentrations should be determined by the end user.
Immunogen:	Recombinant protein of human CYBB.
Purification:	Affinity purified.
Form:	Liquid
Isotype:	IgG
Conjugation:	Unconjugated
Storage:	Aliquot and store at -20 °C. Avoid repeated freeze/thaw cycles.
Molecular Weight:	Calculated MW: 65 kDa Observed MW: 65 kDa
Swiss Prot:	P04839
GeneID:	1536
Gene Symbol:	CYBB
Concentration:	> 1 mg/ml
Buffer:	PBS, pH 7.3, 0.02% sodium azide, 50% glycerol.
Note:	This product is for research use only.