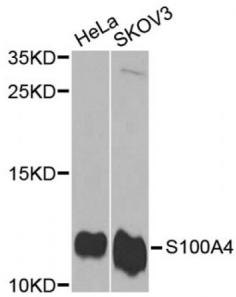


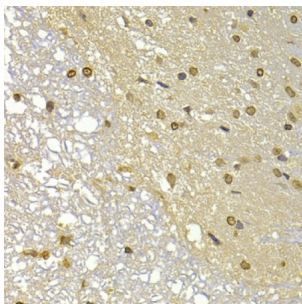
Abbexa Ltd, Innovation Centre, Cambridge Science Park, Cambridge, CB4 0EY, UK
 Telephone: +44 (0) 1223 755950 - Fax: +44 (0) 1223 755951 - E-Mail: info@abbexa.com

Protein S100-A4 (S100A4) Antibody

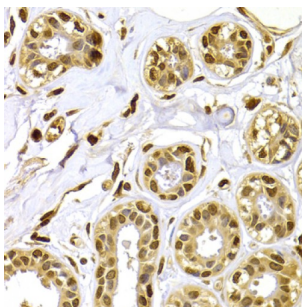
Catalogue No.: abx001374



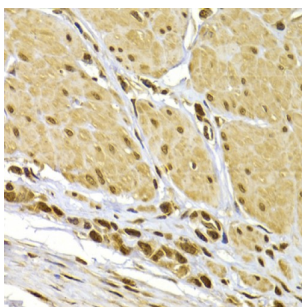
Western blot analysis of extracts of various cell lines, using S100A4 antibody (abx001374) at 1/1000 dilution.



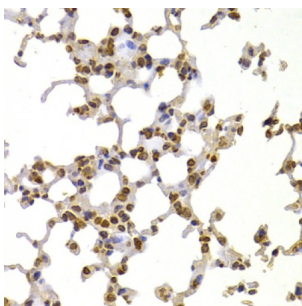
Immunohistochemistry of paraffin-embedded rat brain using S100A4 antibody (abx001374) at dilution of 1/100 (40x lens).



Immunohistochemistry of paraffin-embedded human mammary gland using S100A4 antibody (abx001374) at dilution of 1/100 (40x lens).



Immunohistochemistry of paraffin-embedded human gastric cancer using S100A4 antibody (abx001374) at dilution of 1/100 (40x lens).



Immunohistochemistry of paraffin-embedded mouse lung using S100A4 antibody (abx001374) at dilution of 1/100 (40x lens).

S100A4 Antibody is a Rabbit Polyclonal antibody against S100A4. The protein encoded by this gene is a member of the S100

Abbexa Ltd, Innovation Centre, Cambridge Science Park, Cambridge, CB4 0EY, UK
Telephone: +44 (0) 1223 755950 - Fax: +44 (0) 1223 755951 - E-Mail: info@abbexa.com

family of proteins containing 2 EF-hand calcium-binding motifs. S100 proteins are localized in the cytoplasm and/or nucleus of a wide range of cells, and involved in the regulation of a number of cellular processes such as cell cycle progression and differentiation. S100 genes include at least 13 members which are located as a cluster on chromosome 1q21. This protein may function in motility, invasion, and tubulin polymerization. Chromosomal rearrangements and altered expression of this gene have been implicated in tumor metastasis. Multiple alternatively spliced variants, encoding the same protein, have been identified. [provided by RefSeq, Jul 2008].

Target: S100A4

Reactivity: Human, Mouse, Rat

Host: Rabbit

Clonality: Polyclonal

Tested Applications: WB, IHC

Recommended dilutions: WB: 1/500 - 1/2000, IHC: 1/50 - 1/200. Optimal dilutions/concentrations should be determined by the end user.

Immunogen: Recombinant protein of human S100A4.

Purification: Affinity purified.

Form: Liquid

Isotype: IgG

Conjugation: Unconjugated

Storage: Aliquot and store at -20 °C. Avoid repeated freeze/thaw cycles.

Molecular Weight: Calculated MW: 11 kDa
Observed MW: 12 kDa

Swiss Prot: [P26447](#)

GeneID: [6275](#)

Gene Symbol: S100A4

Concentration: > 1 mg/ml

Buffer: PBS, pH 7.3, 0.02% sodium azide, 50% glycerol.

Note: This product is for research use only.