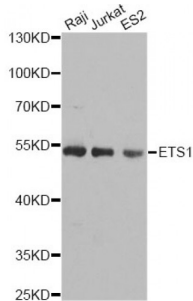


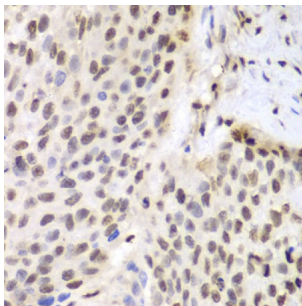
Abbexa Ltd, Innovation Centre, Cambridge Science Park, Cambridge, CB4 0EY, UK  
 Telephone: +44 (0) 1223 755950 - Fax: +44 (0) 1223 755951 - E-Mail: info@abbexa.com

# V-Ets Erythroblastosis Virus E26 Oncogene Homolog 1 (Avian) (ETS1) Antibody

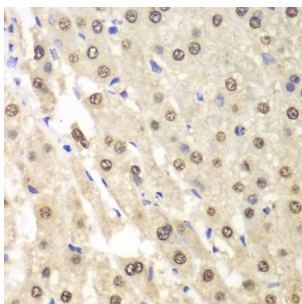
Catalogue No.: abx001344



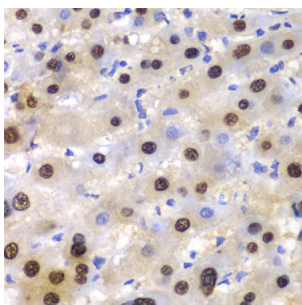
Western blot analysis of extracts of various cell lines, using ETS1 antibody (abx001344) at 1/1000 dilution.



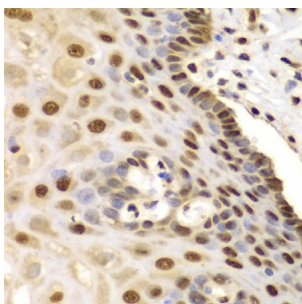
Immunohistochemistry of paraffin-embedded human lung cancer using ETS1 antibody (abx001344) at dilution of 1/100 (40x lens).



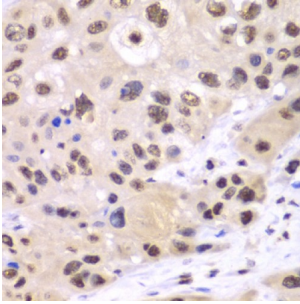
Immunohistochemistry of paraffin-embedded human liver cancer using ETS1 antibody (abx001344) at dilution of 1/100 (40x lens).



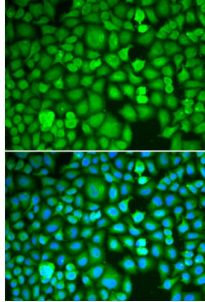
Immunohistochemistry of paraffin-embedded human liver injury using ETS1 antibody (abx001344) at dilution of 1/100 (40x lens).



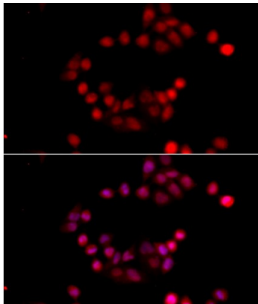
Immunohistochemistry of paraffin-embedded human esophagus using ETS1 antibody (abx001344) at dilution of 1/100 (40x lens).



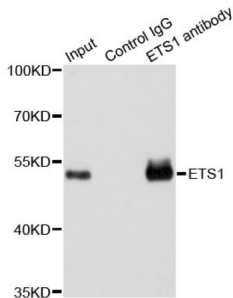
Immunohistochemistry of paraffin-embedded human esophageal cancer using ETS1 antibody (abx001344) at dilution of 1/100 (40x lens).



Immunofluorescence analysis of A549 cells using ETS1 antibody (abx001344). Blue: DAPI for nuclear staining.



Immunofluorescence analysis of HeLa cells using ETS1 antibody (abx001344) at dilution of 1/100 (40x lens). Blue: DAPI for nuclear staining.



Immunoprecipitation analysis of 200 µg extracts of Jurkat cells using 1 µg ETS1 antibody (abx001344). Western blot was performed from the immunoprecipitate using ETS1 antibody (abx001344) at a dilution of 1/1000.

ETS1 Antibody is a Rabbit Polyclonal antibody against ETS1. This gene encodes a member of the ETS family of transcription factors, which are defined by the presence of a conserved ETS DNA-binding domain that recognizes the core consensus DNA sequence GGAA/T in target genes. These proteins function either as transcriptional activators or repressors of numerous genes, and are involved in stem cell development, cell senescence and death, and tumorigenesis. Alternatively spliced transcript variants encoding different isoforms have been described for this gene.

**Target:** ETS1

**Reactivity:** Human

Abbexa Ltd, Innovation Centre, Cambridge Science Park, Cambridge, CB4 0EY, UK  
Telephone: +44 (0) 1223 755950 - Fax: +44 (0) 1223 755951 - E-Mail: [info@abbexa.com](mailto:info@abbexa.com)

<b>Host:</b>	Rabbit
<b>Clonality:</b>	Polyclonal
<b>Tested Applications:</b>	WB, IHC, IF/ICC, IP
<b>Recommended dilutions:</b>	WB: 1/500 - 1/2000, IHC: 1/50 - 1/200, IF/ICC: 1/50 - 1/100, IP: 1/50 - 1/200. Optimal dilutions/concentrations should be determined by the end user.
<b>Immunogen:</b>	Recombinant protein of human ETS1.
<b>Purification:</b>	Affinity purified.
<b>Form:</b>	Liquid
<b>Isotype:</b>	IgG
<b>Conjugation:</b>	Unconjugated
<b>Storage:</b>	Aliquot and store at -20 °C. Avoid repeated freeze/thaw cycles.
<b>Molecular Weight:</b>	Calculated MW: 25 kDa/30 kDa/40 kDa/50 kDa/55 kDa Observed MW: 51 kDa
<b>Swiss Prot:</b>	<a href="#">P14921</a>
<b>GeneID:</b>	<a href="#">2113</a>
<b>Gene Symbol:</b>	ETS1
<b>Concentration:</b>	> 1 mg/ml
<b>Buffer:</b>	PBS, pH 7.3, 0.02% sodium azide, 50% glycerol.
<b>Note:</b>	This product is for research use only.