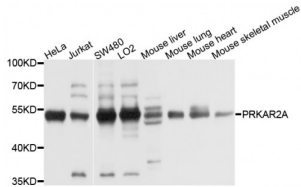


Abbexa Ltd, Innovation Centre, Cambridge Science Park, Cambridge, CB4 0EY, UK
 Telephone: +44 (0) 1223 755950 - Fax: +44 (0) 1223 755951 - E-Mail: info@abbexa.com

Protein Kinase cAMP-Dependent Type II Regulatory Subunit Alpha (PRKAR2A) Antibody

Catalogue No.: abx001289



Western blot analysis of extracts of various cell lines, using PRKAR2A antibody (abx001289) at 1/1000 dilution.

PRKAR2A Antibody is a Rabbit Polyclonal antibody against PRKAR2A. The effects of cAMP in most tissues and cell types are mainly modulated via protein kinase A, a heterotetrameric protein complex consisting of two regulatory α and two catalytic β subunits. The regulatory subunit of cAMP-dependent protein kinase (PRKAR2A) is one of the regulatory subunits and the gene is located on chromosome region 3p21.3-p21.2. The expression of PRKAR2A is tightly regulated during spermatogenesis, a significant increase in expression of this gene was also found in the human myometrium during pregnancy. This antibody got two bands about 45 kDa and 50-55 kDa in western blotting, and the 50-55kDa may be caused by phosphorylation.

Target: PRKAR2A

Reactivity: Human, Mouse, Rat

Host: Rabbit

Clonality: Polyclonal

Tested Applications: WB

Recommended dilutions: WB: 1/1000 - 1/2000. Optimal dilutions/concentrations should be determined by the end user.

Immunogen: Recombinant fusion protein of human PRKAR2A.

Purification: Affinity purified.

Form: Liquid

Isotype: IgG

Conjugation: Unconjugated

Storage: Aliquot and store at -20 °C. Avoid repeated freeze/thaw cycles.

Abbexa Ltd, Innovation Centre, Cambridge Science Park, Cambridge, CB4 0EY, UK
Telephone: +44 (0) 1223 755950 - Fax: +44 (0) 1223 755951 - E-Mail: info@abbexa.com

Molecular Weight: Calculated MW: 43 kDa/45 kDa
Observed MW: 46 kDa

Swiss Prot: [P13861](#)

GeneID: [5576](#)

Gene Symbol: PRKAR2A

Concentration: > 1 mg/ml

Buffer: PBS, pH 7.3, 0.02% sodium azide, 50% glycerol.

Note: This product is for research use only.