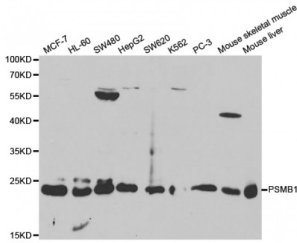


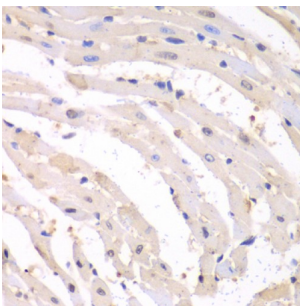
Abbexa Ltd, Innovation Centre, Cambridge Science Park, Cambridge, CB4 0EY, UK
 Telephone: +44 (0) 1223 755950 - Fax: +44 (0) 1223 755951 - E-Mail: info@abbexa.com

Proteasome Subunit Beta Type 1 (PSMB1) Antibody

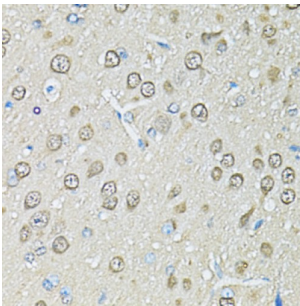
Catalogue No.: abx000971



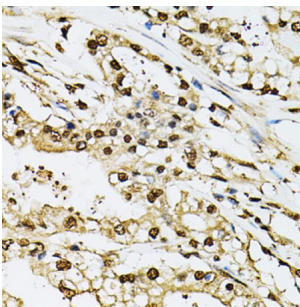
Western blot analysis of extracts of various cell lines, using PSMB1 antibody (abx000971) at 1/1000 dilution.



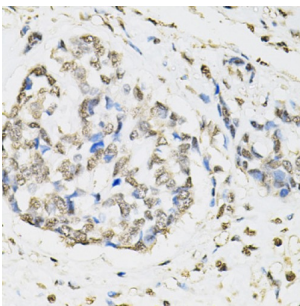
Immunohistochemistry of paraffin-embedded mouse heart using PSMB1 antibody (abx000971) at dilution of 1/100 (40x lens).



Immunohistochemistry of paraffin-embedded rat brain using PSMB1 antibody (abx000971) at dilution of 1/100 (40x lens).

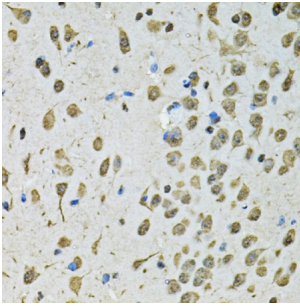


Immunohistochemistry of paraffin-embedded human prostate cancer using PSMB1 antibody (abx000971) at dilution of 1/100 (40x lens).

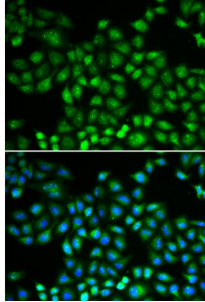


Immunohistochemistry of paraffin-embedded human esophageal cancer using PSMB1 antibody (abx000971) at dilution of 1/100 (40x lens).

Abbexa Ltd, Innovation Centre, Cambridge Science Park, Cambridge, CB4 0EY, UK
Telephone: +44 (0) 1223 755950 - Fax: +44 (0) 1223 755951 - E-Mail: info@abbexa.com



Immunohistochemistry of paraffin-embedded mouse brain using PSMB1 antibody (abx000971) at dilution of 1/100 (40x lens).



Immunofluorescence analysis of MCF-7 cells using PSMB1 antibody (abx000971). Blue: DAPI for nuclear staining.

PSMB1 Antibody is a Rabbit Polyclonal antibody against PSMB1. The proteasome is a multicatalytic proteinase complex with a highly ordered ring-shaped 20S core structure. The core structure is composed of 4 rings of 28 non-identical subunits; 2 rings are composed of 7 alpha subunits and 2 rings are composed of 7 beta subunits. Proteasomes are distributed throughout eukaryotic cells at a high concentration and cleave peptides in an ATP/ubiquitin-dependent process in a non-lysosomal pathway. An essential function of a modified proteasome, the immunoproteasome, is the processing of class I MHC peptides. This gene encodes a member of the proteasome B-type family, also known as the T1B family, that is a 20S core beta subunit. This gene is tightly linked to the TBP (TATA-binding protein) gene in human and in mouse, and is transcribed in the opposite orientation in both species.

Target: PSMB1

Reactivity: Human, Mouse, Rat

Host: Rabbit

Clonality: Polyclonal

Tested Applications: WB, IHC, IF/ICC

Recommended dilutions: WB: 1/500 - 1/2000, IHC: 1/50 - 1/200, IF/ICC: 1/50 - 1/200. Optimal dilutions/concentrations should be determined by the end user.

Immunogen: Recombinant protein of human PSMB1.

Purification: Affinity purified.

Form: Liquid

Abbexa Ltd, Innovation Centre, Cambridge Science Park, Cambridge, CB4 0EY, UK
Telephone: +44 (0) 1223 755950 - Fax: +44 (0) 1223 755951 - E-Mail: info@abbexa.com

Isotype:	IgG
Conjugation:	Unconjugated
Storage:	Aliquot and store at -20 °C. Avoid repeated freeze/thaw cycles.
Molecular Weight:	Calculated MW: 26 kDa Observed MW: 23 kDa
Swiss Prot:	P20618
GeneID:	5689
Gene Symbol:	PSMB1
Concentration:	> 1 mg/ml
Buffer:	PBS, pH 7.3, 0.02% sodium azide, 50% glycerol.
Note:	This product is for research use only.