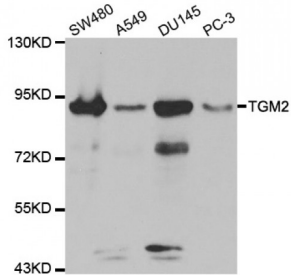


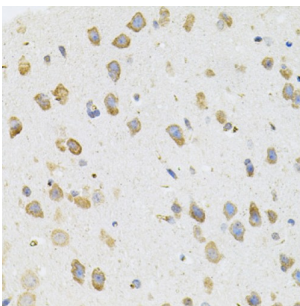
Abbexa Ltd, Innovation Centre, Cambridge Science Park, Cambridge, CB4 0EY, UK
Telephone: +44 (0) 1223 755950 - Fax: +44 (0) 1223 755951 - E-Mail: info@abbexa.com

Transglutaminase 2, Tissue (TGM2) Antibody

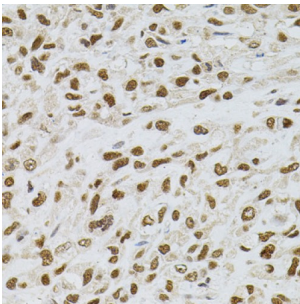
Catalogue No.: abx000934



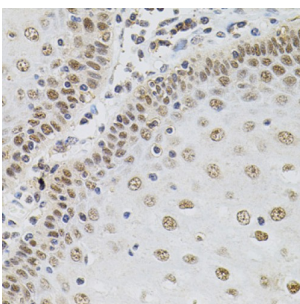
Western blot analysis of extracts of various cell lines, using TGM2 antibody (abx000934) at 1:300 dilution.



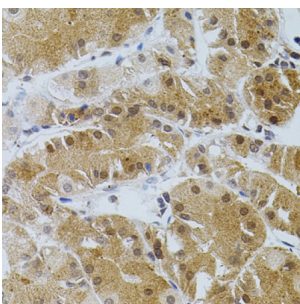
Immunohistochemistry of paraffin-embedded mouse brain using TGM2 antibody (abx000934) (40x lens).



Immunohistochemistry of paraffin-embedded human lung cancer using TGM2 antibody (abx000934) (40x lens).



Immunohistochemistry of paraffin-embedded human esophagus using TGM2 antibody (abx000934) (40x lens).



Immunohistochemistry of paraffin-embedded human stomach using TGM2 antibody (abx000934) (40x lens).

TGM2 Antibody is a Rabbit Polyclonal antibody against TGM2. Transglutaminases are enzymes that catalyze the crosslinking of

Abbexa Ltd, Innovation Centre, Cambridge Science Park, Cambridge, CB4 0EY, UK
Telephone: +44 (0) 1223 755950 - Fax: +44 (0) 1223 755951 - E-Mail: info@abbexa.com

proteins by epsilon-gamma glutamyl lysine isopeptide bonds. While the primary structure of transglutaminases is not conserved, they all have the same amino acid sequence at their active sites and their activity is calcium-dependent. The protein encoded by this gene acts as a monomer, is induced by retinoic acid, and appears to be involved in apoptosis. Finally, the encoded protein is the autoantigen implicated in celiac disease. Two transcript variants encoding different isoforms have been found for this gene.

Target:	TGM2
Reactivity:	Human, Mouse
Host:	Rabbit
Clonality:	Polyclonal
Tested Applications:	WB, IHC
Recommended dilutions:	WB: 1/500 - 1/2000, IHC: 1/100 - 1/200. Optimal dilutions/concentrations should be determined by the end user.
Immunogen:	Recombinant protein of human TGM2.
Purification:	Affinity purified.
Form:	Liquid
Isotype:	IgG
Conjugation:	Unconjugated
Storage:	Aliquot and store at -20 °C. Avoid repeated freeze/thaw cycles.
Molecular Weight:	Calculated MW: 38 kDa/61 kDa/77 kDa Observed MW: 90 kDa
Swiss Prot:	P21980
GeneID:	7052
Gene Symbol:	TGM2
Concentration:	> 1 mg/ml
Buffer:	PBS, pH 7.3, 0.02% sodium azide, 50% glycerol.
Note:	This product is for research use only.