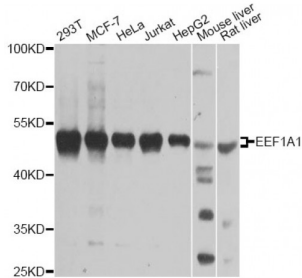
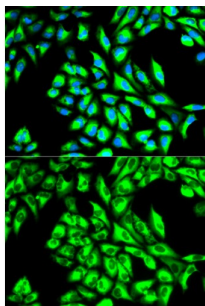


## Eukaryotic Translation Elongation Factor 1 Alpha 1 (EEF1A1) Antibody

Catalogue No.: abx000927



Western blot analysis of extracts of various cell lines, using EEF1A1 antibody (abx000927) at 1/1000 dilution.



Immunofluorescence analysis of HeLa cells using EEF1A1 antibody (abx000927). Blue: DAPI for nuclear staining.

EEF1A1 Antibody is a Rabbit Polyclonal antibody against EEF1A1. This gene encodes an isoform of the alpha subunit of the elongation factor-1 complex, which is responsible for the enzymatic delivery of aminoacyl tRNAs to the ribosome. This isoform (alpha 1) is expressed in brain, placenta, lung, liver, kidney, and pancreas, and the other isoform (alpha 2) is expressed in brain, heart and skeletal muscle. This isoform is identified as an autoantigen in 66% of patients with Felty syndrome. This gene has been found to have multiple copies on many chromosomes, some of which, if not all, represent different pseudogenes.

**Target:** EEF1A1

**Reactivity:** Human, Mouse, Rat

**Host:** Rabbit

**Clonality:** Polyclonal

**Tested Applications:** WB, IF/ICC

**Recommended dilutions:** WB: 1/500 - 1/2000, IF/ICC: 1/20 - 1/100. Optimal dilutions/concentrations should be determined by the end user.

**Immunogen:** Recombinant protein of human EEF1A1.

**Purification:** Affinity purified.

**Form:** Liquid

Abbexa Ltd, Innovation Centre, Cambridge Science Park, Cambridge, CB4 0EY, UK  
Telephone: +44 (0) 1223 755950 - Fax: +44 (0) 1223 755951 - E-Mail: [info@abbexa.com](mailto:info@abbexa.com)

<b>Isotype:</b>	IgG
<b>Conjugation:</b>	Unconjugated
<b>Storage:</b>	Aliquot and store at -20 °C. Avoid repeated freeze/thaw cycles.
<b>Molecular Weight:</b>	Calculated MW: 47 kDa/50 kDa Observed MW: 50 kDa
<b>Swiss Prot:</b>	<a href="#">P68104</a>
<b>GeneID:</b>	<a href="#">1915</a>
<b>Gene Symbol:</b>	EEF1A1
<b>Concentration:</b>	> 1 mg/ml
<b>Buffer:</b>	PBS, pH 7.3, 0.02% sodium azide, 50% glycerol.
<b>Note:</b>	This product is for research use only.