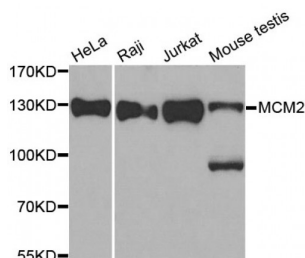


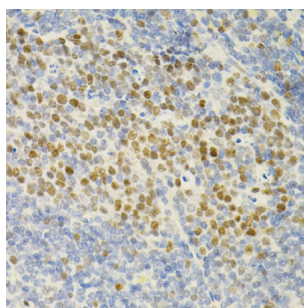
Abbexa Ltd, Innovation Centre, Cambridge Science Park, Cambridge, CB4 0EY, UK
 Telephone: +44 (0) 1223 755950 - Fax: +44 (0) 1223 755951 - E-Mail: info@abbexa.com

Minichromosome Maintenance Complex Component 2 (MCM2) Antibody

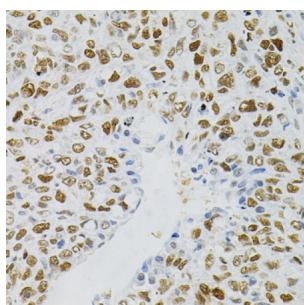
Catalogue No.: abx000733



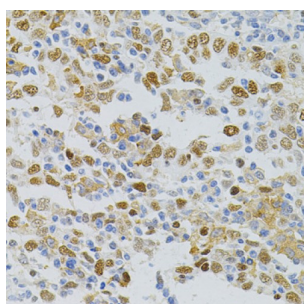
Western blot analysis of extracts of various cell lines, using MCM2 antibody (abx000733) at 1/500 dilution.



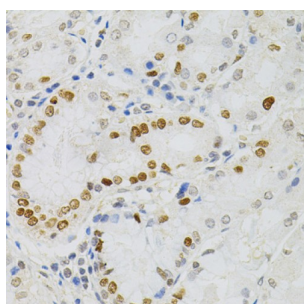
Immunohistochemistry of paraffin-embedded mouse spleen using MCM2 antibody (abx000733) (40x lens).



Immunohistochemistry of paraffin-embedded human lung cancer using MCM2 antibody (abx000733) (40x lens).



Immunohistochemistry of paraffin-embedded human esophageal cancer using MCM2 antibody (abx000733) (40x lens).



Immunohistochemistry of paraffin-embedded human stomach using MCM2 antibody (abx000733) (40x lens).

Abbexa Ltd, Innovation Centre, Cambridge Science Park, Cambridge, CB4 0EY, UK
Telephone: +44 (0) 1223 755950 - Fax: +44 (0) 1223 755951 - E-Mail: info@abbexa.com

MCM2 Antibody is a Rabbit Polyclonal antibody against MCM2. The MCM2-7 complex forms the core of the replicative helicase which acts as the molecular motor that uses ATP binding and hydrolysis to fuel the unwinding of double-stranded DNA at the replication fork in eukaryotes. This complex is the putative replicative helicase essential for 'once per cell cycle' DNA replication initiation and elongation in eukaryotic cells. MCM2, also named CDCL1 and BM28, is a human nuclear protein that plays an important role in 2 crucial steps of the cell cycle, namely, onset of DNA replication and cell division.

Target:	MCM2
Reactivity:	Human, Mouse
Host:	Rabbit
Clonality:	Polyclonal
Tested Applications:	WB, IHC
Recommended dilutions:	WB: 1/500 - 1/2000, IHC: 1/50 - 1/200. Optimal dilutions/concentrations should be determined by the end user.
Immunogen:	Recombinant protein of human MCM2.
Purification:	Affinity purified.
Form:	Liquid
Isotype:	IgG
Conjugation:	Unconjugated
Storage:	Aliquot and store at -20 °C. Avoid repeated freeze/thaw cycles.
Molecular Weight:	Calculated MW: 101 kDa Observed MW: 120 kDa
Swiss Prot:	P49736
GeneID:	4171
Gene Symbol:	MCM2
Concentration:	> 1 mg/ml
Buffer:	PBS, pH 7.3, 0.02% sodium azide, 50% glycerol.
Note:	This product is for research use only.