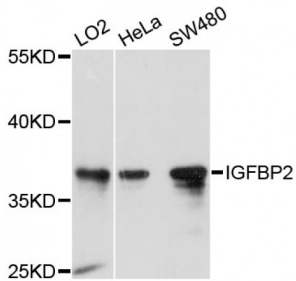


## Insulin-Like Growth Factor-Binding Protein 2 (IGFBP2) Antibody

Catalogue No.: abx000709



Western blot analysis of extracts of various cell lines, using IGFBP2 antibody (abx000709) at 1/1000 dilution.

Insulin Like Growth Factor Binding Protein 2 (IGFBP2) Antibody is a Rabbit Polyclonal antibody against Insulin Like Growth Factor Binding Protein 2 (IGFBP2). Insulin-like growth factors (IGFs) and their binding proteins (IGFBPs) have important metabolic roles in the human body. IGFBP-2 is a 34 kD IGFBP protein with degraded fragments of 24 kD, 19kd and 15kd. The levels of Insulin Like Growth Factor Binding Protein 2 (IGFBP2) are elevated during progression of many human cancers. Insulin Like Growth Factor Binding Protein 2 (IGFBP2) is expressed in invasive PAc, whereas its expression in HG-PIN is low. It can be as an Immunohistochemical Marker for Prostatic Adenocarcinoma.

**Target:** Insulin Like Growth Factor Binding Protein 2 (IGFBP2)

**Reactivity:** Human, Mouse, Rat

**Host:** Rabbit

**Clonality:** Polyclonal

**Tested Applications:** WB

**Recommended dilutions:** WB: 1/500 - 1/2000. Optimal dilutions/concentrations should be determined by the end user.

**Immunogen:** Recombinant protein of human IGFBP2.

**Purification:** Affinity purified.

**Form:** Liquid

**Isotype:** IgG

**Conjugation:** Unconjugated

**Storage:** Aliquot and store at -20 °C. Avoid repeated freeze/thaw cycles.

**Molecular Weight:** Calculated MW: 34 kDa  
Observed MW: 37 kDa

Abbexa Ltd, Innovation Centre, Cambridge Science Park, Cambridge, CB4 0EY, UK  
Telephone: +44 (0) 1223 755950 - Fax: +44 (0) 1223 755951 - E-Mail: info@abbexa.com

**Swiss Prot:** [P18065](#)

**GeneID:** [3485](#)

**Gene Symbol:** IGFBP2

**Concentration:** > 1 mg/ml

**Buffer:** PBS, pH 7.3, 0.02% sodium azide, 50% glycerol.

**Note:** This product is for research use only.