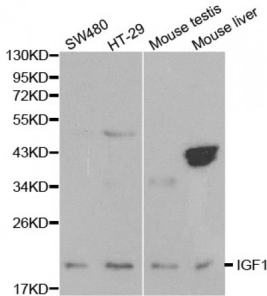
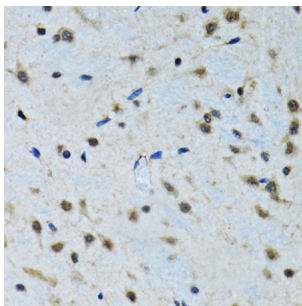


## Insulin-Like Growth Factor I (IGF1) Antibody

Catalogue No.: abx000680



Western blot analysis of extracts of various cell lines, using IGF1 antibody (abx000680) at 1/1000 dilution.



Immunohistochemistry of paraffin-embedded rat brain using IGF1 antibody (abx000680) at dilution of 1/100 (40x lens).

Insulin Like Growth Factor 1 (IGF1) Antibody is a Rabbit Polyclonal antibody against Insulin Like Growth Factor 1 (IGF1). Insulin Like Growth Factor 1 (IGF1), also named as IBP1, MGF, IGF-IA and Somatomedin-C, belongs to the insulin family. Insulin Like Growth Factor 1 (IGF1) is structurally and functionally related to insulin but have a much higher growth-promoting activity. Altered expression or mutation of Insulin Like Growth Factor 1 (IGF1) is associated with several human disorders, including type I diabetes and various forms of cancer. Defects in Insulin Like Growth Factor 1 (IGF1) are the cause of insulin-like growth factor I deficiency (Insulin Like Growth Factor 1 (IGF1) deficiency) which is an autosomal recessive disorder characterized by growth retardation, sensorineural deafness and mental retardation. The antibody is specific to isoform Insulin Like Growth Factor 1 (IGF1)A.

**Target:** Insulin Like Growth Factor 1 (IGF1)

**Reactivity:** Human, Mouse, Rat

**Host:** Rabbit

**Clonality:** Polyclonal

**Tested Applications:** WB, IHC

**Recommended dilutions:** WB: 1/500 - 1/2000, IHC: 1/50 - 1/200. Optimal dilutions/concentrations should be determined by the end user.

**Immunogen:** A synthetic peptide of human IGF1.

Abbexa Ltd, Innovation Centre, Cambridge Science Park, Cambridge, CB4 0EY, UK  
Telephone: +44 (0) 1223 755950 - Fax: +44 (0) 1223 755951 - E-Mail: [info@abbexa.com](mailto:info@abbexa.com)

<b>Purification:</b>	Affinity purified.
<b>Form:</b>	Liquid
<b>Isotype:</b>	IgG
<b>Conjugation:</b>	Unconjugated
<b>Storage:</b>	Aliquot and store at -20 °C. Avoid repeated freeze/thaw cycles.
<b>Molecular Weight:</b>	Calculated MW: 15 kDa/17 kDa/21 kDa Observed MW: 43 kDa
<b>Swiss Prot:</b>	<a href="#">P05019</a>
<b>GeneID:</b>	<a href="#">3479</a>
<b>Gene Symbol:</b>	IGF1
<b>Concentration:</b>	> 1 mg/ml
<b>Buffer:</b>	PBS, pH 7.3, 0.02% sodium azide, 50% glycerol.
<b>Note:</b>	This product is for research use only.