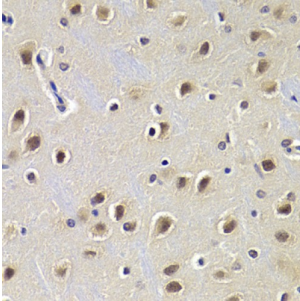
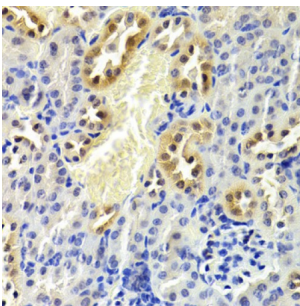


Cyclin Dependent Kinase Inhibitor 1B (CDKN1B) Antibody

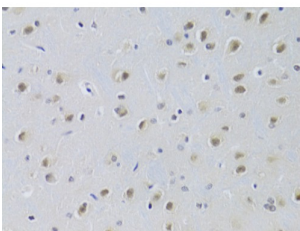
Catalogue No.: abx000672



Immunohistochemistry of paraffin-embedded rat brain using CDKN1B Antibody (abx000672) at dilution of 1/200 (40x lens).



Immunohistochemistry of paraffin-embedded mouse kidney using CDKN1B Antibody (abx000672) at dilution of 1/200 (40x lens).



Immunohistochemistry of paraffin-embedded rat brain using CDKN1B Antibody (abx000672) at dilution of 1/100 (40x lens).

CDKN1B Antibody is a Rabbit Polyclonal antibody against CDKN1B. This gene encodes a cyclin-dependent kinase inhibitor, which shares a limited similarity with CDK inhibitor CDKN1A/p21. The encoded protein binds to and prevents the activation of cyclin E-CDK2 or cyclin D-CDK4 complexes, and thus controls the cell cycle progression at G1. The degradation of this protein, which is triggered by its CDK dependent phosphorylation and subsequent ubiquitination by SCF complexes, is required for the cellular transition from quiescence to the proliferative state. Mutations in this gene are associated with multiple endocrine neoplasia type IV (MEN4).

Target:	CDKN1B
Reactivity:	Human, Mouse, Rat
Host:	Rabbit
Clonality:	Polyclonal
Tested Applications:	IHC, IF/ICC

Abbexa Ltd, Innovation Centre, Cambridge Science Park, Cambridge, CB4 0EY, UK
Telephone: +44 (0) 1223 755950 - Fax: +44 (0) 1223 755951 - E-Mail: info@abbexa.com

Recommended dilutions: IHC: 1/50 - 1/200, IF/ICC: 1/20 - 1/50. Optimal dilutions/concentrations should be determined by the end user.

Immunogen: Recombinant fusion protein of human CDKN1B.

Purification: Affinity purified.

Form: Liquid

Isotype: IgG

Conjugation: Unconjugated

Storage: Aliquot and store at -20 °C. Avoid repeated freeze/thaw cycles.

Molecular Weight: Calculated MW: 22 kDa

Swiss Prot: [P46527](#)

GeneID: [1027](#)

Gene Symbol: CDKN1B

Concentration: > 1 mg/ml

Buffer: PBS, pH 7.3, 0.02% sodium azide, 50% glycerol.

Note: This product is for research use only.