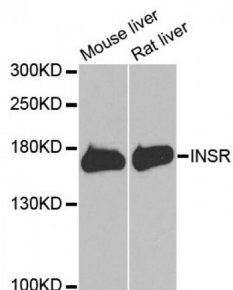


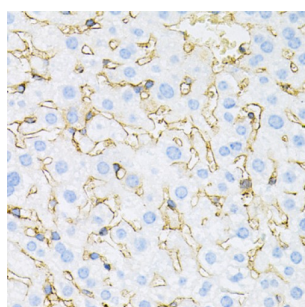
Abbexa Ltd, Innovation Centre, Cambridge Science Park, Cambridge, CB4 0EY, UK  
Telephone: +44 (0) 1223 755950 - Fax: +44 (0) 1223 755951 - E-Mail: info@abbexa.com

## Insulin Receptor (INSR) Antibody

Catalogue No.: abx000670



Western blot analysis of extracts of various cell lines, using INSR antibody (abx000670) at 1/1000 dilution.



Immunohistochemistry of paraffin-embedded mouse liver using INSR antibody (abx000670) at dilution of 1/100 (40x lens).

INSR Antibody is a Rabbit Polyclonal antibody against INSR. After removal of the precursor signal peptide, the insulin receptor precursor is post-translationally cleaved into two chains (alpha and beta) that are covalently linked. Binding of insulin to the insulin receptor (INSR) stimulates glucose uptake. Two transcript variants encoding different isoforms have been found for this gene.

**Target:** INSR

**Reactivity:** Mouse, Rat

**Host:** Rabbit

**Clonality:** Polyclonal

**Tested Applications:** WB, IHC

**Recommended dilutions:** WB: 1/500 - 1/2000, IHC: 1/50 - 1/100. Optimal dilutions/concentrations should be determined by the end user.

**Immunogen:** Recombinant protein of human INSR.

**Purification:** Affinity purified.

**Form:** Liquid

Abbexa Ltd, Innovation Centre, Cambridge Science Park, Cambridge, CB4 0EY, UK  
Telephone: +44 (0) 1223 755950 - Fax: +44 (0) 1223 755951 - E-Mail: info@abbexa.com

<b>Isotype:</b>	IgG
<b>Conjugation:</b>	Unconjugated
<b>Storage:</b>	Aliquot and store at -20 °C. Avoid repeated freeze/thaw cycles.
<b>Molecular Weight:</b>	Calculated MW: 155 kDa/156 kDa Observed MW: 160 kDa
<b>Swiss Prot:</b>	<a href="#">P06213</a>
<b>GeneID:</b>	<a href="#">3643</a>
<b>Gene Symbol:</b>	INSR
<b>Concentration:</b>	> 1 mg/ml
<b>Buffer:</b>	PBS, pH 7.3, 0.02% sodium azide, 50% glycerol.
<b>Note:</b>	This product is for research use only.