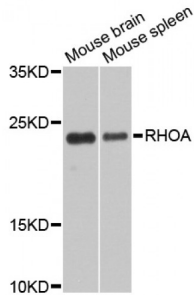


Ras Homolog Gene Family, Member A (RHOA) Antibody

Catalogue No.: abx000657



Western blot analysis of extracts of various cell lines, using RhoA antibody (abx000657) at 1/1000 dilution.

RhoA Antibody is a Rabbit Polyclonal antibody against RhoA. RHOA (ras homolog family member A) is a protein-coding gene. GO annotations related to this gene include GTP binding and protein domain specific binding. An important paralog of this gene is RHOB.

Target: RhoA

Reactivity: Human, Mouse, Rat

Host: Rabbit

Clonality: Polyclonal

Tested Applications: WB

Recommended dilutions: WB: 1/500 - 1/2000. Optimal dilutions/concentrations should be determined by the end user.

Immunogen: Recombinant protein. Center-peptide of human RhoA.

Purification: Affinity purified.

Form: Liquid

Isotype: IgG

Conjugation: Unconjugated

Storage: Aliquot and store at -20 °C. Avoid repeated freeze/thaw cycles.

Molecular Weight: Calculated MW: 21 kDa
Observed MW: 22 kDa

Swiss Prot: [P61586](#)

Abbexa Ltd, Innovation Centre, Cambridge Science Park, Cambridge, CB4 0EY, UK
Telephone: +44 (0) 1223 755950 - Fax: +44 (0) 1223 755951 - E-Mail: info@abbexa.com

GeneID: [387](#)

Gene Symbol: RHOA

Concentration: > 1 mg/ml

Buffer: PBS, pH 7.3, 0.02% sodium azide, 50% glycerol.

Note: This product is for research use only.