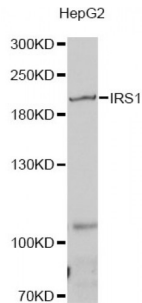


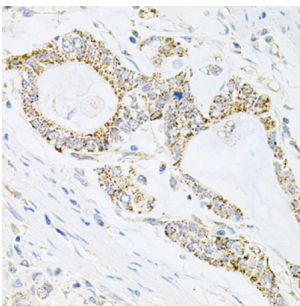
Abbexa Ltd, Innovation Centre, Cambridge Science Park, Cambridge, CB4 0EY, UK
Telephone: +44 (0) 1223 755950 - Fax: +44 (0) 1223 755951 - E-Mail: info@abbexa.com

Insulin Receptor Substrate 1 (IRS1) Antibody

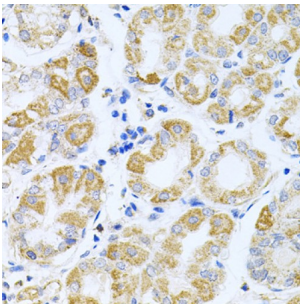
Catalogue No.: abx000630



Western blot analysis of extracts of HepG2 cells, using IRS1 antibody (abx000630) at 1/1000 dilution.



Immunohistochemistry of paraffin-embedded human gastric cancer using IRS1 antibody (abx000630) at dilution of 1/100 (40x lens).



Immunohistochemistry of paraffin-embedded human stomach using IRS1 antibody (abx000630) at dilution of 1/100 (40x lens).

IRS1 Antibody is a Rabbit Polyclonal antibody against IRS1. This gene encodes a protein which is phosphorylated by insulin receptor tyrosine kinase. Mutations in this gene are associated with type II diabetes and susceptibility to insulin resistance.

Target:	IRS1
Reactivity:	Human, Mouse
Host:	Rabbit
Clonality:	Polyclonal
Tested Applications:	WB, IHC

Recommended dilutions: WB: 1/500 - 1/1000, IHC: 1/50 - 1/100. Optimal dilutions/concentrations should be determined by the end user.

Abbexa Ltd, Innovation Centre, Cambridge Science Park, Cambridge, CB4 0EY, UK
Telephone: +44 (0) 1223 755950 - Fax: +44 (0) 1223 755951 - E-Mail: info@abbexa.com

Immunogen:	Recombinant protein of human IRS1.
Purification:	Affinity purified.
Form:	Liquid
Isotype:	IgG
Conjugation:	Unconjugated
Storage:	Aliquot and store at -20 °C. Avoid repeated freeze/thaw cycles.
Molecular Weight:	Calculated MW: 131 kDa Observed MW: 210 kDa
Swiss Prot:	P35568
GeneID:	3667
Gene Symbol:	IRS1
Concentration:	> 1 mg/ml
Buffer:	PBS, pH 7.3, 0.02% sodium azide, 50% glycerol.
Note:	This product is for research use only.