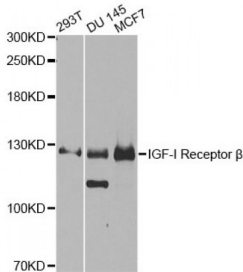
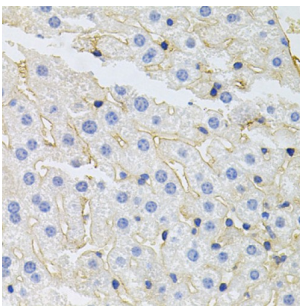


Insulin Like Growth Factor 1 Receptor (IGF1R) Antibody

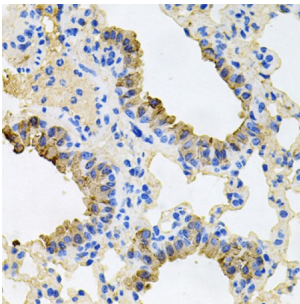
Catalogue No.: abx000628



Western blot analysis of extracts of various cell lines, using IGF1R antibody (abx000628) at 1/1000 dilution.



Immunohistochemistry of paraffin-embedded mouse liver using IGF1R antibody (abx000628) at dilution of 1/100 (40x lens).



Immunohistochemistry of paraffin-embedded mouse lung using IGF1R antibody (abx000628) at dilution of 1/100 (40x lens).

Insulin Like Growth Factor 1 Receptor (IGF1R) Antibody is a Rabbit Polyclonal antibody against Insulin Like Growth Factor 1 Receptor (IGF1R). Insulin Like Growth Factor 1 Receptor (IGF1R), also named as CD221, belongs to the protein kinase superfamily, Tyr protein kinase family and Insulin receptor subfamily. Insulin Like Growth Factor 1 Receptor (IGF1R) binds insulin-like growth factor 1 (IGF1) with a high affinity and IGF2 with a lower affinity. It has a tyrosine-protein kinase activity, which is necessary for the activation of the IGF1-stimulated downstream signaling cascade. When present in a hybrid receptor with INSR, Insulin Like Growth Factor 1 Receptor (IGF1R) binds IGF1. The hybrid receptors composed of Insulin Like Growth Factor 1 Receptor (IGF1R) and INSR isoform Long are activated with a high affinity by IGF1, with low affinity by IGF2 and not significantly activated by insulin, and that hybrid receptors composed of Insulin Like Growth Factor 1 Receptor (IGF1R) and INSR isoform Short are activated by IGF1, IGF2 and insulin. In contrast, the hybrid receptors composed of Insulin Like Growth Factor 1 Receptor (IGF1R) and INSR isoform Long and hybrid receptors composed of Insulin Like Growth Factor 1 Receptor (IGF1R) and INSR isoform Short have similar binding characteristics, both bind IGF1 and have a low affinity for insulin. Defects in Insulin Like Growth Factor 1 Receptor (IGF1R) may be a cause in some cases of resistance to insulin-like growth factor 1 (IGF1 resistance). The antibody is specific to Insulin Like Growth Factor 1 Receptor (IGF1R).

Target: Insulin Like Growth Factor 1 Receptor (IGF1R)

Abbexa Ltd, Innovation Centre, Cambridge Science Park, Cambridge, CB4 0EY, UK
Telephone: +44 (0) 1223 755950 - Fax: +44 (0) 1223 755951 - E-Mail: info@abbexa.com

Reactivity: Human, Mouse

Host: Rabbit

Clonality: Polyclonal

Tested Applications: WB, IHC

Recommended dilutions: WB: 1/500 - 1/2000, IHC: 1/50 - 1/200. Optimal dilutions/concentrations should be determined by the end user.

Immunogen: Synthetic peptide. N term -peptide of human IGF1R.

Purification: Affinity purified.

Form: Liquid

Isotype: IgG

Conjugation: Unconjugated

Storage: Aliquot and store at -20 °C. Avoid repeated freeze/thaw cycles.

Molecular Weight: Calculated MW: 154 kDa
Observed MW: 127 kDa

Swiss Prot: [P08069](#)

GeneID: [3480](#)

Gene Symbol: IGF1R

Concentration: > 1 mg/ml

Buffer: PBS, pH 7.3, 0.02% sodium azide, 50% glycerol.

Note: This product is for research use only.