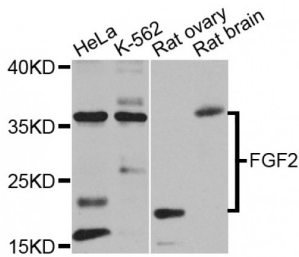


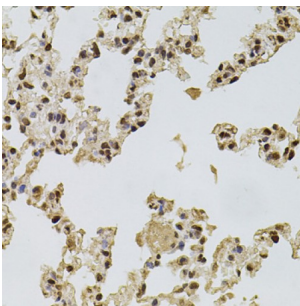
Abbexa Ltd, Innovation Centre, Cambridge Science Park, Cambridge, CB4 0EY, UK
 Telephone: +44 (0) 1223 755950 - Fax: +44 (0) 1223 755951 - E-Mail: info@abbexa.com

Fibroblast Growth Factor 2 (FGF2) Antibody

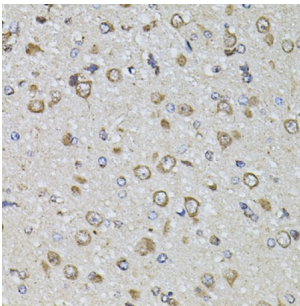
Catalogue No.: abx000620



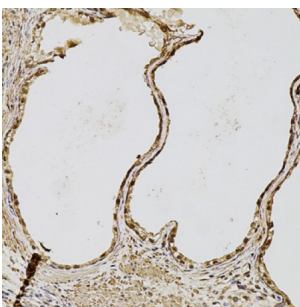
Western blot analysis of extracts of various cell lines, using FGF2 antibody (abx000620) at 1/1000 dilution.



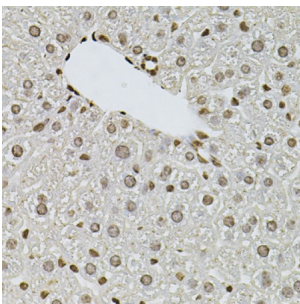
Immunohistochemistry of paraffin-embedded rat lung using FGF2 antibody (abx000620) at dilution of 1/100 (40x lens).



Immunohistochemistry of paraffin-embedded rat brain using FGF2 antibody (abx000620) at dilution of 1/100 (40x lens).

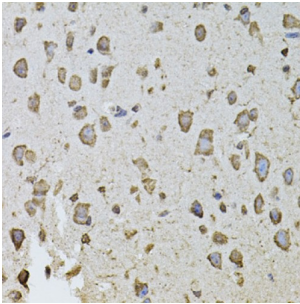


Immunohistochemistry of paraffin-embedded human prostate using FGF2 antibody (abx000620) at dilution of 1/100 (20x lens).

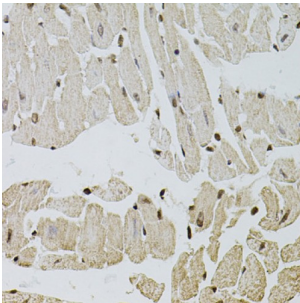


Immunohistochemistry of paraffin-embedded mouse liver using FGF2 antibody (abx000620) at dilution of 1/100 (40x lens).

Abbexa Ltd, Innovation Centre, Cambridge Science Park, Cambridge, CB4 0EY, UK
Telephone: +44 (0) 1223 755950 - Fax: +44 (0) 1223 755951 - E-Mail: info@abbexa.com



Immunohistochemistry of paraffin-embedded mouse brain using FGF2 antibody (abx000620) at dilution of 1/100 (40x lens).



Immunohistochemistry of paraffin-embedded mouse heart using FGF2 antibody (abx000620) at dilution of 1/100 (40x lens).

FGF2 Antibody is a Rabbit Polyclonal antibody against FGF2. The protein encoded by this gene is a member of the fibroblast growth factor (FGF) family. FGF family members bind heparin and possess broad mitogenic and angiogenic activities. This protein has been implicated in diverse biological processes, such as limb and nervous system development, wound healing, and tumor growth. The mRNA for this gene contains multiple polyadenylation sites, and is alternatively translated from non-AUG (CUG) and AUG initiation codons, resulting in five different isoforms with distinct properties. The CUG-initiated isoforms are localized in the nucleus and are responsible for the intracrine effect, whereas, the AUG-initiated form is mostly cytosolic and is responsible for the paracrine and autocrine effects of this FGF.

Target: FGF2

Reactivity: Human, Mouse, Rat

Host: Rabbit

Clonality: Polyclonal

Tested Applications: WB, IHC

Recommended dilutions: WB: 1/500 - 1/2000, IHC: 1/50 - 1/200. Optimal dilutions/concentrations should be determined by the end user.

Immunogen: Synthetic peptide. N term -peptide of human FGF2.

Purification: Affinity purified.

Form: Liquid

Abbexa Ltd, Innovation Centre, Cambridge Science Park, Cambridge, CB4 0EY, UK
Telephone: +44 (0) 1223 755950 - Fax: +44 (0) 1223 755951 - E-Mail: info@abbexa.com

Isotype:	IgG
Conjugation:	Unconjugated
Storage:	Aliquot and store at -20 °C. Avoid repeated freeze/thaw cycles.
Molecular Weight:	Calculated MW: 17 kDa/21 kDa/22 kDa/30 kDa Observed MW: 20 kDa,36 kDa
Swiss Prot:	P09038
GeneID:	2247
Gene Symbol:	FGF2
Concentration:	> 1 mg/ml
Buffer:	PBS, pH 7.3, 0.02% sodium azide, 50% glycerol.
Note:	This product is for research use only.