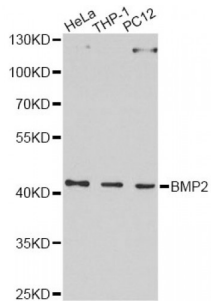


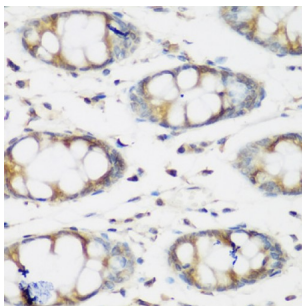
Abbexa Ltd, Innovation Centre, Cambridge Science Park, Cambridge, CB4 0EY, UK
Telephone: +44 (0) 1223 755950 - Fax: +44 (0) 1223 755951 - E-Mail: info@abbexa.com

Bone Morphogenetic Protein 2 (BMP2) Antibody

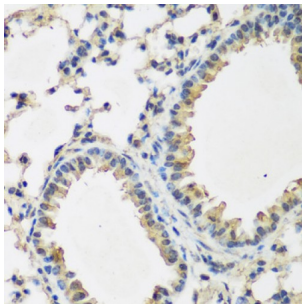
Catalogue No.: abx000616



Western blot analysis of extracts of various cell lines, using BMP2 Antibody (abx000616) at 1/1000 dilution.



Immunohistochemistry of paraffin-embedded human colon using BMP2 antibody (abx000616) at dilution of 1/200 (40x lens).



Immunohistochemistry of paraffin-embedded mouse lung using BMP2 antibody (abx000616) at dilution of 1/200 (40x lens).

BMP2 Antibody is a Rabbit Polyclonal antibody against BMP2. The protein encoded by this gene belongs to the transforming growth factor-beta (TGFB) superfamily. The encoded protein acts as a disulfide-linked homodimer and induces bone and cartilage formation.

Target: BMP2

Reactivity: Human, Mouse, Rat

Host: Rabbit

Clonality: Polyclonal

Tested Applications: WB, IHC

Recommended dilutions: WB: 1/500 - 1/2000, IHC: 1/50 - 1/100. Optimal dilutions/concentrations should be determined by the end user.

Abbexa Ltd, Innovation Centre, Cambridge Science Park, Cambridge, CB4 0EY, UK
Telephone: +44 (0) 1223 755950 - Fax: +44 (0) 1223 755951 - E-Mail: info@abbexa.com

Immunogen:	Recombinant protein of human BMP2.
Purification:	Affinity purified.
Form:	Liquid
Isotype:	IgG
Conjugation:	Unconjugated
Storage:	Aliquot and store at -20 °C. Avoid repeated freeze/thaw cycles.
Molecular Weight:	Calculated MW: 44 kDa Observed MW: 45 kDa
Swiss Prot:	P12643
GeneID:	650
Gene Symbol:	BMP2
Concentration:	> 1 mg/ml
Buffer:	PBS, pH 7.3, 0.02% sodium azide, 50% glycerol.
Note:	This product is for research use only.