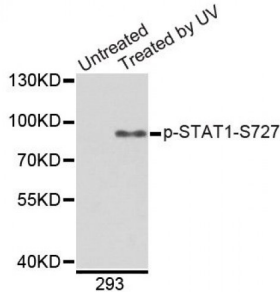


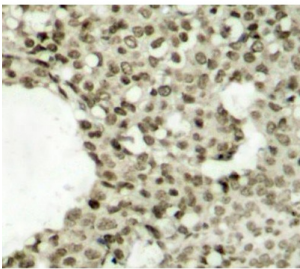
Abbexa Ltd, Innovation Centre, Cambridge Science Park, Cambridge, CB4 0EY, UK
Telephone: +44 (0) 1223 755950 - Fax: +44 (0) 1223 755951 - E-Mail: info@abbexa.com

STAT1 (pS727) Antibody

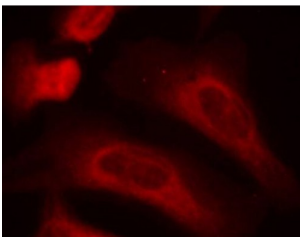
Catalogue No.: abx000500



Western blot analysis of extracts from 293 cells, using Phospho-STAT1-S727 antibody (abx000500).



Immunohistochemistry of paraffin-embedded human breast carcinoma tissue, using Phospho-STAT1-S727 antibody (abx000500).



Immunofluorescence staining of methanol-fixed HeLa cells using Phospho-STAT1-S727 antibody (abx000500).

STAT1 (pS727) Antibody is a Rabbit Polyclonal antibody against STAT1 (pS727). The protein encoded by this gene is a member of the STAT protein family. In response to cytokines and growth factors, STAT family members are phosphorylated by the receptor associated kinases, and then form homo- or heterodimers that translocate to the cell nucleus where they act as transcription activators. This protein can be activated by various ligands including interferon-alpha, interferon-gamma, EGF, PDGF and IL6. This protein mediates the expression of a variety of genes, which is thought to be important for cell viability in response to different cell stimuli and pathogens. Two alternatively spliced transcript variants encoding distinct isoforms have been described.

Target: STAT1 (pS727)

Reactivity: Human, Mouse, Rat

Host: Rabbit

Clonality: Polyclonal

Abbexa Ltd, Innovation Centre, Cambridge Science Park, Cambridge, CB4 0EY, UK
Telephone: +44 (0) 1223 755950 - Fax: +44 (0) 1223 755951 - E-Mail: info@abbexa.com

Tested Applications: WB, IHC, IF/ICC

Recommended dilutions: WB: 1/500 - 1/2000, IHC: 1/50 - 1/100, IF/ICC: 1/100 - 1/200. Optimal dilutions/concentrations should be determined by the end user.

Immunogen: Synthetic Peptide. A phospho specific peptide corresponding to residues surrounding S727 of human STAT1.

Purification: Affinity purified.

Form: Liquid

Isotype: IgG

Conjugation: Unconjugated

Storage: Aliquot and store at -20 °C. Avoid repeated freeze/thaw cycles.

Molecular Weight: Calculated MW: 83 kDa/87 kDa
Observed MW: 87 kDa

Swiss Prot: [P42224](#)

GeneID: [6772](#)

Gene Symbol: STAT1

Concentration: > 1 mg/ml

Buffer: PBS, pH 7.3, 0.02% sodium azide, 50% glycerol.

Note: This product is for research use only.