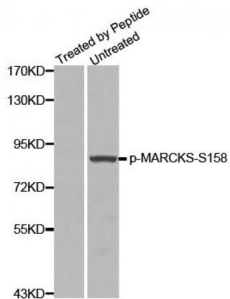
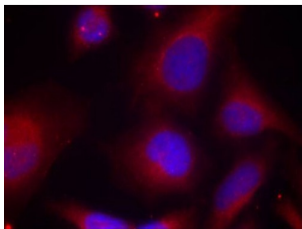


MARCKS (pS158) Antibody

Catalogue No.: abx000449



Western blot analysis of extracts from 3T3 cells using Phospho-MARCKS-S158 antibody (abx000449).



Immunofluorescence staining of methanol-fixed HeLa cells using Phospho-MARCKS-S158 antibody (abx000449).

MARCKS (pS158) Antibody is a Rabbit Polyclonal antibody against MARCKS (pS158). The protein encoded by this gene is a substrate for protein kinase C. It is localized to the plasma membrane and is an actin filament crosslinking protein. Phosphorylation by protein kinase C or binding to calcium-calmodulin inhibits its association with actin and with the plasma membrane, leading to its presence in the cytoplasm. The protein is thought to be involved in cell motility, phagocytosis, membrane trafficking and mitogenesis.

Target: MARCKS (pS158)

Reactivity: Human, Mouse, Rat

Host: Rabbit

Clonality: Polyclonal

Tested Applications: WB, IF/ICC

Recommended dilutions: WB: 1/500 - 1/2000, IF/ICC: 1/100 - 1/200. Optimal dilutions/concentrations should be determined by the end user.

Immunogen: Synthetic Peptide. A phospho specific peptide corresponding to residues surrounding S158 of human MARCKS.

Purification: Affinity purified.

Form: Liquid

Abbexa Ltd, Innovation Centre, Cambridge Science Park, Cambridge, CB4 0EY, UK
Telephone: +44 (0) 1223 755950 - Fax: +44 (0) 1223 755951 - E-Mail: info@abbexa.com

Isotype:	IgG
Conjugation:	Unconjugated
Storage:	Aliquot and store at -20 °C. Avoid repeated freeze/thaw cycles.
Molecular Weight:	Calculated MW: 31 kDa Observed MW: 85 kDa
Swiss Prot:	P29966
GeneID:	4082
Gene Symbol:	MARCKS
Concentration:	> 1 mg/ml
Buffer:	PBS, pH 7.3, 0.02% sodium azide, 50% glycerol.
Note:	This product is for research use only.