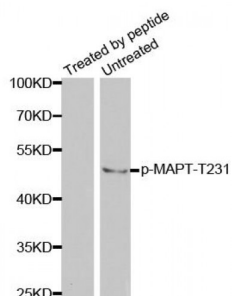


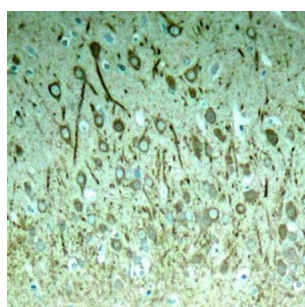
Abbexa Ltd, Innovation Centre, Cambridge Science Park, Cambridge, CB4 0EY, UK
 Telephone: +44 (0) 1223 755950 - Fax: +44 (0) 1223 755951 - E-Mail: info@abbexa.com

MAPT (pT231) Antibody

Catalogue No.: abx000448



Western blot analysis of extracts from mouse brain tissue using Phospho-MAPT-T231 antibody (abx000448).



Immunohistochemistry of paraffin-embedded rat hippocampal region tissue from a model with Alzheimer using Phospho-MAPT-T231 antibody (abx000448).

MAPT (pT231) Antibody is a Rabbit Polyclonal antibody against MAPT (pT231). This gene encodes the microtubule-associated protein tau (MAPT) whose transcript undergoes complex, regulated alternative splicing, giving rise to several mRNA species. MAPT transcripts are differentially expressed in the nervous system, depending on stage of neuronal maturation and neuron type. MAPT gene mutations have been associated with several neurodegenerative disorders such as Alzheimer's disease, Pick's disease, frontotemporal dementia, cortico-basal degeneration and progressive supranuclear palsy.

Target: MAPT (pT231)

Reactivity: Human, Mouse, Rat

Host: Rabbit

Clonality: Polyclonal

Tested Applications: WB, IHC

Recommended dilutions: WB: 1/500 - 1/2000, IHC: 1/50 - 1/100. Optimal dilutions/concentrations should be determined by the end user.

Immunogen: Synthetic Peptide. A phospho specific peptide corresponding to residues surrounding T231 of human MAPT.

Purification: Affinity purified.

Form: Liquid

Abbexa Ltd, Innovation Centre, Cambridge Science Park, Cambridge, CB4 0EY, UK
Telephone: +44 (0) 1223 755950 - Fax: +44 (0) 1223 755951 - E-Mail: info@abbexa.com

Isotype:	IgG
Conjugation:	Unconjugated
Storage:	Aliquot and store at -20 °C. Avoid repeated freeze/thaw cycles.
Molecular Weight:	Calculated MW: 32-45 kDa/78- 80 kDa Observed MW: 50 kDa
Swiss Prot:	P10636
GeneID:	4137
Gene Symbol:	MAPT
Concentration:	> 1 mg/ml
Buffer:	PBS, pH 7.3, 0.02% sodium azide, 50% glycerol.
Note:	This product is for research use only.