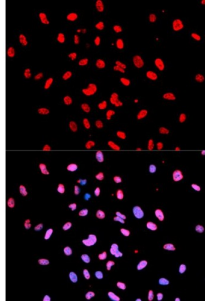


Abbexa Ltd, Innovation Centre, Cambridge Science Park, Cambridge, CB4 0EY, UK
Telephone: +44 (0) 1223 755950 - Fax: +44 (0) 1223 755951 - E-Mail: info@abbexa.com

Btk (pY223) Antibody

Catalogue No.: abx000168



Immunofluorescence analysis of U2OS cells using Phospho-Btk-Y223 antibody (abx000168).
Blue: DAPI for nuclear staining.

Btk (pY223) Antibody is a Rabbit Polyclonal antibody against Btk (pY223). The protein encoded by this gene plays a crucial role in B-cell development. Mutations in this gene cause X-linked agammaglobulinemia type 1, which is an immunodeficiency characterized by the failure to produce mature B lymphocytes, and associated with a failure of Ig heavy chain rearrangement. Alternative splicing results in multiple transcript variants encoding different isoforms.

Target:	Btk (pY223)
Reactivity:	Human, Mouse, Rat
Host:	Rabbit
Clonality:	Polyclonal
Tested Applications:	WB, IF/ICC
Recommended dilutions:	WB: 1/500 - 1/2000, IF/ICC: 1/20 - 1/100. Optimal dilutions/concentrations should be determined by the end user.
Immunogen:	Synthetic Peptide. A phospho specific peptide corresponding to residues surrounding Y223 of human Btk.
Purification:	Affinity purified.
Form:	Liquid
Isotype:	IgG
Conjugation:	Unconjugated
Storage:	Aliquot and store at -20 °C. Avoid repeated freeze/thaw cycles.
Molecular Weight:	Calculated MW: 76 kDa/79 kDa Observed MW: Refer to Figures

Abbexa Ltd, Innovation Centre, Cambridge Science Park, Cambridge, CB4 0EY, UK
Telephone: +44 (0) 1223 755950 - Fax: +44 (0) 1223 755951 - E-Mail: info@abbexa.com

Swiss Prot: [Q06187](#)

GeneID: [695](#)

Gene Symbol: BTK

Concentration: > 1 mg/ml

Buffer: PBS, pH 7.3, 0.02% sodium azide, 50% glycerol.

Note: This product is for research use only.