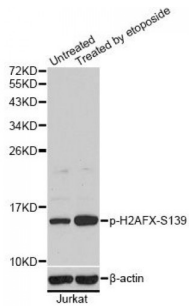


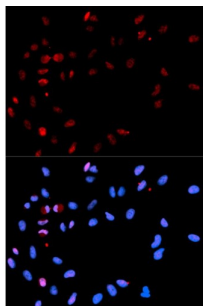
Abbexa Ltd, Innovation Centre, Cambridge Science Park, Cambridge, CB4 0EY, UK  
 Telephone: +44 (0) 1223 755950 - Fax: +44 (0) 1223 755951 - E-Mail: info@abbexa.com

## Histone H2A.x (pS139) Antibody

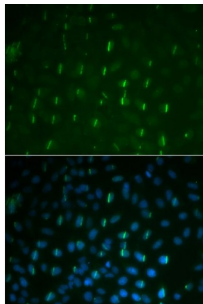
Catalogue No.: abx000167



Western blot analysis of extracts of Jurkat cells, using Phospho-H2AFX-S139 antibody (abx000167). Jurkat cells were treated by etoposide.



Immunofluorescence analysis of U2OS cells using Phospho-H2AFX-S139 antibody (abx000167). Blue: DAPI for nuclear staining.



Immunofluorescence analysis of U2OS cells using Phospho-H2AFX-S139 antibody (abx000167). Blue: DAPI for nuclear staining.

Histone H2A.x (pS139) Antibody is a Rabbit Polyclonal antibody against Histone H2A.x (pS139). Histones are basic nuclear proteins that are responsible for the nucleosome structure of the chromosomal fiber in eukaryotes. Two molecules of each of the four core histones (H2A, H2B, H3, and H4) form an octamer, around which approximately 146 bp of DNA is wrapped in repeating units, called nucleosomes. The linker histone, H1, interacts with linker DNA between nucleosomes and functions in the compaction of chromatin into higher order structures. This gene encodes a member of the histone H2A family, and generates two transcripts through the use of the conserved stem-loop termination motif, and the polyA addition motif.

**Target:** Histone H2A.x (pS139)

**Reactivity:** Human

**Host:** Rabbit

**Clonality:** Polyclonal

**Tested Applications:** WB, IF/ICC

Abbexa Ltd, Innovation Centre, Cambridge Science Park, Cambridge, CB4 0EY, UK  
Telephone: +44 (0) 1223 755950 - Fax: +44 (0) 1223 755951 - E-Mail: [info@abbexa.com](mailto:info@abbexa.com)

**Recommended dilutions:** WB: 1/500 - 1/2000, IF/ICC: 1/50 - 1/100. Optimal dilutions/concentrations should be determined by the end user.

**Immunogen:** Synthetic Peptide. A phospho specific peptide corresponding to residues surrounding S139 of human Histone H2A.x.

**Purification:** Affinity purified.

**Form:** Liquid

**Isotype:** IgG

**Conjugation:** Unconjugated

**Storage:** Aliquot and store at -20 °C. Avoid repeated freeze/thaw cycles.

**Molecular Weight:** Calculated MW: 15 kDa  
Observed MW: 15 kDa

**Swiss Prot:** [P16104](#)

**GeneID:** [3014](#)

**Gene Symbol:** H2AFX

**Concentration:** > 1 mg/ml

**Buffer:** PBS, pH 7.3, 0.02% sodium azide, 50% glycerol.

**Note:** This product is for research use only.