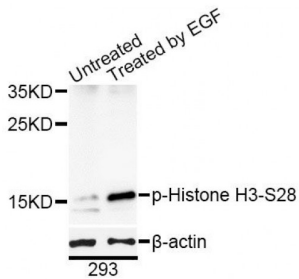
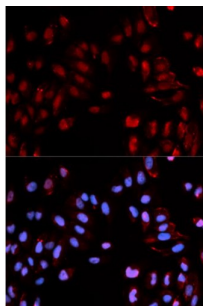


## HIST1H3B (pS29) Antibody

Catalogue No.: abx000165



Western blot analysis of extracts of 293T cells, using Phospho-Histone H3-S28 antibody (abx000165) at 1/1000 dilution. 293T cells were treated by EGF (25 µg/ml) for 30 minutes after serum-starvation overnight.



Immunofluorescence analysis of U2OS cells using Phospho-Histone H3-S28 antibody (abx000165). Blue: DAPI for nuclear staining.

HIST1H3B (pS29) Antibody is a Rabbit Polyclonal antibody against HIST1H3B (pS29). Histones are basic nuclear proteins that are responsible for the nucleosome structure of the chromosomal fiber in eukaryotes. This structure consists of approximately 146 bp of DNA wrapped around a nucleosome, an octamer composed of pairs of each of the four core histones (H2A, H2B, H3, and H4). The chromatin fiber is further compacted through the interaction of a linker histone, H1, with the DNA between the nucleosomes to form higher order chromatin structures. This gene is intronless and encodes a member of the histone H3 family. Transcripts from this gene lack polyA tails; instead, they contain a palindromic termination element. This gene is found in the large histone gene cluster on chromosome 6p22-p21.3.

**Target:** HIST1H3B (pS29)

**Reactivity:** Human, Mouse, Rat

**Host:** Rabbit

**Clonality:** Polyclonal

**Tested Applications:** WB, IF/ICC

**Recommended dilutions:** WB: 1/500 - 1/2000, IF/ICC: 1/20 - 1/100. Optimal dilutions/concentrations should be determined by the end user.

**Immunogen:** Synthetic Peptide. A phospho specific peptide corresponding to residues surrounding S29 of human HIST1H3B.

**Purification:** Affinity purified.

Abbexa Ltd, Innovation Centre, Cambridge Science Park, Cambridge, CB4 0EY, UK  
Telephone: +44 (0) 1223 755950 - Fax: +44 (0) 1223 755951 - E-Mail: [info@abbexa.com](mailto:info@abbexa.com)

<b>Form:</b>	Liquid
<b>Isotype:</b>	IgG
<b>Conjugation:</b>	Unconjugated
<b>Storage:</b>	Aliquot and store at -20 °C. Avoid repeated freeze/thaw cycles.
<b>Molecular Weight:</b>	Calculated MW: 15 kDa Observed MW: 17 kDa
<b>Swiss Prot:</b>	<a href="#">P68431</a>
<b>GeneID:</b>	<a href="#">8358</a>
<b>Gene Symbol:</b>	HIST1H3A
<b>Concentration:</b>	> 1 mg/ml
<b>Buffer:</b>	PBS, pH 7.3, 0.02% sodium azide, 50% glycerol.
<b>Note:</b>	This product is for research use only.