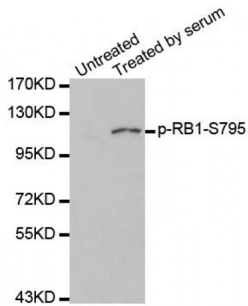


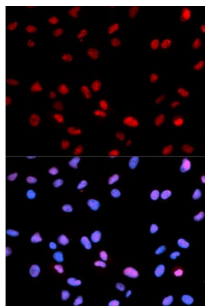
Abbexa Ltd, Innovation Centre, Cambridge Science Park, Cambridge, CB4 0EY, UK
Telephone: +44 (0) 1223 755950 - Fax: +44 (0) 1223 755951 - E-Mail: info@abbexa.com

RB1 (pS795) Antibody

Catalogue No.: abx000160



Western blot analysis of extracts of 293 cell line, using phospho-RB-S795 antibody (abx000160).



Immunofluorescence analysis of U2OS cells using Phospho-RB-S795 antibody (abx000160). Blue: DAPI for nuclear staining.

RB1 (pS795) Antibody is a Rabbit Polyclonal antibody against RB1 (pS795). The protein encoded by this gene is a negative regulator of the cell cycle and was the first tumor suppressor gene found. The encoded protein also stabilizes constitutive heterochromatin to maintain the overall chromatin structure. The active, hypophosphorylated form of the protein binds transcription factor E2F1. Defects in this gene are a cause of childhood cancer retinoblastoma (RB1), bladder cancer, and osteogenic sarcoma.

Target: RB1 (pS795)

Reactivity: Human

Host: Rabbit

Clonality: Polyclonal

Tested Applications: WB, IF/ICC

Recommended dilutions: WB: 1/500 - 1/1000, IF/ICC: 1/50 - 1/100. Optimal dilutions/concentrations should be determined by the end user.

Immunogen: Synthetic Peptide. A phospho specific peptide corresponding to residues surrounding S795 of human RB.

Purification: Affinity purified.

Form: Liquid

Abbexa Ltd, Innovation Centre, Cambridge Science Park, Cambridge, CB4 0EY, UK
Telephone: +44 (0) 1223 755950 - Fax: +44 (0) 1223 755951 - E-Mail: info@abbexa.com

Isotype:	IgG
Conjugation:	Unconjugated
Storage:	Aliquot and store at -20 °C. Avoid repeated freeze/thaw cycles.
Molecular Weight:	Calculated MW: 106 kDa Observed MW: 106 kDa
Swiss Prot:	P06400
GeneID:	5925
Gene Symbol:	RB1
Concentration:	> 1 mg/ml
Buffer:	PBS, pH 7.3, 0.02% sodium azide, 50% glycerol.
Note:	This product is for research use only.