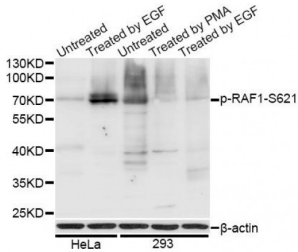
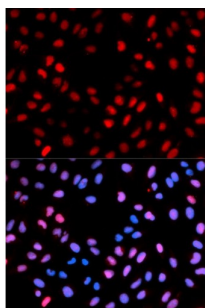


RAF1 (pS621) Antibody

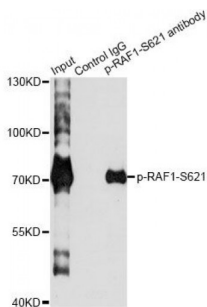
Catalogue No.: abx000159



Western blot analysis of extracts of HeLa and 293T cells, using Phospho-RAF1-S621 antibody (abx000159) at 1/1000 dilution. HeLa cells were treated by EGF (100ng/ml) for 30 minutes after serum-starvation overnight. 293T cells were treated by PMA/TPA (200nM) for 30 minutes or treated by EGF (25 µg/ml) for 30 minutes after serum-starvation overnight.



Immunofluorescence analysis of U2OS cells using Phospho-RAF1-S621 antibody (abx000159). Blue: DAPI for nuclear staining.



Immunoprecipitation analysis of 200 µg extracts of HeLa cells treated by EGF using 2.5 µg Phospho-RAF1-S621 antibody (abx000159). Western blot was performed from the immunoprecipitate using Phospho-RAF1-S621 antibody (abx000159) at a dilution of 1/1000.

RAF1 (pS621) Antibody is a Rabbit Polyclonal antibody against RAF1 (pS621). This gene is the cellular homolog of viral raf gene (v-raf). The encoded protein is a MAP kinase kinase kinase (MAP3K), which functions downstream of the Ras family of membrane associated GTPases to which it binds directly. Once activated, the cellular RAF1 protein can phosphorylate to activate the dual specificity protein kinases MEK1 and MEK2, which in turn phosphorylate to activate the serine/threonine specific protein kinases, ERK1 and ERK2. Activated ERKs are pleiotropic effectors of cell physiology and play an important role in the control of gene expression involved in the cell division cycle, apoptosis, cell differentiation and cell migration. Mutations in this gene are associated with Noonan syndrome 5 and LEOPARD syndrome 2.

Target: RAF1 (pS621)

Reactivity: Human

Host: Rabbit

Clonality: Polyclonal

Abbexa Ltd, Innovation Centre, Cambridge Science Park, Cambridge, CB4 0EY, UK
Telephone: +44 (0) 1223 755950 - Fax: +44 (0) 1223 755951 - E-Mail: info@abbexa.com

Tested Applications: WB, IF/ICC, IP

Recommended dilutions: WB: 1/500 - 1/2000, IF/ICC: 1/50 - 1/200, IP: 1/50 - 1/100. Optimal dilutions/concentrations should be determined by the end user.

Immunogen: Synthetic Peptide. A phospho specific peptide corresponding to residues surrounding S621 of human RAF1.

Purification: Affinity purified.

Form: Liquid

Isotype: IgG

Conjugation: Unconjugated

Storage: Aliquot and store at -20 °C. Avoid repeated freeze/thaw cycles.

Molecular Weight: Calculated MW: 73 kDa/75 kDa
Observed MW: 73 kDa

Swiss Prot: [P04049](#)

GeneID: [5894](#)

Gene Symbol: RAF1

Concentration: > 1 mg/ml

Buffer: PBS, pH 7.3, 0.02% sodium azide, 50% glycerol.

Note: This product is for research use only.