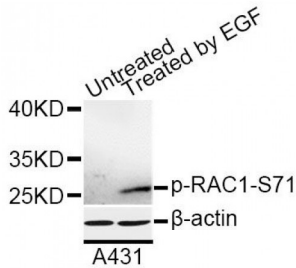


RAC1 (pS71) Antibody

Catalogue No.: abx000158



Western blot analysis of extracts of A-431 cells, using Phospho-RAC1-S71 antibody (abx000158) at 1/1000 dilution. A431 cells were treated by EGF (100ng/ml) for 30 minutes after serum-starvation overnight.

RAC1 (pS71) Antibody is a Rabbit Polyclonal antibody against RAC1 (pS71). The protein encoded by this gene is a GTPase which belongs to the RAS superfamily of small GTP-binding proteins. Members of this superfamily appear to regulate a diverse array of cellular events, including the control of cell growth, cytoskeletal reorganization, and the activation of protein kinases. Two transcript variants encoding different isoforms have been found for this gene.

Target: RAC1 (pS71)

Reactivity: Human, Rat

Host: Rabbit

Clonality: Polyclonal

Tested Applications: WB

Recommended dilutions: WB: 1/500 - 1/2000. Optimal dilutions/concentrations should be determined by the end user.

Immunogen: Synthetic Peptide. A phospho specific peptide corresponding to residues surrounding S71 of human RAC1.

Purification: Affinity purified.

Form: Liquid

Isotype: IgG

Conjugation: Unconjugated

Storage: Aliquot and store at -20 °C. Avoid repeated freeze/thaw cycles.

Molecular Weight: Calculated MW: 21 kDa/23 kDa
Observed MW: 26 kDa

Abbexa Ltd, Innovation Centre, Cambridge Science Park, Cambridge, CB4 0EY, UK
Telephone: +44 (0) 1223 755950 - Fax: +44 (0) 1223 755951 - E-Mail: info@abbexa.com

Swiss Prot: [P63000](#)

GeneID: [5879](#)

Gene Symbol: RAC1

Concentration: > 1 mg/ml

Buffer: PBS, pH 7.3, 0.02% sodium azide, 50% glycerol.

Note: This product is for research use only.