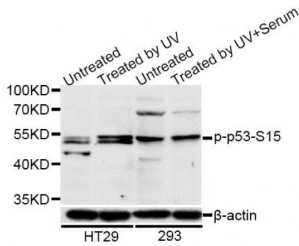


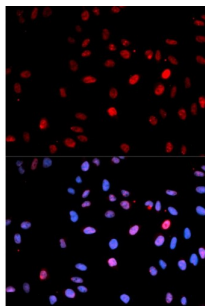
Abbexa Ltd, Innovation Centre, Cambridge Science Park, Cambridge, CB4 0EY, UK  
Telephone: +44 (0) 1223 755950 - Fax: +44 (0) 1223 755951 - E-Mail: info@abbexa.com

## p53 Phospho-Ser15 (p53 pS15) Antibody

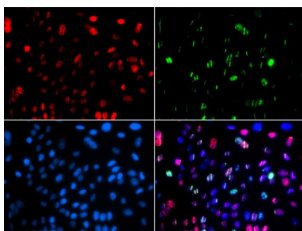
Catalogue No.: abx000156



Western blot analysis of extracts of HT-29 and 293 cells, using Phospho-p53-S15 antibody (abx000156) at 1/1000 dilution. HT-29 cells were treated by UV for 15-30 minutes. 293 cells were treated by UV for 15-30 minutes.



Immunofluorescence analysis of U2OS cells using Phospho-p53-S15 antibody (abx000156). Blue: DAPI for nuclear staining.



Immunofluorescence analysis of GFP-RNF168 transgenic U2OS cells using Phospho-TP53-S15 antibody (abx000156). Green  $\square$  GFP-RNF168 fusion protein expression for DNA damage marker. Blue: DAPI for nuclear staining. RNF168(GFP) can be used to mark cells damaged by UV-A laser for they always gather around DNA damage region.

p53 (pS15) Antibody is a Rabbit Polyclonal antibody against p53 (pS15). This gene encodes a tumor suppressor protein containing transcriptional activation, DNA binding, and oligomerization domains. The encoded protein responds to diverse cellular stresses to regulate expression of target genes, thereby inducing cell cycle arrest, apoptosis, senescence, DNA repair, or changes in metabolism. Mutations in this gene are associated with a variety of human cancers, including hereditary cancers such as Li-Fraumeni syndrome. Alternative splicing of this gene and the use of alternate promoters result in multiple transcript variants and isoforms. Additional isoforms have also been shown to result from the use of alternate translation initiation codons (PMIDs: 12032546, 20937277).

**Target:** p53 (pS15)

**Reactivity:** Human

**Host:** Rabbit

**Modification:** Phosphorylation

Abbexa Ltd, Innovation Centre, Cambridge Science Park, Cambridge, CB4 0EY, UK  
Telephone: +44 (0) 1223 755950 - Fax: +44 (0) 1223 755951 - E-Mail: [info@abbexa.com](mailto:info@abbexa.com)

|                               |   |
|-------------------------------|---|
| <b>Target Modification:</b>   | Ser15   |
| <b>Clonality:</b>             | Polyclonal  |
| <b>Tested Applications:</b>   | WB, IF/ICC  |
| <b>Recommended dilutions:</b> | WB: 1/500 - 1/2000, IF/ICC: 1/20 - 1/50. Optimal dilutions/concentrations should be determined by the end user. |
| <b>Immunogen:</b>             | Synthetic Peptide. A phospho specific peptide corresponding to residues surrounding S15 of human p53.           |
| <b>Purification:</b>          | Affinity purified.  |
| <b>Form:</b>                  | Liquid  |
| <b>Isotype:</b>               | IgG   |
| <b>Conjugation:</b>           | Unconjugated  |
| <b>Storage:</b>               | Aliquot and store at -20 °C. Avoid repeated freeze/thaw cycles.   |
| <b>Molecular Weight:</b>      | Calculated MW: 23-43 kDa<br>Observed MW: 55 kDa   |
| <b>Swiss Prot:</b>            | <a href="#">P04637</a>  |
| <b>GeneID:</b>                | <a href="#">7157</a>  |
| <b>Gene Symbol:</b>           | TP53  |
| <b>Concentration:</b>         | > 1 mg/ml   |
| <b>Buffer:</b>                | PBS, pH 7.3, 0.02% sodium azide, 50% glycerol.  |
| <b>Note:</b>                  | This product is for research use only.  |