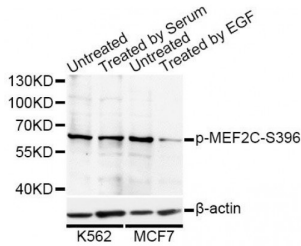


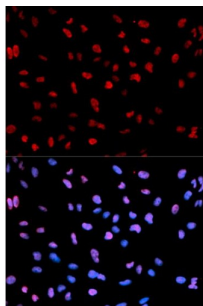
Abbexa Ltd, Innovation Centre, Cambridge Science Park, Cambridge, CB4 0EY, UK
 Telephone: +44 (0) 1223 755950 - Fax: +44 (0) 1223 755951 - E-Mail: info@abbexa.com

MEF2C (pS396) Antibody

Catalogue No.: abx000148



Western blot analysis of extracts of K-562 and MCF-7 cells, using Phospho-MEF2C-S396 antibody (abx000148) at 1/1000 dilution. K562 cells were treated by 10% FBS for 30 minutes after serum-starvation overnight. MCF7 cells were treated by EGF (100ng/ml) for 30 minutes after serum-starvation overnight.



Immunofluorescence analysis of U2OS cells using Phospho-MEF2C-S396 antibody (abx000148). Blue: DAPI for nuclear staining.

MEF2C (pS396) Antibody is a Rabbit Polyclonal antibody against MEF2C (pS396). This locus encodes a member of the MADS box transcription enhancer factor 2 (MEF2) family of proteins, which play a role in myogenesis. The encoded protein, MEF2 polypeptide C, has both trans-activating and DNA binding activities. This protein may play a role in maintaining the differentiated state of muscle cells. Mutations and deletions at this locus have been associated with severe mental retardation, stereotypic movements, epilepsy, and cerebral malformation. Alternatively spliced transcript variants have been described.

Target: MEF2C (pS396)

Reactivity: Human

Host: Rabbit

Clonality: Polyclonal

Tested Applications: WB, IF/ICC

Recommended dilutions: WB: 1/500 - 1/2000, IF/ICC: 1/50 - 1/200. Optimal dilutions/concentrations should be determined by the end user.

Immunogen: Synthetic Peptide. A phospho specific peptide corresponding to residues surrounding S396 of human MEF2C.

Purification: Affinity purified.

Form: Liquid

Abbexa Ltd, Innovation Centre, Cambridge Science Park, Cambridge, CB4 0EY, UK
Telephone: +44 (0) 1223 755950 - Fax: +44 (0) 1223 755951 - E-Mail: info@abbexa.com

| | |
|--------------------------|--|
| Isotype: | IgG |
| Conjugation: | Unconjugated |
| Storage: | Aliquot and store at -20 °C. Avoid repeated freeze/thaw cycles. |
| Molecular Weight: | Calculated MW: 44 kDa/47 kDa/50 kDa/51 kDa/52 kDa Observed MW: 60 kDa |
| Swiss Prot: | Q06413 |
| GeneID: | 4208 |
| Gene Symbol: | MEF2C |
| Concentration: | > 1 mg/ml |
| Buffer: | PBS, pH 7.3, 0.02% sodium azide, 50% glycerol. |
| Note: | This product is for research use only. |