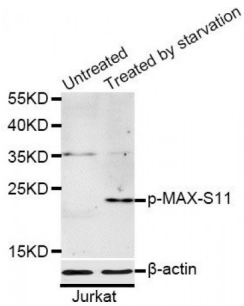
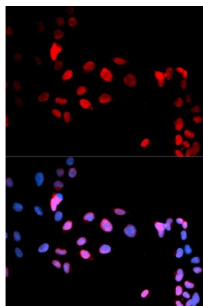


MAX (pS11) Antibody

Catalogue No.: abx000145



Western blot analysis of extracts of Jurkat cells, using Phospho-MAX-S11 antibody (abx000145) at 1/1000 dilution. Jurkat cells were treated by serum-starvation overnight.



Immunofluorescence analysis of U2OS cells using Phospho-MAX-S11 antibody (abx000145). Blue: DAPI for nuclear staining.

MAX (pS11) Antibody is a Rabbit Polyclonal antibody against MAX (pS11). The protein encoded by this gene is a member of the basic helix-loop-helix leucine zipper (bHLHZ) family of transcription factors. It is able to form homodimers and heterodimers with other family members, which include Mad, Mxi1 and Myc. Myc is an oncoprotein implicated in cell proliferation, differentiation and apoptosis. The homodimers and heterodimers compete for a common DNA target site (the E box) and rearrangement among these dimer forms provides a complex system of transcriptional regulation. Mutations of this gene have been reported to be associated with hereditary pheochromocytoma. A pseudogene of this gene is located on the long arm of chromosome 7. Alternative splicing results in multiple transcript variants.

Target: MAX (pS11)

Reactivity: Human

Host: Rabbit

Clonality: Polyclonal

Tested Applications: WB, IF/ICC

Recommended dilutions: WB: 1/500 - 1/2000, IF/ICC: 1/50 - 1/200. Optimal dilutions/concentrations should be determined by the end user.

Immunogen: Synthetic Peptide. A phospho specific peptide corresponding to residues surrounding S11 of human MAX.

Purification: Affinity purified.

Abbexa Ltd, Innovation Centre, Cambridge Science Park, Cambridge, CB4 0EY, UK
Telephone: +44 (0) 1223 755950 - Fax: +44 (0) 1223 755951 - E-Mail: info@abbexa.com

Form:	Liquid
Isotype:	IgG
Conjugation:	Unconjugated
Storage:	Aliquot and store at -20 °C. Avoid repeated freeze/thaw cycles.
Molecular Weight:	Calculated MW: 9 kDa/11 kDa/12 kDa/15 kDa/17 kDa/18 kDa Observed MW: 18 kDa
Swiss Prot:	P61244
GeneID:	4149
Gene Symbol:	MAX
Concentration:	> 1 mg/ml
Buffer:	PBS, pH 7.3, 0.02% sodium azide, 50% glycerol.
Note:	This product is for research use only.