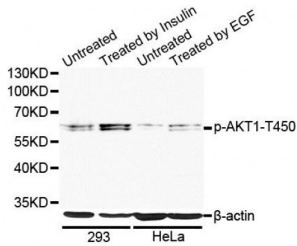
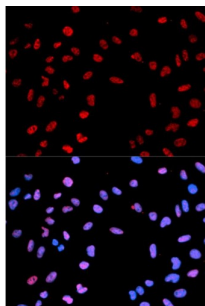


AKT1 (pT450) Antibody

Catalogue No.: abx000094



Western blot analysis of extracts of 293 and HeLa cells, using Phospho-AKT1-T450 antibody (abx000094) at 1/1000 dilution. 293 cells were treated by Insulin (100nM) for 10 minutes after serum-starvation overnight. HeLa cells were treated by EGF (100ng/ml) for 30 minutes after serum-starvation overnight.



Immunofluorescence analysis of MCF-7 cells using Phospho-AKT1-T450 antibody (abx000094). Blue: DAPI for nuclear staining.

AKT1 (pT450) Antibody is a Rabbit Polyclonal antibody against AKT1 (pT450). The serine-threonine protein kinase encoded by the AKT1 gene is catalytically inactive in serum-starved primary and immortalized fibroblasts. AKT1 and the related AKT2 are activated by platelet-derived growth factor. The activation is rapid and specific, and it is abrogated by mutations in the pleckstrin homology domain of AKT1. It was shown that the activation occurs through phosphatidylinositol 3-kinase. In the developing nervous system AKT is a critical mediator of growth factor-induced neuronal survival. Survival factors can suppress apoptosis in a transcription-independent manner by activating the serine/threonine kinase AKT1, which then phosphorylates and inactivates components of the apoptotic machinery. Mutations in this gene have been associated with the Proteus syndrome. Multiple alternatively spliced transcript variants have been found for this gene.

Target: AKT1 (pT450)

Reactivity: Human

Host: Rabbit

Clonality: Polyclonal

Tested Applications: WB, IF/ICC

Recommended dilutions: WB: 1/500 - 1/1000, IF/ICC: 1/20 - 1/100. Optimal dilutions/concentrations should be determined by the end user.

Immunogen: Synthetic Peptide. A phospho specific peptide corresponding to residues surrounding T450 of human AKT1.

Abbexa Ltd, Innovation Centre, Cambridge Science Park, Cambridge, CB4 0EY, UK
Telephone: +44 (0) 1223 755950 - Fax: +44 (0) 1223 755951 - E-Mail: info@abbexa.com

Purification:	Affinity purified.
Form:	Liquid
Isotype:	IgG
Conjugation:	Unconjugated
Storage:	Aliquot and store at -20 °C. Avoid repeated freeze/thaw cycles.
Molecular Weight:	Calculated MW: 48 kDa/55 kDa Observed MW: 56 kDa
Swiss Prot:	P31749
GeneID:	207
Gene Symbol:	AKT1
Concentration:	> 1 mg/ml
Buffer:	PBS, pH 7.3, 0.02% sodium azide, 50% glycerol.
Note:	This product is for research use only.