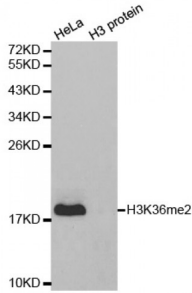


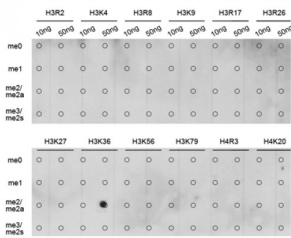
Abbexa Ltd, Innovation Centre, Cambridge Science Park, Cambridge, CB4 0EY, UK
 Telephone: +44 (0) 1223 755950 - Fax: +44 (0) 1223 755951 - E-Mail: info@abbexa.com

Histone H3K36me2 Antibody

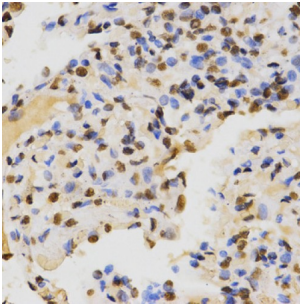
Catalogue No.: abx000012



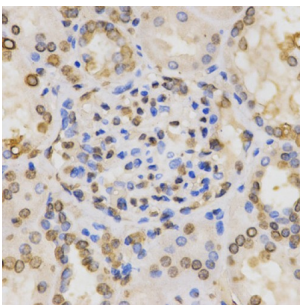
Western blot analysis of extracts of various cell lines, using Dimethyl-Histone H3-K36 antibody (abx000012).



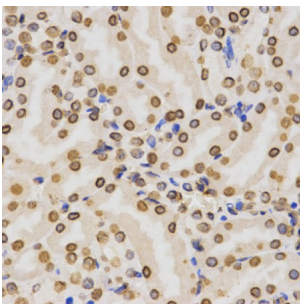
Dot-blot analysis of various methylation peptides using Dimethyl-Histone H3-K36 antibody (abx000012).



Immunohistochemistry of paraffin-embedded human lung using Dimethyl-Histone H3-K36 antibody (abx000012) at dilution of 1/200 (40x lens).

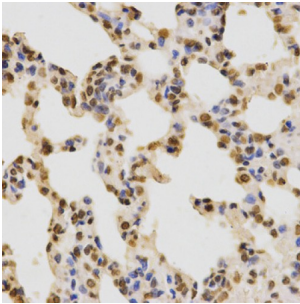


Immunohistochemistry of paraffin-embedded human kidney using Dimethyl-Histone H3-K36 antibody (abx000012) at dilution of 1/200 (40x lens).

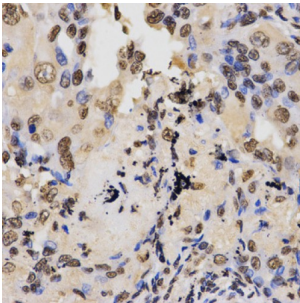


Immunohistochemistry of paraffin-embedded mouse kidney using Dimethyl-Histone H3-K36 antibody (abx000012) at dilution of 1/200 (40x lens).

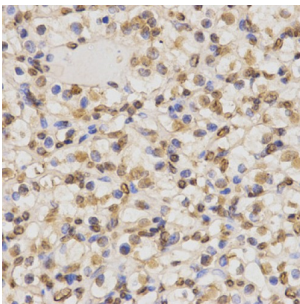
Abbexa Ltd, Innovation Centre, Cambridge Science Park, Cambridge, CB4 0EY, UK
Telephone: +44 (0) 1223 755950 - Fax: +44 (0) 1223 755951 - E-Mail: info@abbexa.com



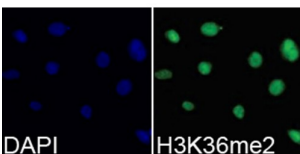
Immunohistochemistry of paraffin-embedded rat lung using Dimethyl-Histone H3-K36 antibody (abx000012) at dilution of 1/200 (40x lens).



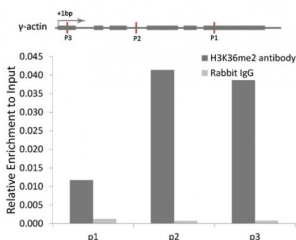
Immunohistochemistry of paraffin-embedded human lung cancer using Dimethyl-Histone H3-K36 antibody (abx000012) at dilution of 1/200 (40x lens).



Immunohistochemistry of paraffin-embedded human kidney cancer using Dimethyl-Histone H3-K36 antibody (abx000012) at dilution of 1/200 (40x lens).



Immunofluorescence analysis of 293T cells using Dimethyl-Histone H3-K36 antibody (abx000012). Blue: DAPI for nuclear staining.



Chromatin immunoprecipitation analysis of γ -actin gene from 293 cell line, using Dimethyl-Histone H3-K36 antibody (abx000012) and rabbit IgG. P1, P2 and P3 were probes located on γ -actin gene as the schematic diagram illustrated. The amount of immunoprecipitated DNA was checked by quantitative PCR. Histogram was constructed by the ratios of the immunoprecipitated DNA to the input.

Histone H3K36me2 Antibody is a Rabbit Polyclonal antibody against Histone H3K36me2. Histones are basic nuclear proteins that are responsible for the nucleosome structure of the chromosomal fiber in eukaryotes. Nucleosomes consist of approximately 146 bp of DNA wrapped around a histone octamer composed of pairs of each of the four core histones (H2A, H2B, H3, and H4). The chromatin fiber is further compacted through the interaction of a linker histone, H1, with the DNA

Abbexa Ltd, Innovation Centre, Cambridge Science Park, Cambridge, CB4 0EY, UK
Telephone: +44 (0) 1223 755950 - Fax: +44 (0) 1223 755951 - E-Mail: info@abbexa.com

between the nucleosomes to form higher order chromatin structures. This gene is intronless and encodes a member of the histone H3 family. Transcripts from this gene lack polyA tails; instead, they contain a palindromic termination element. This gene is located separately from the other H3 genes that are in the histone gene cluster on chromosome 6p22-p21.3.

Target:	Histone H3K36me2
Reactivity:	Human, Mouse, Rat
Host:	Rabbit
Clonality:	Polyclonal
Tested Applications:	WB, IHC, IF/ICC, IP, ChIP
Recommended dilutions:	WB: 1/500 - 1/2000, IHC: 1/50 - 1/200, IF/ICC: 1/50 - 1/200, IP: 1/50 - 1/200, ChIP: 1/20 - 1/100, ChIPseq: 1/20 - 1/100. Optimal dilutions/concentrations should be determined by the end user.
Immunogen:	Synthetic Peptide. A synthetic methylated peptide corresponding to residues surrounding K36 of human histone H3.
Purification:	Affinity purified.
Form:	Liquid
Isotype:	IgG
Conjugation:	Unconjugated
Storage:	Aliquot and store at -20 °C. Avoid repeated freeze/thaw cycles.
Molecular Weight:	Calculated MW: 15 kDa Observed MW: 18 kDa
Swiss Prot:	Q16695
GeneID:	8290
Gene Symbol:	H3K36me2
Concentration:	> 1 mg/ml
Buffer:	PBS, pH 7.3, 0.02% sodium azide, 50% glycerol.
Note:	This product is for research use only.