

**Synonym**

CD244,2B4,SLAMF4,NKR2B4,NAIL,h2B4

**Source**

Human 2B4, Llama IgG2b Fc Tag(2B4-H5256) is expressed from human 293 cells (HEK293). It contains AA Cys 22 - Arg 221 (Accession # [Q9BZW8-2](#)).  
Predicted N-terminus: Cys 22

**Molecular Characterization**

2B4(Cys 22 - Arg 221) Q9BZW8-2	LlamaFc(Glu 1 - Ser 243) AAX73259.1
-----------------------------------	--

This protein carries a llama IgG2b Fc tag at the C-terminus.

The protein has a calculated MW of 50.1 kDa. The protein migrates as 65-70 kDa under reducing (R) condition (SDS-PAGE) due to glycosylation.

**Endotoxin**

Less than 0.01 EU per µg by the LAL method.

**Purity**

>95% as determined by SDS-PAGE.

**Formulation**

Lyophilized from 0.22 µm filtered solution in 50 mM Tris, 100 mM Glycine, 25 mM Arginine, 150 mM NaCl, pH7.5 with trehalose as protectant.

Contact us for customized product form or formulation.

**Reconstitution**

Please see Certificate of Analysis for specific instructions.

*For best performance, we strongly recommend you to follow the reconstitution protocol provided in the CoA.*

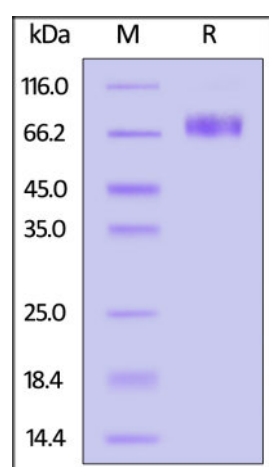
**Storage**

For long term storage, the product should be stored at lyophilized state at -20°C or lower.

*Please avoid repeated freeze-thaw cycles.*

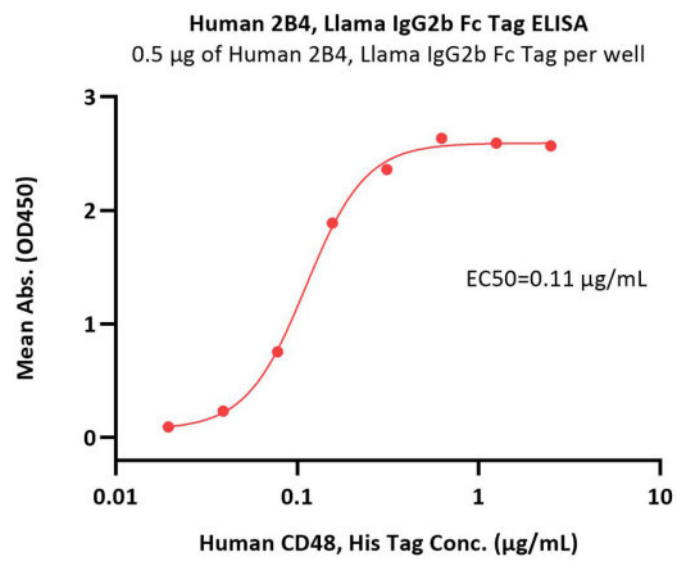
This product is stable after storage at:

- -20°C to -70°C for 12 months in lyophilized state;
- -70°C for 3 months under sterile conditions after reconstitution.

**SDS-PAGE**

Human 2B4, Llama IgG2b Fc Tag on SDS-PAGE under reducing (R) condition. The gel was stained with Coomassie Blue. The purity of the protein is greater than 95%.

**Bioactivity-ELISA**



Immobilized Human 2B4, Llama IgG2b Fc Tag (Cat. No. 2B4-H5256) at 5 µg/mL (100 µL/well) can bind Human CD48, His Tag (Cat. No. BC1-H5226) with a linear range of 0.02-0.625 µg/mL (QC tested).

## Background

Natural killer cell receptor 2B4 is also known as NK cell type I receptor protein 2B4 (NKR2B4 or h2B4), SLAM family member 4 (SLAMF4), Signaling lymphocytic activation molecule 4, CD antigen CD244. NKR2B4 / CD244 contains two Ig-like (immunoglobulin-like) domains. CD244 is expressed in spleen, PBL, followed by lung, liver, testis and small intestine. CD244 interacts with CD48. Following phosphorylation, CD244 is able to recruit PTPN11/SHP-2 and SH2D1A/SAP. SLAMF4 modulate other receptor-ligand interactions to enhance leukocyte activation. CD244/2B4 is the only heterophilic receptor of SLAM family.

## Clinical and Translational Updates

Please contact us via [TechSupport@acrobiosystems.com](mailto:TechSupport@acrobiosystems.com) if you have any question on this product.