

RayBio[®] Label-Based (L-Series) Rat Antibody Array L-1500 Membrane Kit

A combination of Rat L-2, L-3, and L-4 arrays

Patent Pending Technology User Manual (January 1, 2022)

For the simultaneous detection of the relative expression of 1500 rat proteins in serum, plasma, cell culture supernatants, cell/tissue lysates and other body fluids.

L-Series Rat Antibody Array L-1500
Cat# AAR-BLM-1500-2 (2 Sample Kit)
Cat# AAR-BLM-1500-4 (4 Sample Kit)

**Please read manual carefully
before starting experiment**



Your Provider of Excellent Protein Array Systems and Services

Tel: (Toll Free) 1-888-494-8555 or +1-770-729-2992; Fax: +1-770-206-2393;
Website: www.raybiotech.com Email: info@raybiotech.com

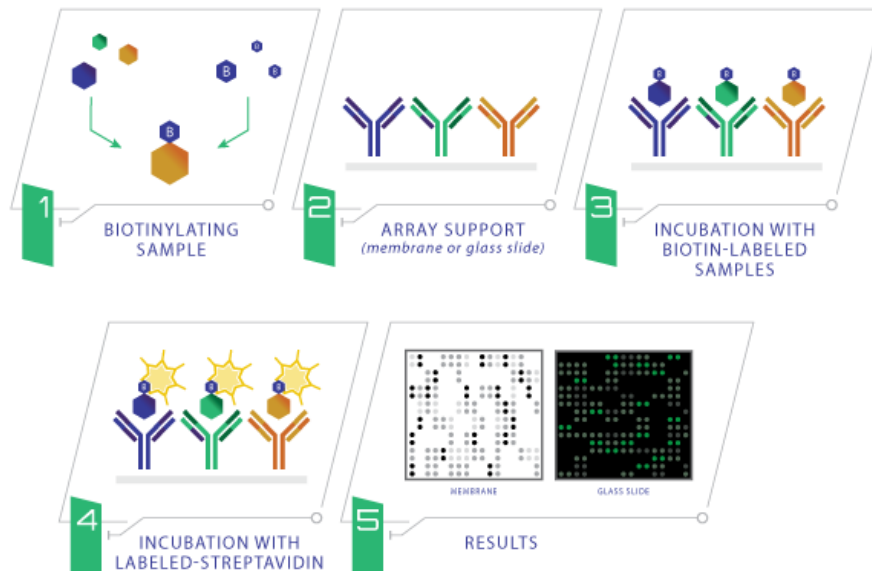
TABLE OF CONTENTS

I.	Introduction and How It Works.....	2
II.	Materials Provided.....	3
	A. Storage Recommendations.....	3
	B. Additional Materials Required.....	3
III.	Overview and General Considerations.....	4
	A. Preparation and Storage of Samples.....	4
	B. Handling the Array Membrane.....	6
	C. Incubation of Antibody Array.....	6
	D. Layout of Array Membrane.....	7
IV.	Protocol.....	8
	A. Sample Purification.....	8
	B. Biotin Labeling of Sample.....	9
	C. Blocking and Incubations.....	10
	D. Detection.....	12
V.	Antibody Array Map	13
VI.	Antibody Array Target Lists.....	14
VII.	Interpretation of Results.....	17
	A. Explanation of Controls Spots.....	17
	B. Typical Results.....	17
	C. Background Subtraction.....	18
	D. Normalization of Array Data.....	18
	E. Threshold of Significant Difference.....	19
	F. Pathway Analysis of the Array Proteins.....	19
VIII.	Troubleshooting Guide.....	20
IX.	Selected References.....	21

I. Introduction

Combining direct antigen-labeling technology with our vast library of array-validated antibodies, RayBiotech has created the largest commercially available antibody array to date. With the L-Series high density array platform, researchers can now detect thousands of proteins simultaneously, obtaining a broad, panoramic view of protein expression. Our newly expanded panel includes a wide variety of metabolic enzymes, structural proteins, epigenetic markers, neuroregulatory factors, in addition to our popular list of cytokines, growth factors, receptors, adipokines, proteases, and signaling proteins. Available on both glass slide and membrane formats, this array is ideally suited for biomarker discovery studies and exploratory screens.

The first step in using the RayBio® L-Series Antibody Array is to biotinylate the primary amine groups of the proteins in your sample (sera or plasma, cell culture supernatants, cell lysates or tissue lysates). The membrane arrays are then blocked, similar to a Western blot, and the biotin-labeled sample is added onto the membrane array which is pre-printed with capture antibodies and incubated to allow for interaction of target proteins. After incubation with HRP-Conjugated Streptavidin, the signals can be visualized by chemiluminescence.



II. Materials Provided

A. Storage Recommendations

Upon receipt, the kit should be stored at 4 °C or below and must be used within 6 months from the date of shipment. For longer period of storage, Labeling Reagent (Item B) and Array Membrane (Item E) should be stored at -20 °C and avoid repeated freeze-thaw cycles. Labeling Reagent (Item B) should be prepared fresh before use. After initial use, Labeling Buffer, Blocking Buffer, Stop Solution, HRP-Conjugated Streptavidin, and Detection Buffers C and D should be stored at 4 °C to avoid repeated freeze-thaw cycles (may be stored for up to 3 months).

ITEM	DESCRIPTION	2 SAMPLE KIT	4 SAMPLE KIT
B	Labeling Reagent	2 vials	4 vials
C	Labeling Buffer	1 bottle (30 ml)	1 bottle (30 ml)
D	Stop Solution	1 vial (50 µl)	1 vial (50 µl)
E	L-series Antibody Array Membranes	2 membranes each of Rat L-2, L-3, and L-4	4 membranes each of Rat L-2, L-3, and L-4
F	4X Blocking Buffer	2 bottles (30 ml)	3 bottles (30 ml)
I	500X HRP-Conjugated Streptavidin Concentrate	2 vials (100 µl)	3 vials (100 µl)
K	Detection Buffer C	2 bottles (10 ml)	4 bottles (10 ml)
L	Detection Buffer D	2 bottles (10 ml)	4 bottles (10 ml)
G	20X Wash Buffer 1 Concentrate	2 bottles (30 ml)	4 bottles (30 ml)
H	20X Wash Buffer 2 Concentrate	2 bottles (30 ml)	4 bottles (30 ml)
J-2	Spin Columns (10 ml)	4 columns	8 columns
N/A	Plastic Incubation Trays (w/lid)	6 trays	12 trays
N/A	2X Lysis Buffer	1 bottle (10 ml)	1 bottle (10 ml)
Other Kit Components: Plastic Sheets			

B. Additional Materials Required

- 2-5 ml tube, small plastic or glass containers
- 50 ml conical collection tubes
- Orbital shaker or oscillating rocker
- Kodak X-Omat™ AR film (REF 165 1454) and film processor or Chemiluminescence imaging system

- Pipettors, pipette tips and other common lab consumables
- Eppendorf tube

III. Overview and General Considerations

A. Preparation and Storage of Samples

1) Preparation of Cell Culture Supernatants

1. Seed cells at a density of 1×10^6 cells in 100 mm tissue culture dishes.*
2. Culture cells in complete culture medium for ~24–48 hours.**
3. Replenish with serum-free or low-serum medium such as 0.2% FCS/FBS serum, and then incubate cells again for ~48 hours.**,†
4. To collect supernatants, centrifuge at 1,000 x g for 10 min and store as ≤ 1 ml aliquots at -80°C until needed.
5. If you want to use cell mass for inter-sample normalization, measure the total wet weight of cultured cells in the pellet and/or culture dish. You may then normalize between arrays by dividing densitometry signals by total cell mass (i.e., express results as the relative amount of protein expressed/mg total cell mass). Or you can normalize between arrays by determining the cell lysate concentration using a total protein assay (BCA Protein Assay Kit, Pierce, Prod #: 23227).

**The density of cells per dish used is dependent on the cell type. More or less cells may be required.*

***Optimal culture time may vary and will depend on the cell line, treatment conditions and other factors.*

†Bovine serum proteins produce detectable signals on the RayBio® L-Series Array in media containing serum concentrations as low as 0.2%. When testing serum-containing media, we strongly recommend testing an uncultured media blank for comparison with sample results.

2) Extracting Protein from Cells

1. Centrifuging Cells:

a. Adherent Cells:

- i. Remove supernatant from cell culture and wash cells gently twice with cold 1X PBS taking care not to disturb cell layer.
- ii. Add enough cold 1X PBS to cover cell layer and use cell scraper to detach cells.

b. Cells in Suspension: Pellet the cells by centrifuging using a microcentrifuge at 1500 rpm for 10 min.

2. Make sure to remove any remaining PBS before adding 1X Cell Lysis Buffer (2X Cell Lysis Buffer should be diluted 2-fold with ddH₂O). Solubilize the cells at 2×10^7 cells/ml in 1X Cell Lysis Buffer.
3. Pipette up and down to resuspend cells and rock the lysates gently at 2–8 °C for 30 minutes. Transfer extracts to microfuge tubes and centrifuge at 13,000 rpm for 10 min at 2-8 °C.

Note: If the lysates appear to be cloudy, transfer the lysates to a clean tube, centrifuge again at 13,000 rpm for 20 minutes at 2-8°C. If the lysates are still not clear, store them at -20°C for 20 minutes. Remove from the freezer and immediately centrifuge at 13,000 rpm for 20 minutes at 2-8°C.

4. Transfer lysates to a clean tube. Determine cell lysate concentrations using a total protein assay (BCA Protein Assay Kit, Pierce, Prod# 23227). Aliquot the lysates and store at -80°C.

3) Extracting Protein from Crude Tissue

1. Transfer approximately 100 mg crude tissue into a tube with 1 ml 1X Cell Lysis Buffer (2X Cell Lysis Buffer should be diluted 2-fold with ddH₂O).

2. Homogenize the tissue according to homogenizer manufacturer instructions.
3. Transfer extracts to microcentrifuge tubes and centrifuge for 20 min at 13,000 rpm (4°C).

Note: If the supernatant appears to be cloudy, transfer the supernatants to a clean tube, centrifuge again at 13,000 rpm for 20 minutes at 2-8°C. If the supernatant is still not clear, store the lysate at -20°C for 20 minutes. Remove from the freezer, immediately centrifuge at 13,000 rpm for 20 minutes at 2-8°C.

4. Transfer supernatant to a clean tube and store at -80°C.

4) Determine the total protein concentration

For optimal biotin labeling, it is necessary to determine the protein concentration in the cell/tissue lysate. We recommended using a BCA total protein assay (e.g., Pierce, Catalog # 23227).

B. Handling the Array Membranes

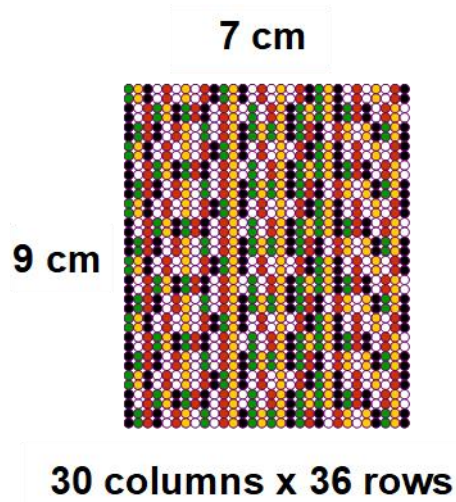
- Always use forceps to handle membranes and grip the membranes by the edges only.
- Never allow membranes to dry during the experiment.
- Avoid touching membranes with hands or any sharp tools.

C. Incubations of Antibody Array

- Completely cover membranes with sample or buffer during incubation and cover the Plastic Incubation Tray with the lid to avoid drying.
- Avoid foaming during incubation steps.
- Perform all incubation and wash steps under gentle rotation.

- Several incubation steps such as step 3 (sample incubation) or step 7 (HRP-Conjugated Streptavidin incubation) may be done at 4 °C overnight.

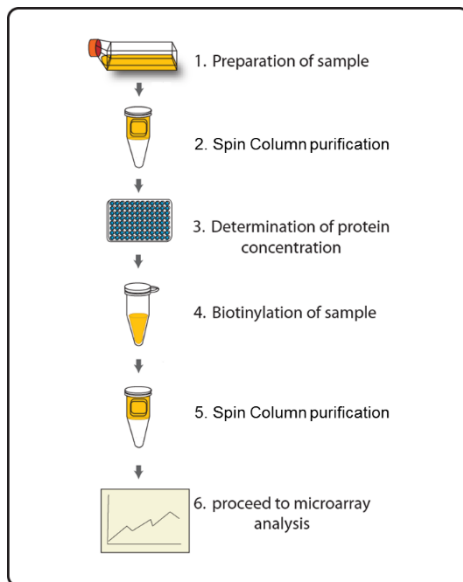
D. Layout of Array Membrane



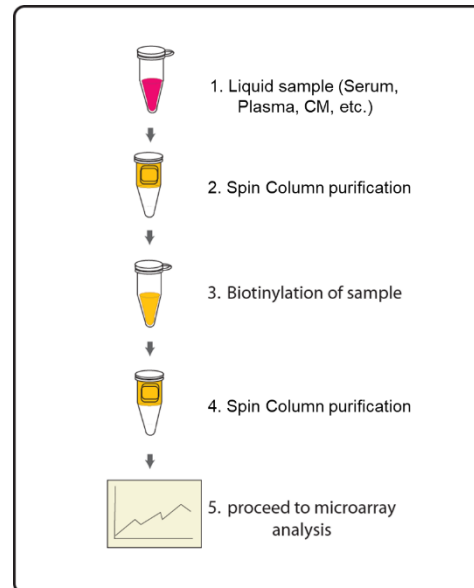
IV. Protocol

Assay Diagram

1. Cell/tissue lysates



2. Serum, plasma, body fluid, or Cell culture supernatants



A. Sample purification

Note: This step removes the low molecular weight amine derivatives or unwanted buffer from samples to ensure the quality biotinylation in Steps 5–7.

1. Twist to remove the bottom closure of the Spin column and loosen the cap (Do not remove).
2. Place the Spin column into a 50 ml conical collection tube, centrifuge at 1,000 x g for 3 minutes to remove the storage buffer. Discard the flow-through.
3. Wash the column three times with 5 ml ultrapure water (ddH₂O) or 1xPBS (pH8.0) each, centrifuge 1,000 x g for 3 minutes to remove the

flow-through. Blot the bottom of the column to remove excess liquid, and transfer device to a new collection tube.

4. Apply sample on top of the resin within the next few minutes. Centrifuge at 1,000 x g for 3 minutes to collect the flow-through that contains sample. The recommended sample dilution as following:

- *Culture Media (CM): 3.5 ml neat supernatant*
- *Serum/Plasma: 50 µl serum/plasma in 3.5 ml labeling buffer*
- *Cell/tissue lysate: 100 µg lysate in 1 ml labeling buffer*

Note: Each labelled sample volume is enough for at least 6 membranes following the protocol below.

Note: The maximal sample volume is 4 ml for each Spin Column. Do not load over 4 ml of sample into a Spin Column.

B. Biotin-Labeling the Sample

Note: Amines (e.g., Tris, glycine) and azides quench the biotinylation reaction. Avoid contaminating samples with these chemicals prior to biotinylation.

5. Immediately before use, prepare Labeling Reagent. Briefly spin down the Labeling Reagent tube (Item B). Add 100 µl Labeling Buffer into the tube, then pipette up and down or vortex slightly to dissolve the lyophilized reagent.
6. Add Labeling Reagent to the sample tube. Incubate the reaction solution at RT with gentle rocking or shaking for 30 min. Mix the reaction solution by gently tapping the tube every 5 minutes.
 - a. For labeling cell culture supernatants: Add 80 µl of Labeling Reagent into the sample tube (for 3.5 ml supernatant).
 - b. For labeling serum or plasma: Add 80 µl of Labeling Reagent Solution into the sample tube (for 50 µl serum/plasma *in 3.5 ml labeling buffer*).

- c. For labeling cell or tissue lysates: Add 8 μ l of Labeling Reagent Solution into the sample tube (for 100 μ g lysate *in 1 ml labeling buffer*).
- d. For all other body fluid: Add 2 μ l of Labeling Reagent Solution per 100 μ g sample to be labelled.

Note: The addition of Labeling Reagent volume is based upon the sample amount used in Step 4. If more or less amount sample is labelled, adjust this volume proportionally.

7. Add 5 μ l Stop Solution (Item D) into each reaction tube. Using a new spin column, repeat Steps 1-4 of section A. Sample Purification to remove the excess non-reacted biotin reagent from each sample.

Note: Biotinylated samples can be stored at -20°C or -80°C until you are ready to proceed with the assay.

C. Blocking and Incubations

8. Place each membrane printed side up into a Plastic Incubation Tray (provided). 1 membrane per tray.

Note: The printed membrane will have a “-” mark in the upper left corner of the membrane.

Note: Up to 4 membranes can be incubated together within one tray with proportional amount of reaction buffer. Rotate the membrane sequence at least once during sample incubation if more than one membrane is incubated in one tray.

9. Dilute 4X Blocking Buffer (Item F) with deionized or distilled water to prepare the 1X Blocking Buffer. Add 6 ml of 1X Blocking Buffer to each

membrane and cover with the lid. Incubate at room temperature with gentle shaking for 1 hour.

10. Aspirate the Blocking Buffer from each tray. Add 6 ml of diluted sample onto each membrane and cover with the lid. Incubate at room temperature with gentle shaking for 2 hours.

Note: It is recommended to use 10-20 folds diluted biotin-labeled culture supernatant, 10-20 folds diluted biotin-labeled serum/plasma, 100 folds diluted biotin-labeled cell/tissue lysate, or 10-20 folds for other body fluids. Dilute sample using 1X Blocking Buffer. The optimal concentration of sample used will depend on the abundance of target proteins. The samples can be concentrated if the overall signals are too weak. If the overall signals are too strong, the sample can be diluted further.

Note: Incubation may be done at room temperature with gentle shaking for 2 hours or overnight at 4°C.

11. Dilute 20X Wash Buffer 1 (Item G) with deionized or distilled water to prepare the 1X Wash Buffer 1. Aspirate the samples from each tray and then wash by adding 20 ml of 1X Wash Buffer 1 at room temperature with gentle shaking (5 min per wash). Repeat the wash 2 more times for a total of 3 washes.
12. Aspirate the 1X Wash Buffer 1 from each tray. Dilute 20X Wash Buffer 2 (Item H) with deionized or distilled water to prepare the 1X Wash Buffer 2. Wash 3 times with 20 ml of 1X Wash Buffer 2 at room temperature with gentle shaking.
13. Aspirate the 1X Wash Buffer 2 from each tray.
14. Prepare the HRP-Conjugated Streptavidin. Briefly spin down the tube containing the 500X HRP-Conjugated Streptavidin (Item I)

immediately before use. Dilute the 500X HRP-Conjugated Streptavidin with 1X Blocking Buffer to prepare the 1X HRP-Conjugated Streptavidin. Pipette up and down to mix gently. Add 6 ml of 1X HRP-Conjugated Streptavidin to each membrane.

Note: Ensure that the vial containing the 500X HRP-Conjugated Streptavidin is mixed well before use, as precipitation can form during storage.

15. Incubate at room temperature with gentle shaking for 2 hours.

Note: incubation may be done overnight at 4 °C.

16. Wash as directed in steps 11 through 13.

D. Detection

Note: Do not let the membrane dry out during detection. The detection process must be completed within 40 minutes without stopping.

17. For detection of 2 membranes, add 4.2 ml of Detection Buffer C and 4.2 ml of Detection buffer D into a tube and mix both solutions. Drain off excess wash buffer. Place membrane antibody side up (There is a “-” symbol on the top left corner of each membrane) on a clean plastic plate or its cover (provided in the kit). Pipette 4 ml of the mixed Detection Buffers onto each membrane and incubate at room temperature for 2 minutes with gentle shaking. Ensure that the detection mixture is evenly covering the membrane without any air bubbles.
18. Gently place the membrane with forceps (antibody side up) on a plastic sheet (provided) and cover the membrane with another plastic sheet. Gently smooth out any air bubbles. Avoid using pressure on the membrane. Work as quickly as possible.

19. The signal can be detected directly from the membrane using a chemiluminescence imaging system or by exposing the array to x-ray film (we recommend using Kodak X-Omat™ AR film) with subsequent development. Expose the membranes for 40 seconds. Then re-expose the film according to the intensity of signals. If the signals are too strong (background too high), reduce the exposure time (e.g., 5–30 seconds). If the signals are too weak, increase the exposure time (e.g., 5–20 min or overnight) or re-incubate membranes overnight with 1X HRP-Conjugated Streptavidin, and repeat detection on the second day.

20. Save membranes at –20 °C to –80 °C for future reference.

V. Antibody Array Maps

A. RayBio® Rat Antibody Array L-2, L-3, and L-4 Array Map

	1	2	3	4	5	6	7	8	9	10	11	12	13	14	15	16	17	18	19	20	21	22	23	24	25	26	27	28	29	30
1	POS1	POS2	POS3	Blank	1	2	3	4	5	6	7	8	9	10	11	12	13	14	15	16	17	18	19	20	21	22	23	24	25	26
2	POS1	POS2	POS3	Blank	1	2	3	4	5	6	7	8	9	10	11	12	13	14	15	16	17	18	19	20	21	22	23	24	25	26
3	Blank	Blank	Blank	27	28	29	30	31	32	33	34	35	36	37	38	39	40	41	42	43	44	45	46	47	48	49	50	51	52	53
4	Blank	Blank	Blank	27	28	29	30	31	32	33	34	35	36	37	38	39	40	41	42	43	44	45	46	47	48	49	50	51	52	53
5	54	55	56	57	58	59	60	61	62	63	64	65	66	67	68	69	70	71	72	73	74	75	76	77	78	79	80	81	82	83
6	54	55	56	57	58	59	60	61	62	63	64	65	66	67	68	69	70	71	72	73	74	75	76	77	78	79	80	81	82	83
7	84	85	86	87	88	89	90	91	92	93	94	95	96	97	98	99	100	101	102	103	104	105	106	107	108	109	110	111	112	113
8	84	85	86	87	88	89	90	91	92	93	94	95	96	97	98	99	100	101	102	103	104	105	106	107	108	109	110	111	112	113
9	114	115	116	117	118	119	120	121	122	123	124	125	126	127	128	129	130	131	132	133	134	135	136	137	138	139	140	141	142	143
10	114	115	116	117	118	119	120	121	122	123	124	125	126	127	128	129	130	131	132	133	134	135	136	137	138	139	140	141	142	143
11	144	145	146	147	148	149	150	151	152	153	154	155	156	157	158	159	160	161	162	163	164	165	166	167	168	169	170	171	172	173
12	144	145	146	147	148	149	150	151	152	153	154	155	156	157	158	159	160	161	162	163	164	165	166	167	168	169	170	171	172	173
13	174	175	176	177	178	179	180	181	182	183	184	185	186	187	188	189	190	191	192	193	194	195	196	197	198	199	200	201	202	203
14	174	175	176	177	178	179	180	181	182	183	184	185	186	187	188	189	190	191	192	193	194	195	196	197	198	199	200	201	202	203
15	204	205	206	207	208	209	210	211	212	213	214	215	216	217	218	219	220	221	222	223	224	225	226	227	228	229	230	231	232	233
16	204	205	206	207	208	209	210	211	212	213	214	215	216	217	218	219	220	221	222	223	224	225	226	227	228	229	230	231	232	233
17	234	235	236	237	238	239	240	241	242	243	244	245	246	247	248	249	250	251	252	253	254	255	256	257	258	259	260	261	262	263
18	234	235	236	237	238	239	240	241	242	243	244	245	246	247	248	249	250	251	252	253	254	255	256	257	258	259	260	261	262	263
19	264	265	266	267	268	269	270	271	272	273	274	275	276	277	278	279	280	281	282	283	284	285	286	287	288	289	290	291	292	293
20	264	265	266	267	268	269	270	271	272	273	274	275	276	277	278	279	280	281	282	283	284	285	286	287	288	289	290	291	292	293
21	294	295	296	297	298	299	300	301	302	303	304	305	306	307	308	309	310	311	312	313	314	315	316	317	318	319	320	321	322	323
22	294	295	296	297	298	299	300	301	302	303	304	305	306	307	308	309	310	311	312	313	314	315	316	317	318	319	320	321	322	323
23	324	325	326	327	328	329	330	331	332	333	334	335	336	337	338	339	340	341	342	343	344	345	346	347	348	349	350	351	352	353
24	324	325	326	327	328	329	330	331	332	333	334	335	336	337	338	339	340	341	342	343	344	345	346	347	348	349	350	351	352	353
25	354	355	356	357	358	359	360	361	362	363	364	365	366	367	368	369	370	371	372	373	374	375	376	377	378	379	380	381	382	383
26	354	355	356	357	358	359	360	361	362	363	364	365	366	367	368	369	370	371	372	373	374	375	376	377	378	379	380	381	382	383
27	384	385	386	387	388	389	390	391	392	393	394	395	396	397	398	399	400	401	402	403	404	405	406	407	408	409	410	411	412	413
28	384	385	386	387	388	389	390	391	392	393	394	395	396	397	398	399	400	401	402	403	404	405	406	407	408	409	410	411	412	413
29	414	415	416	417	418	419	420	421	422	423	424	425	426	427	428	429	430	431	432	433	434	435	436	437	438	439	440	441	442	443
30	414	415	416	417	418	419	420	421	422	423	424	425	426	427	428	429	430	431	432	433	434	435	436	437	438	439	440	441	442	443
31	444	445	446	447	448	449	450	451	452	453	454	455	456	457	458	459	460	461	462	463	464	465	466	467	468	469	470	471	472	473
32	444	445	446	447	448	449	450	451	452	453	454	455	456	457	458	459	460	461	462	463	464	465	466	467	468	469	470	471	472	473
33	474	475	476	477	478	479	480	481	482	483	484	485	486	487	488	489	490	491	492	493	494	495	496	497	498	499	500	Blank	Blank	Blank
34	474	475	476	477	478	479	480	481	482	483	484	485	486	487	488	489	490	491	492	493	494	495	496	497	498	499	500	Blank	Blank	Blank
35	Blank	Blank	Blank	Blank	Blank	Blank	Blank	Blank	Blank	Blank	Blank	Blank	Blank	Blank	Blank	Blank	Blank	Blank	Blank	Blank	Blank	Blank	Blank	Blank	Blank	Blank	Blank	Blank	Blank	Blank
36	Blank	Blank	Blank	Blank	Blank	Blank	Blank	Blank	Blank	Blank	Blank	Blank	Blank	Blank	Blank	Blank	Blank	Blank	Blank	Blank	Blank	Blank	Blank	Blank	Blank	Blank	Blank	Blank	Blank	Blank

VI. Antibody Array Target Lists

A. RayBio® Rat Antibody Array L-2 Target List

Number	Name	Number	Name	Number	Name	Number	Name	Number	Name	Number	Name	Number	Name
1	11b-HSD1	73	CD1d1	145	DYRK2	217	GLRX3	289	IPP2	361	Notch-1	433	SEMA4D
2	14-3-3 epsilon	74	CD200	146	DYRK3	218	Glyoxalase1	290	Islet-1	362	Notch-2	434	SEMA5A
3	14-3-3 eta	75	CD22	147	ECM1	219	Glyoxalase2	291	Jagged1	363	Notch-3	435	SEMA7A
4	14-3-3 sigma	76	CD226	148	EEA1	220	Glypican3	292	JAM-A	364	NPC2	436	SerpinF2
5	14-3-3 theta	77	CD27	149	EFNA1	221	gp130	293	JAM-C	365	NRAGE	437	SerpinA1
6	4-1BB	78	CD276	150	EFNB1	222	GPT	294	JNK1	366	Nrf2	438	SerpinE1
7	A2B5	79	CD300f	151	EGF	223	Gpt2	295	JNK2	367	NRXN1 beta	439	SerpinF1
8	ACACA	80	CD300LG	152	EGFR	224	GPX1	296	KDR	368	Olfactomedin-1	440	SH2B1
9	ACTC1	81	CD31	153	eIF5A	225	GPX3	297	Keap1	369	OLR1	441	SHIP2
10	Actin	82	CD34	154	EMP	226	Granzyme B	298	Kirrel3	370	Osteocalcin	442	SHIP-1
11	Activin R2A	83	CD38	155	ENO1	227	GRB2	299	KLKB1	371	OX40	443	SIGNR1
12	ADAM10	84	CD39L1	156	Ecotaxin	228	GRIN2A	300	KNG1	372	p27	444	SIRP alpha
13	ADAMTS1	85	CD4	157	EphA5	229	GRK1	301	LAIR1	373	p38 gamma	445	SLAMF1
14	Adiponectin	86	CD47	158	EphB1	230	GRK2	302	LAR	374	p53	446	SLC4A1
15	aFGF	87	CD48	159	EphB6	231	GRK5	303	LAYN	375	p55PIK	447	Slit3
16	Agrin	88	CD5L	160	Ephrin-A2	232	GRO alpha	304	LDHA	376	PAK1	448	Smad3
17	AIF	89	CD6	161	Ephrin-B2	233	GRP75	305	Legumain	377	PAK7	449	Smad7
18	AK1	90	CD63	162	ER alpha	234	HAAO	306	Leptin	378	Pax7	450	SMC1
19	ALCAM	91	CD68	163	ERBB2	235	HABP1	307	Leptin Receptor	379	P-Cadherin	451	Sortilin
20	ALK-7	92	CD79B	164	ERBB3	236	HGF	308	LIF	380	PCDH-17	452	SOST
21	Alpha-Actinin1	93	CD8 alpha	165	Erythropoietin	237	HIF-1 alpha	309	LIFR	381	PCK1	453	SOX1
22	Alpha-Synuclein	94	CD83	166	Ets-1	238	HO-2	310	ULRA5	382	PDGF-BB	454	SOX10
23	Ameloblastin	95	CD86	167	Ezrin	239	HPRG	311	ULRC2	383	PDGFRA	455	SOX2
24	AMPK alpha 2	96	CD93	168	F2	240	HPX	312	Lipocalin-2	384	Pentraxin 2	456	SP-D
25	Androgen R	97	CDC25B	169	F3	241	HSP20	313	LMW-PTP	385	Peroxiredoxin 6	457	Src
26	ANGPT1	98	CDC37	170	FABP1	242	HSP27	314	LPHN3	386	PFKM	458	STAT3
27	Annexin A1	99	CDH1	171	FABP2	243	HSP40	315	LRP-4	387	PGC	459	Syndecan-2
28	Annexin A4	100	CDH2	172	FABP3	244	HSP60	316	LTBR	388	plgR	460	Syntaxin 1A
29	Annexin A7	101	CDNF	173	FABP4	245	HSP70	317	LTF	389	PIM2	461	TAF5
30	Annexin V	102	CES1	174	FABP5	246	HSP90	318	Lyn	390	PKA C a/b	462	Talin1
31	APE	103	CF XIV	175	FAK	247	HSPAB	319	MAG	391	PKC	463	TCK-1
32	APLP-1	104	CHMP2B	176	FCAR	248	HSPH1	320	Matrilin-3	392	PKC a	464	TC-PTP
33	APRIL	105	Chordin	177	FCGR1	249	HtrA2	321	MBL-2	393	PKC i/j/z	465	TDP-43
34	Arginase 1	106	CIB1	178	FETUB	250	IDS	322	MCAM	394	PKM2	466	TF
35	ART4	107	CLEC4A2	179	FGF-12	251	IFNA5	323	MCP-3	395	PLAUR	467	TGF-beta RIII
36	ASAH2	108	CLEC4E2	180	FGF-21	252	IFN-alpha	324	MEK2	396	Plixin A4	468	TGM2
37	B3GNT2	109	Clusterin	181	FGFR4	253	IFN-gamma	325	MIF	397	PON3	469	THBD
38	BAFF	110	CNTF	182	Fgr	254	IFN-gamma R2	326	MIG	398	POR	470	Thioredoxin-2
39	BAK	111	COS	183	Fibromodulin	255	IGF-1	327	MIP-1 alpha	399	PP2A CS	471	TIE-2
40	BCAM	112	COLEC12	184	FKBP12	256	IGFBP-5	328	MIP-3 beta	400	PP2C alpha	472	TIM-1
41	Bcl-10	113	Complexin-2	185	FKBP12.6	257	IGSF8	329	MKK6	401	PPA1	473	TNF alpha
42	Bcl-2	114	Contactin-1	186	FKBP13	258	IkB-beta	330	MMP-2	402	PP2R4	474	TNF-R1
43	BCL-W	115	Contactin-2	187	FKBP25	259	IKK	331	MMP-8	403	PRDX 2	475	TNFRSF11A
44	Bcl-xL	116	Contactin-4	188	FKBP51	260	IL-1 beta	332	MMP-9	404	PRDX1	476	TNFSF9
45	beta 2-M	117	Contactin	189	FKBP52	261	IL-1 RA	333	MOG	405	PRDX4	477	Tollip
46	beta IG-H3	118	CPA1	190	FLIP	262	IL-10	334	MP1	406	Prf-1	478	TPT1
47	bFGF	119	CPA2	191	FLT1	263	IL-11 R alpha	335	MPO	407	PRL-3	479	TRAF-2
48	BID	120	CPB1	192	Flt-3 Ligand	264	IL-12 p70	336	MST1	408	PRLBA4	480	TRAF-3
49	BIK	121	CRELD1	193	Follistatin	265	IL-13 Ra2	337	NCAM-1	409	PROCR	481	Transgellin
50	BLVRB	122	CRELD2	194	FOLR1	266	IL-15 Ra	338	NCR3	410	Prolactin	482	TREM-1
51	BMP-2	123	CrkL	195	FRK	267	IL-17 RC	339	NEDD4	411	Properdin	483	TRHDE
52	BMP-7	124	CRP	196	FRS2	268	IL-18	340	NEDD8	412	PSAP	484	TrkA
53	B-raf	125	CRYAB	197	GABRA4	269	IL-18 Bp c	341	Nephrin	413	PSMA1	485	TrkB
54	BST1	126	CSF1R	198	GAD1	270	IL1 R1	342	Nestin	414	PSMA2	486	TrkC
55	BTLA	127	CTACK	199	Galectin-1	271	IL1 R2	343	Netrin-1	415	PTK7	487	TWEAK R
56	C4.4A	128	CTGF	200	Galectin-3	272	IL-2	344	Neurexophilin-1	416	PTP1B	488	UCH-L1
57	Cadherin-4	129	CTHRC1	201	Galectin-4	273	IL-2 Ra	345	Neuritin	417	PVR	489	UCH-L3
58	CADM3	130	CTLA4	202	GAPDH	274	IL-2 RG	346	Neurocan	418	PVRL2	490	UNC5H1
59	Calcineurin A	131	Cubilin	203	Gas 1	275	IL-21	347	Neurofascin	419	RalA	491	UNC5H2
60	Calcineurin B	132	CXCL10	204	GDF-3	276	IL-22	348	Neurogranin	420	RALT	492	VAMP-2
61	Caspr 2	133	CXCL16	205	GDF-8	277	IL-23 p19	349	Neuroigin-1	421	RANTES	493	VHR
62	Catalase	134	Cyclophilin A	206	GDNF	278	IL-31	350	Neuroigin-2	422	RBBP4	494	Vinculin
63	Cathepsin B	135	Cyclophilin B	207	GFAP	279	IL-4	351	Neuropilin-1	423	RBP4	495	VSIG1
64	Cathepsin C	136	Cystatin C	208	GFRA1	280	IL-4 R	352	Neuropilin 65	424	Reg III	496	WFDC2
65	Cathepsin E	137	Cytochrome-C	209	GFRA2	281	IL-6	353	NFATC3	425	Reg3B	497	Wnt5a
66	Cathepsin L	138	Decorin	210	GFRA3	282	IL-7	354	NF-L	426	Renin 1	498	XIAP
67	Cathepsin X	139	DEP-1	211	GGT1	283	IL-7 Ra	355	NM23-H1/H2	427	RHD	499	XPNPEP2
68	Caveolin-2	140	DGK-epsilon	212	GH	284	IL-9	356	nNOS	428	ROBO1	500	Zyxin
69	CKK-A R	141	DHFR	213	GIT1	285	IL-9 R	357	NNUP85	429	ROCK2		
70	CCL26-Like	142	DHX-3	214	GITR	286	ILK	358	Noggin	430	SDC1		
71	CD13	143	DLL1	215	GLA	287	ILKAP	359	Nogo-A	431	Secretagogin		
72	CD14	144	DOK7	216	GLG1	288	IMPDH1	360	Nope	432	SEMA4C		

B. RayBio® Rat Antibody Array L-3 Target List

Number	Name	Number	Name	Number	Name	Number	Name	Number	Name	Number	Name	Number	Name
1	A2M	73	CHGB	145	FGFR5	217	IL-1 R4	289	Neurturin	361	Quiescin Q6	433	TCP1
2	AARE	74	Chk1	146	FGG	218	IL-1 R6	290	Nidogen-1	362	RAGE	434	TDIF2
3	ABCF1	75	Chymase	147	FH	219	IL-11	291	Nidogen-2	363	Ras	435	TECK
4	ACAT1	76	CINC-2	148	Fibronectin	220	IL-12 p40	292	NIT2	364	RELN beta	436	Tenascin X
5	Activin A	77	CINC-3	149	Ficolin-2	221	IL-12 RB1	293	NNT	365	Resistin	437	TFF1
6	ADAMTS10	78	Cingulin	150	FLG2	222	IL-13	294	NOV	366	REV3L	438	TFF2
7	ADAMTS15	79	CIP29	151	FOXP3	223	IL-15	295	NPB	367	Rheb	439	TGF-beta 1
8	ADAMTSL2	80	Claudin-3	152	Fractalkine	224	IL-16	296	NPTXR	368	RNASE6	440	TGF-beta 2
9	Aggrecan	81	Claudin-4	153	Frizzled-1	225	IL-17A	297	NR3C3	369	ROB4	441	TGF-beta 3
10	AHCY	82	CNPY2	154	Frizzled-4	226	IL-17C	298	Nrf1	370	ROR1	442	TGF-beta R1
11	AHSG	83	CNTRF	155	Frizzled-5	227	IL-17D	299	OCT3/4	371	RP1	443	TGF-beta R2
12	Akt2	84	COL19A1	156	Frizzled-6	228	IL-19	300	Orexin A	372	RPL12	444	TIMP-1
13	Albumin	85	COTL1	157	Frizzled-7	229	IL-2 R beta	301	OSCAR	373	RPL23A	445	TIMP-2
14	AMPKa1	86	CPE	158	FSTL1	230	IL-24	302	OSM	374	RPLO	446	Titin
15	ANGPTL2	87	CRADD	159	Galanin	231	IL-27	303	Osteoactivin	375	RPS13	447	TK1
16	ANGPTL3	88	CREB	160	GASP-1	232	IL-28B	304	Osteoadherin	376	RPS14	448	TLR1
17	ANKRD9	89	CRF21	161	GASP-2	233	IL-3	305	Osteoprotegerin	377	RPS15A	449	TLR3
18	ANXA6	90	CRHBP	162	G-CSF R	234	IL-3 R beta	306	p130Cas	378	RPS23	450	TLR4
19	APBA2	91	CrkRS	163	GDF-15	235	IL-5	307	p21	379	RPS3A	451	TMEFF1
20	ApoA1	92	CRTAC1	164	GDF-5	236	IMP2	308	P4HB	380	RPS5	452	TMEFF2
21	ApoA2	93	CRTAM	165	GFRA4	237	INSL3	309	Pappalysin-1	381	RPS8	453	TMEM223
22	ApoB	94	CRTH-2	166	GHR	238	Inulin	310	PCAP	382	RPS9	454	TOMM70A
23	ApoE	95	Cryptic	167	GKN1	239	I-TAC	311	PCPE-1	383	RREB1	455	TPIS
24	ARHGAP1	96	CSE1L	168	GLI-2	240	Jak2	312	PD-1	384	RSF1	456	TPP1
25	ATG5	97	CSK	169	GLI2	241	Kallikrein 10	313	PD-ECGF	385	RUSC1	457	TRADD
26	ATPG	98	CTNND1	170	Glut1	242	Kallikrein 11	314	PDGF-AA	386	S100A10	458	TRAIL R2
27	B3GAT1	99	CXCR2	171	Glut2	243	Kallikrein 5	315	PDGF-C	387	S100A11	459	TRAM
28	B4GalT1	100	CXCR4	172	Glut4	244	Kallikrein 6	316	PDGF-D	388	S100A9	460	TRIM14
29	B7-1	101	CXCR7	173	Glut5	245	KIF5B	317	PDGFRB	389	S-100b	461	Tropomyosin 3
30	B7-H2	102	Cyclin D1	174	GM2A	246	LAMA5	318	PDLIM5	390	SBP-1	462	TRRAP
31	BAFF R	103	Cyclophilin F	175	GM-CSF	247	LAMP	319	PDZD2	391	SCF	463	Trypsinogen-2
32	Bax	104	Cystatin A	176	GP2	248	LASP1	320	PENK	392	SCF R	464	TSLP
33	BDNF	105	Cystatin B	177	gp340	249	LBP	321	Pentraxin-3	393	SDF4	465	TSP-1
34	beta-NGF	106	Cystatin D	178	GPD1	250	Lefty-1	322	Perilipin-3	394	Septin-7	466	TSP-2
35	BLAME	107	Cystatin E	179	GPR-39	251	Lefty-A	323	Peroxiredoxin-3	395	SERBP1	467	TSP-4
36	BLMH	108	Cystatin S	180	Granzyme A	252	LHPP	324	PF4	396	Serpin A3	468	TTF1
37	BMP-1	109	DAK	181	Granzyme M	253	LIX	325	PFAS	397	Serpin A5	469	TUBA6
38	BMP-15	110	DCI	182	GRHPR	254	LPS	326	PFDN6	398	Serpin B5	470	TWF2
39	BMP-9	111	DCXR	183	GRP	255	LRG1	327	PHGDH	399	Serpin C1	471	TXNDC15
40	BNIP 2	112	DLL4	184	GSK-3 beta	256	LRP-6	328	Piccolo	400	SET	472	TXNDC5
41	BOLA2	113	DMGDH	185	GSN	257	L-Selectin	329	PIK3R2	401	sFRP-4	473	TYRO10
42	BTC	114	DSCAM	186	GSR	258	LUZP1	330	PINCH1	402	SH3BGR13	474	UBC9
43	BTF3	115	DSG1	187	GSTM1	259	Lymphotactin	331	PIP4K2A	403	SHBG	475	Ubiquitin
44	C1q	116	EDA-A2	188	GSTO1	260	MadCAM-1	332	PLA2G1B	404	SHOX	476	Ubiquitin-1
45	C1s	117	EDAR	189	GULP1	261	MAN1	333	PLD4	405	Siglec-1	477	UNC45A
46	C3a	118	eEF2	190	HAI-1	262	Mcl-1	334	Plexin B2	406	SLC38A10	478	UNC5H4
47	C5a	119	EG-VEGF	191	Haptoglobin	263	MCP-1	335	PLGF-2	407	SLURK1	479	uPA
48	CA1	120	eF4E	192	HB-EGF	264	MCP-5	336	PLS3	408	SLP1	480	URO1
49	CA2	121	EMAP-II	193	HEG1	265	MDC	337	PNP	409	SLURP1	481	USP2
50	CA3	122	Endothelin	194	Hepassocin	266	MEP1A	338	POMC	410	Smad 1	482	Uteroglobin
51	Calbindin D	123	Eotaxin-2	195	HEXB	267	Mesothelin	339	PON1	411	Smad 4	483	VAP-1
52	Cardiotrophin-1	124	EphA1	196	HGFA	268	MICB	340	PP	412	Smad 5	484	VAP-A
53	Cathepsin A	125	EphA2	197	Histone H2AY	269	MIP-3 alpha	341	PPP1CC	413	Smad 8	485	VARS
54	CCL28	126	EPHX2	198	hnRNPL	270	MIS RII	342	PRAT4B	414	Somatostatin	486	VDAC1
55	CCR3	127	Epirigulin	199	Hoxb3	271	Mitofusin 2	343	PRELP	415	SOX5	487	VEGF
56	CCR4	128	ERRa	200	HOXD11	272	MKK3	344	Prolactin R	416	SPARC	488	VEGF-B
57	CCT3	129	E-Selectin	201	HSP10	273	MKK4	345	ProSAAS	417	SPINK7	489	VEGF-C
58	CD133	130	EVC2	202	HSP47	274	MMP-10	346	Prostasin	418	SPTBN5	490	VEGFR3
59	CD23	131	Factor IX	203	HTRA1	275	MMP-13	347	Protein Z	419	SSTR2	491	VILP3
60	CD24	132	Factor V	204	HVEM	276	MMP-16	348	Prouroguanylin	420	STXB2	492	Visfatin
61	CD2AP	133	Factor VII	205	ICAM-1	277	MMP-7	349	PRR4	421	SVEP1	493	Vitronectin
62	CD30	134	Factor XII	206	ICAM-2	278	MRP 1	350	PRRC2A	422	SYK	494	WARS
63	CD40 Ligand	135	FAM3C	207	IDE	279	Multimerin 2	351	PRTN3	423	SYN1	495	WISP-1
64	CD9	136	Fas	208	IFN-beta	280	MuSK	352	P-selectin	424	TAC1	496	WISP-2
65	CD90	137	Fas Ligand	209	IFNGR1	281	MyBPC3	353	PSMB1	425	TAGLN2	497	XPD
66	CDC14	138	FGF-11	210	IGFBP-2	282	NACA1	354	PSMD2	426	TALDO	498	XPG
67	CFH	139	FGF-20	211	IGSF4C	283	NADK	355	PSMD9	427	TALDO1	499	YY1
68	CFI	140	FGF-23	212	IL-1 alpha	284	NAGPA	356	PSME1	428	Talin-2	500	ZC3H4
69	CFL1	141	FGF-9	213	IL-1 F10	285	NAPRT1	357	PTHLP	429	TARC		
70	CGA	142	FGF-BP	214	IL-1 F5	286	NeuroD1	358	PTMA	430	TARS		
71	CHCHD3	143	FGFR1	215	IL-1 F6	287	Neurolysin	359	PYY	431	TCA-3		
72	Chemerin	144	FGFR2	216	IL-1 F9	288	Neuropilin-2	360	QARS	432	Tc20		

C. RayBio® Rat Antibody Array L-4 Target List

Number	Name	Number	Name	Number	Name	Number	Name	Number	Name	Number	Name	Number	Name
1	14-3-3 beta	73	CD40	145	FCGR3A	217	IMPAD1	289	NDP1P1	361	PNUTS	433	SHIP
2	14-3-3 gamma	74	CD44	146	FCGR2	218	IMPDH2	290	Nectin-3	362	PP2A	434	SHP-2
3	A1BG	75	CD51	147	Fen 1	219	Inhibin beta	291	Nesfatin-1	363	PPM1B	435	SIGNR3
4	A1M	76	CD59	148	Filamin A	220	iNOS	292	Nesprin2	364	PPP1R9B	436	Six3
5	aAmylase	77	CDC25A	149	FKBP38	221	Intellectin-1	293	Neurogenin-2	365	PPP1R9B	437	SMAGP
6	ACE2	78	CDC25C	150	FoxA2	222	IRE1	294	Neuroglycan C	366	PRCP	438	SMOC-1
7	ACLP	79	CDK1	151	FoxP3	223	IRS1	295	NGFR	367	PRDX5	439	SMURF2
8	ACTN2	80	CDK2	152	FPRP	224	IRS2	296	Nicalin	368	PRG2	440	SNAP25
9	ADAM17	81	CEACAM1	153	FSTL4	225	ITGA8	297	Ninjurin-2	369	PRNP	441	SOD1
10	ADAM9	82	CELF1	154	FUCA1	226	ITGB4BP	298	NP1P1	370	Prohibitin	442	SOD2
11	ADNP	83	CE33	155	Fyn	227	ITGB5	299	NKX2.2	371	Prss21	443	SOD-3
12	ADRB2	84	CHORDC1	156	G3BP	228	ITGB6	300	NLRP10	372	PSD-95	444	SPOCK2
13	AFP	85	CKB8	157	G6PD	229	ITPR3	301	NPC1	373	PTEN	445	SQSTM1
14	AGT	86	CLEC1B	158	GABAB R1	230	JAB1	302	NR3C1	374	PTGDS	446	SR-AI
15	Akt1	87	CLEC5A	159	GABAB R2	231	Jak1	303	NrCAM	375	PTGES3	447	ST3GAL2
16	ALDH2	88	COL1A1	160	GABRA1	232	JIP1	304	NSE	376	PTP gamma	448	STAT5b
17	ALOX5	89	COL6A1	161	GABRA5	233	Kallikrein 7	305	NT5E	377	PTP-MEG2	449	STAT6
18	alpha 2u-Globulin	90	COLEC10	162	GALNT2	234	KCNB2	306	NUAK1	378	PTPRM	450	ST11
19	ALPP	91	Comptaxin-1	163	gamma Catenin	235	KCNC1	307	Nucleostemin	379	PTPRU	451	STM11
20	AMBP	92	Contactin-3	164	GATE-16	236	KIAA1967	308	NXPH3	380	PVRL1	452	STK3
21	AMH	93	COP21	165	GBL	237	Klotho beta	309	Oligodendrocyte Marker O1	381	QDPR	453	Substance P
22	Amphiphysin	94	CPEB3	166	GDF1	238	KMO	310	Oligodendrocyte Marker O4	382	Rab11A	454	SUMO2
23	AMPK beta 1	95	CPM	167	GDF7	239	KOR	311	Oncomodulin	383	Rab27a	455	SUSD3
24	ANG-2	96	CSNK1A	168	GDI1	240	KPNB1	312	OPRM1	384	RAB7A	456	Synaptotagmin-1
25	Angiogenin	97	CSNK1D	169	Gephyrin	241	Kynureninase	313	Osteopontin	385	RAC1	457	Syndecan-3
26	Annexin A11	98	CSNK1E	170	GLUD1	242	LAMC1	314	OV-6	386	RACK1	458	Syntaxin 1B
27	Annexin A2	99	CSNK1G	171	Glycine R	243	Laminin 5	315	P205b3	387	Rad17	459	Syntaxin 7
28	ApoH	100	CSNK2B	172	GOLGB1	244	LC3B	316	p38 alpha	388	Raf-1	460	Syntaxin 8
29	ARC	101	CSRFP	173	GPLD1	245	LHX5	317	p70S6 Kinase	389	Rap1A/B	461	Syntaxin BP1
30	ATF2	102	CXCR3	174	GPR64	246	LRG	318	PABP	390	Rap2A/B	462	T Cell Receptor alpha Chain-V
31	ATF6	103	CXCR6	175	GPX2	247	Upin 2	319	PAK4	391	RECQ4	463	TCEB2
32	ATG3	104	CYTL1	176	GPX4	248	LMAN1L	320	PAK6	392	REG4	464	TCF1 eta
33	ATM	105	DARC	177	GRB7	249	LMNA	321	Pannexin-1	393	Relaxin R1	465	Tenascin R
34	Axin-1	106	DARPP-32	178	GRP78	250	LOK	322	Park7	394	RELM gamma	466	THR
35	B7-H4	107	DDC	179	GSK-3 alpha	251	LRPAP	323	PARL	395	RGM-B	467	TGN38
36	BAG4	108	DDT	180	H6PD	252	Lumican	324	Parvalbumin	396	RGM-C	468	TH
37	BAG6	109	DDX1	181	HABP2	253	Lysozyme	325	Paxillin	397	RHOG	469	Themis
38	BAMBI	110	DEFA6	182	HAO-1	254	LYVE1	326	PCBP2	398	RBP	470	Thioredoxin-1
39	BarX1	111	DGK-gamma	183	HBB	255	MAD2L1	327	PCDH12	399	RIPK1	471	Thrombopoietin
40	BCE	112	DGK-theta	184	HCLS1	256	MafB	328	PCK2	400	RKIP	472	TLR7
41	Bcl1n 1	113	DISC1	185	HDAC2	257	MAP4K4	329	PCNA	401	RNASE4	473	TOP2B
42	beta-Actin	114	Dkk-1	186	HDAC4	258	Matrilin-4	330	PCSK9	402	RNF2	474	TOR
43	beta-1 Tubulin	115	Dkk-2	187	HHEX	259	MBP	331	PDAP1	403	ROCK1	475	TRIM63
44	BMX	116	DOCK1	188	HIBADH	260	MCHR1	332	PDC05	404	RPL10A	476	Troponin T
45	BNIP3L	117	DOT1L	189	HIF-2 alpha	261	M-CSF	333	PDC06	405	RPL11	477	TRP14
46	BOK	118	DRAK2	190	Histamine H3 R	262	MDGA2	334	PDHX	406	RPL22	478	TRPV1
47	Brevican	119	DRAXIN	191	Histone H1.3	263	MDH1	335	PDK-1	407	RPLP2	479	TRXR1
48	CA14	120	DSG2	192	Histone H2AX	264	MDM2	336	PDK-1	408	RPS11	480	Trypsin 3
49	Cadherin-15	121	DYRK1A	193	HMG1	265	MEK1	337	PDK2	409	RPS19	481	Trypsin Pan
50	Cadherin-8	122	Dystroglycan	194	HMG2	266	MEK2	338	Perilipin-1	410	RPS25	482	TSC22
51	CALD1	123	EDN	195	HMOX1	267	MESDC2	339	PGAM2	411	RPS4X	483	TSH
52	Calretinin	124	EFEMP2	196	HN1	268	Metallothionein	340	PGK1	412	RPS6	484	TXNDC4
53	CaM Kinase II	125	EGLN1	197	hnRNP G	269	mGluR1	341	PGLS	413	RRAS2	485	UBASH3B
54	CaMKK alpha	126	EIF3D	198	hnRNP U	270	mGluR2/3	342	PGM1	414	RSK1	486	UBE2N
55	CapG	127	ELAVL1	199	HOMER1	271	mGluR5	343	PGRS-S	415	RSK2	487	UCRB
56	CART	128	Endoglin	200	HP1BP3	272	MIB1	344	PIK3R1	416	RTN1-A	488	URDD
57	Cathepsin G	129	Endophilin A1	201	HPRT	273	MIOS	345	PIWIL2	417	RYK	489	VAP-B
58	Caveolin-1	130	Endorepellin	202	HS6ST3	274	MIP-1 beta	346	PKA RI beta	418	SC35	490	VE-Cadherin
59	CBP	131	ENSA	203	HSP90B1	275	MKP-3	347	PKC beta 1	419	SCGB3A1	491	Versican
60	CCBL1	132	EPCAM	204	HSPA2	276	MLK4	348	PKC gamma	420	SCGF	492	Vimentin
61	CCR2	133	EphA3	205	HSPB8	277	MN1	349	PKLR	421	SEC13	493	WNK1
62	CCR6	134	Ephrin-B3	206	IBP160	278	MPP5	350	PKN2	422	SECISBP2	494	WNK2
63	CCR8	135	ERBB4	207	ICAM-5	279	M-Ras	351	PLA2G2A	423	SEMA3F	495	WT1
64	CCR9	136	ERK1	208	IKK alpha	280	MSHG	352	PLC-beta 4	424	SENP8	496	WWOX
65	CD106	137	ERK2	209	IKK gamma	281	Musashi-1	353	PLC-gamma 1	425	Serpin A12	497	XPB
66	CD161	138	ERK4	210	IL-12 R beta 2	282	MyD88	354	Plexin A1	426	Serpin A3N	498	YAP1
67	CD164	139	FAIM3	211	IL-17F	283	MYHC	355	Plexin A2	427	Serpin A6	499	Yes
68	CD19	140	FANCD2	212	IL17RA	284	Myoglobin	356	Plexin A3	428	Serpin D1	500	ZBTB4
69	CD28	141	Fascin	213	IL-20RB	285	NAP1L1	357	Plexin B3	429	SerpinE2		
70	CD29	142	FASN	214	IL-21R	286	Nbs1	358	PLD2	430	SerRS		
71	CD36	143	FBPase1	215	IL-6R	287	NCAM2	359	PLTP	431	SGSH		
72	CD39L4	144	FCGR2B	216	IMPA1	288	NCOR1	360	PNPLA2	432	SHC1		

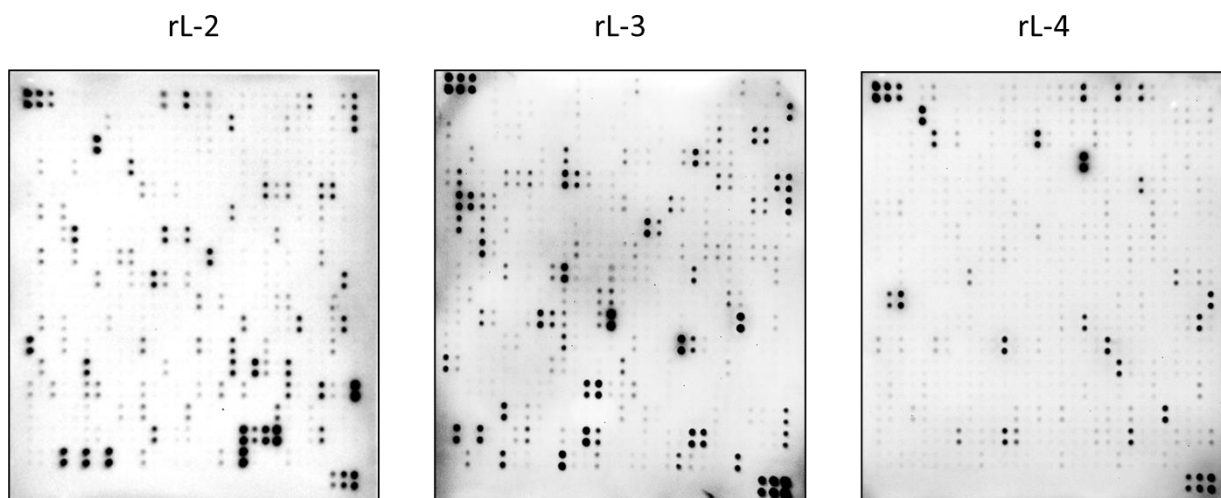
VII. Interpretation of Results:

A. Explanation of Controls Spots

To obtain optimal results using a chemiluminescence imaging system (UVP BioImaging Systems), it is suggested to try several different exposure times until the best one is determined. Then, by comparing the signal intensities, relative expression levels of the target proteins can be made. The intensities of signals can be quantified by densitometry. There are three Positive Controls (POS1, POS2, POS3) in each array. These are three levels of standardized anti-HRP antibodies, which will produce positive control signals after incubation with HRP-conjugated Streptavidin. With all other variables being equal, the Positive Control intensities will be the same for each sub-array, which allows for inter-array normalization. Antibody affinity to its target varies significantly between antibodies. The intensity detected on the array with each antibody depends on this affinity; therefore, signal intensity comparison can be performed only within the same antibody/antigen system and not between different antibodies. Some arrays may have beta-actin and GAPDH as internal controls, much as “housekeeping” genes or proteins are used to normalize results in PCR or Western blots, respectively.

B. Typical Results

The following figure shows the typical result of arrays probed with rat sample.



Note: In the absence of an external standard curve for each protein detected, there is no means of assessing absolute or relative concentrations of different proteins in the same sample using immunoassays. If you wish to obtain quantitative data (ie, concentrations of the various analytes in your samples), try using our Quantibody® Arrays as a targeted follow up experiment.

C. Background Subtraction

Once you have obtained densitometry data, it is recommended to subtract the local background and normalize to the Positive Control signals before proceeding to analysis.

D. Normalization of Array Data

To normalize signal intensity data, one sub-array is defined as "reference" to which the other arrays are normalized. This choice is arbitrary. For example, in our Analysis Tool Software (described below), the array represented by data entered in the left-most column each worksheet is the default "reference array."

You can calculate the normalized values as follows:

$$X(Ny) = X(y) * P1/P(y)$$

Where:

P1 = mean signal intensity of POS spots on reference array

P(y) = mean signal intensity of POS spots on Array "y"

X(y) = mean signal intensity for spot "X" on Array "y"

X(Ny) = normalized signal intensity for spot "X" on Array "y"

The RayBio® Analysis Tool software is available for use with data obtained using RayBio® Biotin Label-based Antibody Arrays. You can copy and paste your signal intensity data (with and without background) into the Analysis Tool, and it will automatically normalize signal intensities to the Positive Controls.

E. Threshold of Significant Difference

After subtracting background signals and normalization to Positive Controls, comparison of signal intensities between and among array images can be used to determine relative differences in expression levels of each protein between samples or groups.

Any ≥ 1.5 -fold increase or ≤ 0.65 -fold decrease in signal intensity for a single analyte between samples or groups may be considered a measurable and significant difference in expression, provided that both sets of signals are well above background (Mean background + 2 standard deviations, accuracy $\approx 95\%$).

F. Pathway Analysis of the Array Proteins

Rat antibody array L-1500 detects 1500 unique rat proteins, including most analyzed cytokines, chemokines, adipokines, extracellular matrix proteins, growth factors, angiogenic factors, proteases, enzymes, soluble and transmembrane receptors and transport proteins, adhesion molecules and other proteins. All the array proteins are provided with their Uniprot number and GeneID, which are essential for further data mining. Raybiotech offers affordable biostatistics and bioinformatics service, including data clean-up, differential expression analysis, cluster analysis, biomarker selection, pathway analysis and experimental design. See more details on the website: <https://www.raybiotech.com/biostatistics-and-bioinformatics-services>

VIII. Troubleshooting Guide

Problem	Cause	Recommendation	
Weak Signal	Taking too much time for detection	The whole detection process must be completed within 30 min.	
	Film developer does not work properly.	Fix film developer.	
	Did not mix HRP-Streptavidin well before use.	Mix tube containing HRP-Conjugated Streptavidin well before use since precipitates may form during storage.	
	Sample is too diluted	Increase sample concentration	
	Labeling reagent does not function well	Labeling reagent needs to be saved in -20C and avoid free thaw cycle. Always use fresh labeling reagent for sample labelling.	
	Other		Check if there were any contamination with any solution containing amines in biotin-labeling step.
			Slightly increase HRP concentrations.
Work as quickly as possible after mix Detection Buffer C and D.			
Uneven signal	Bubble formed during incubation	Remove bubbles during incubation.	
	Membranes were not completely covered with solution	Completely cover membranes with solution.	
	Insufficient wash	Use more stringent wash.	
High background	Exposure time is too long	Decrease exposure time.	
	Membranes dry out during experiment.	Completely cover membranes with solution during experiment. Cover tray with lid.	
	Sample is too concentrated.	Dilute sample.	

IX. Selected References

Christina Scheel et al., *Paracrine and Autocrine Signals Induce and Maintain Mesenchymal and Stem Cell States in the Breast*. Cell. 2011;145, 926–940

Lin Y, Huang R, Chen L, et al., *Profiling of cytokine expression by biotin-labeled-based protein arrays*. Proteomics. 2003, 3: 1750–1757.

Huang R, Jiang W, Yang J, et al., *A Biotin Label-based Antibody Array for High-content Profiling of Protein Expression*. Cancer Genomics Proteomics. 2010; 7(3):129–141.

Liu T, Xue R, Dong L, et al., *Rapid determination of serological cytokine biomarkers for hepatitis B–virus-related hepatocellular carcinoma using antibody arrays*. Acta Biochim Biophys Sin. 2011; 43(1):45–51.

Cui J, Chen Y, Chou W-C, et al., *An integrated transcriptomic and computational analysis for biomarker identification in gastric cancer*. Nucl Acids Res. 2011; 39(4):1197–1207.

Jun Zhong et al., *Temporal Profiling of the Secretome during Adipogenesis in Humans*. Journal of Proteome Research. 2010, 9, 5228–5238

Chowdury UR, Madden BJ, Charlesworth MC, Fautsch MP., *Proteomic Analysis of Human Aqueous Humor*. Invest Ophthalmol Visual Sci. 2010; 51(10):4921–4931.

Wei Y, Cui C, Lainscak M, et al., *Type-specific dysregulation of matrix metalloproteinases and their tissue inhibitors in end-stage heart failure patients: relationship between MMP-10 and LV remodeling*. J Cell Mol Med. 2011; 15(4):773–782.

Kuranda K, Berthon C, Lepêtre F, et al., *Expression of CD34 in hematopoietic cancer cell lines reflects tightly regulated stem/progenitor-like state*. J Cell Biochem. 2011; 112(5):1277–1285.

Toh HC, Wang W-W, Chia WK, et al., *Clinical Benefit of Allogenic Melanoma Cell Lysate-Pulsed Autologous Dendritic Cell Vaccine in MAGE-Positive Colorectal Cancer Patients*. Clin Chem Res. 2009; 15:7726–7736.

Zhen Hou, *Cytokine array analysis of peritoneal fluid between women with endometriosis of different stages and those without endometriosis. Biomarkers.* 2009;14(8): 604-618.

Yao Liang Tang, et al., *Hypoxic Preconditioning Enhances the Benefit of Cardiac Progenitor Cell Therapy for Treatment of Myocardial Infarction by Inducing CXCR4.* Circ Res. 2009;109:197723

RayBio® L-series Antibody Arrays are patent-pending technology developed by RayBiotech.

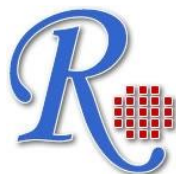
This product is intended for research only and is not to be used for clinical diagnosis. Our products may not be resold, modified for resale, or used to manufacture commercial products without written approval by RayBiotech, Inc.

Under no circumstances shall RayBiotech be liable for any damages arising out of the use of the materials.

Products are guaranteed for six months from the date of shipment when handled and stored properly. In the event of any defect in quality or merchantability, RayBiotech's liability to buyer for any claim relating to products shall be limited to replacement or refund of the purchase price.

RayBio® is a registered trademark of RayBiotech, Inc.

This product is for research use only.



©2021 RayBiotech, Inc.