



MONOCLONAL ANTIBODY

For research use only, Not for diagnostic use.

Catalog No. SHI-EXO-M03-50

Anti CD81 [Clone : 12C4]

BACKGROUND

CD81 (TAPA-1) is a cell surface protein which belongs to the tetraspanin superfamily. CD81 is identified as a component of the B lymphocyte receptor (BCR) and as a receptor for the Hepatitis C Virus.

Product type	Primary antibody
Immunogen	Human CD81 (a.a 36-54)
Raised in	Mouse
Myeloma	-
Clone number	12C4
Isotype	IgG2a
Source	Culture supernatant
Purification	Affinity purified by Protein G
Buffer	Phosphate buffered saline containing 0.1% NaN ₃ as a preservative
Concentration	1 mg / mL
Volume	50 ul
Label	Unlabeled
Specificity	Human CD81
Cross reactivity	Human and Bovine. Other species is not tested.
Storage	Store below - 40°C Aliquot to avoid cycles of freeze/thaw.

Application notes	• Western blotting: 1/500 - 1/2,000 (0.5 - 2ug/mL, non-reductive condition)
Recommended dilutions	• Immunoprecipitation: 1/200 – 1/1,000 (1- 5ug/mL) * Experiment example : Serum and Culture supernatant Exosome

Other applications have not been tested.
Optimal dilutions/concentrations should be determined by the end user.

References	-
-------------------	---

ANTIBODY CHARACTERIZATION

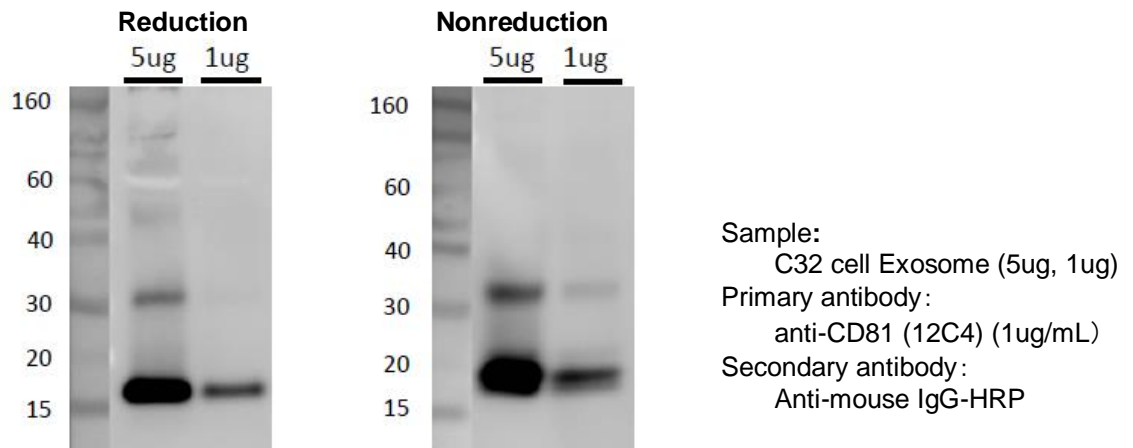


Fig.1 Western blot analysis of CD81 in C32 cell Exosome with anti-CD81 (12C4) antibody

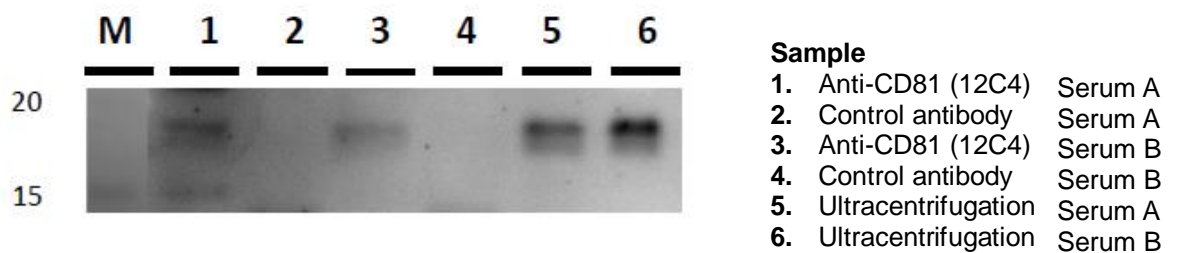
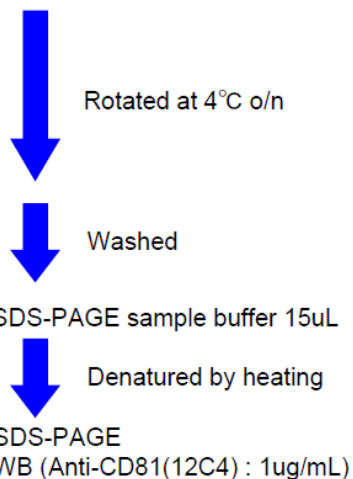


Fig.2 Immunoprecipitation in Human serum exosome

Protocol

Sample	
Serum	150uL
+	
Anti-CD81(12C4)	1ug (Solid phase Magnetic bead)
PBS	150uL



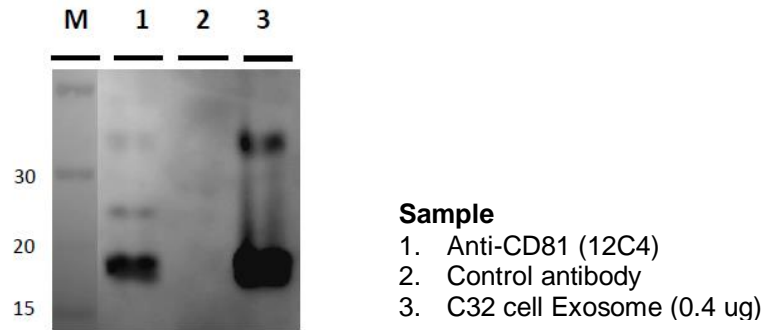
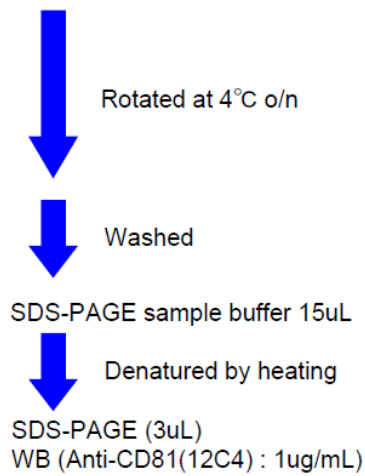


Fig.3 Immunoprecipitation in C32 cell (Melanoma cell line) Exosome

Protocol

Sample	
C32 cell Exosome	2 ug
+	
Anti-CD81(12C4)	1ug (Solid phase Magnetic bead)
PBS+1%BSA	200uL(Total)



RELATED PRODUCT:

Product Name	Application	Quantity	Maker	Cat#
Anti CD9 (12A12) Monoclonal Antibody	WB / IP / ELISA	100 ug	CAC	SHI-EXO-M01
Anti CD63 (8A12) Monoclonal Antibody	WB / IP	100 ug	CAC	SHI-EXO-M02
Anti CD81 (12C4) Monoclonal Antibody	WB / IP	100 ug	CAC	SHI-EXO-M03

[For research use only, Not for diagnostic use.]



COSMO BIO Co., LTD.
Inspiration for Life Science

TOYO 2CHOME, KOTO-KU, TOKYO, 135-0016, JAPAN

URL: <http://www.cosmobio.co.jp> e-mail: export@cosmobio.co.jp

[Outside Japan] Phone : +81-3-5632-9617 [国内連絡先] Phone : +81-3-5632-9610

FAX : +81-3-5632-9618 FAX : +81-3-5632-9619