



Anti-Vero Toxin1 (E. coli) / Shiga Toxin (S. dysenteriae) antibody

BACKGROUND

Vero toxin 1 (VT1) is produced by Vero toxin1-producing E.coli (VTEC) and has lethal activity to Vero cells. The primary structure of VT1 is identical or nearly identical to Shiga toxin (Stx) produced by Shigella dysenteriae serotype 1 and also called Slt 1 (Shiga-like toxin 1). VT1 is composed from one A subunit and five B subunits. Some E. coli strains produce both Slt1 and Slt2, and they share sequence identity of 55 %, but they are immunologically distinct.

To express the activity of VT/Stx, interaction with specific receptor Gb3 is indispensable. VT/Stx removes the 4324th adenine of 28S RNA of ribosome, inhibits protein synthesis and causes cell death. After invasion into cell subunit A is cut by furin to give A1 and A2. A1 is a catalytic fragment, and A2 is required for holo-enzyme formation by combining subunit B.

Applications: 1) Western blotting (2,000 fold dilution) (Fig. 1)

2) Immunoprecipitation (Fig. 2) 3) ELISA Other applications have not been tested.

Immunogen: Initial immunization by VT1 toxoid and booster by VT1 toxin.

Reactivity: VT1 of E. coli VTEC strain and Shiga toxin of Shigella dysenteriae 1.

Form: Rabbit antiserum added with 0.09% sodium azide.

Size: 100 uL

Storage: Sent at 4°C. Upon arrival, spin-down, aliquot and store at -20°C.

Data link: GenBank [M16625](#) Shiga-like toxin I subunit A and subunit B

UniProtKB/Swiss-Prot [Q9FBI2](#) Shiga toxin subunit A

UniProtKB/Swiss-Prot [Q7BQ98](#) Shiga toxin subunit B



Anti-Vero Toxin1 (E. coli) / Shiga Toxin (S. dysenteriae) antibody

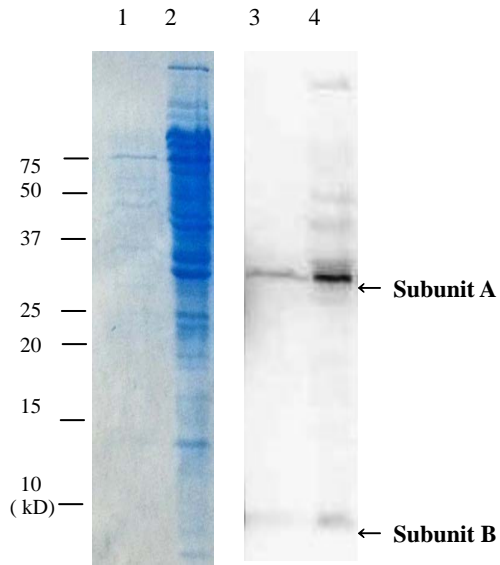


Fig.1. Detection of VT1 by western blotting with anti-VT1 antibody.

1. SDS-PAGE of culture medium of VTEC, stained with CBB
2. SDS-PAGE of crude extracts of VTEC cells, stained with CBB
3. Western blotting of culture medium of VTEC
4. Western blotting of crude extracts of VTEC cells.
Anti-VT1 antibody was used at 1/2,000 dilution

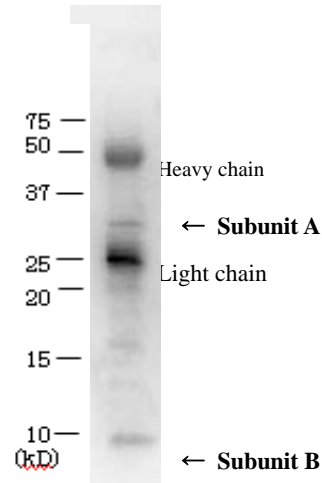


Fig. 2. Immunoprecipitation of VT1 from culture medium of VTEC with anti-VT1 antibody.

Arrows shows subunit A and subunit B of VT1.

Heavy chain and Light chain indicate those of IgG.

For research use only. Not for clinical diagnosis.

Manufactured by BioAcademia, Inc.



COSMO BIO Co., LTD.
Inspiration for Life Science

TOYO 2CHOME, KOTO-KU, TOKYO, 135-0016, JAPAN

http://www.cosmobio.co.jp/index_e.asp

Phone : +81-3-5632-9617

E-mail: export@cosmobio.co.jp

FAX : +81-3-5632-9618