

RPE529Ra01 50µg

Recombinant Gasdermin D (GSDMD)

Organism Species: *Rattus norvegicus* (Rat)

Instruction manual

FOR RESEARCH USE ONLY

NOT FOR USE IN CLINICAL DIAGNOSTIC PROCEDURES

12th Edition (Revised in Aug, 2016)

[PROPERTIES]

Source: Prokaryotic expression

Host: *E.coli*

Residues: Met1~Pro326

Tags: N-terminal His Tag

Subcellular Location: Nucleus, Extracellular matrix

Purity: > 90%

Traits: Freeze-dried powder

Buffer formulation: PBS, pH7.4, containing 0.01% SKL, 5% Trehalose.

Original Concentration: 2500µg/mL

Applications: Positive Control; Immunogen; SDS-PAGE; WB.

(May be suitable for use in other assays to be determined by the end user.)

Predicted isoelectric point: 6.0

Predicted Molecular Mass: 39.5KDa

Accurate Molecular Mass: 40kDa as determined by SDS-PAGE reducing conditions.

[USAGE]

Reconstitute in 10mM PBS (pH7.4) to a concentration of 0.1-1.0 mg/mL. Do not vortex.

[STORAGE AND STABILITY]

Storage: Avoid repeated freeze/thaw cycles.

Store at 2-8°C for one month.

Aliquot and store at -80°C for 12 months.

Stability Test: The thermal stability is described by the loss rate. The loss rate was determined by accelerated thermal degradation test, that is, incubate the protein at 37°C for 48h, and no obvious degradation and precipitation were observed. The loss rate is less than 5% within the expiration date under appropriate storage condition.

[SEQUENCE]

MPSAFAGVVK NVIKEVGGSG GELIPVDCLR NSTSFKPYCL LSRKLSSSWF
WKPRYTCVNL SIKDILEPSA PEPEPECFGN FQVSDVVDGN IQGSVTLSGT
GQGKISGGAA VSGSSSASMN VCMLRVTTQT WEIMQRERHL QQPENKILQQ
LRNRGDDVFN VTEVLQTKKE VQITQVHSHE GSGQFTLPGA SCLQEGEGKH
QSRKKMVTIP AGSILAFRVA QLLIGSEWDI LLISNEKKRT FELPSSGHKG
AVGQRRHDFS LLAVLHSIGE RLSLKSDGTN EEEVIREDFQ GLRAEVEAGS
SELRSLMEL RQQLLDVIGR ILQDQP

[IDENTIFICATION]

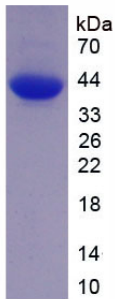


Figure. SDS-PAGE

[IMPORTANT NOTE]

The kit is designed for research use only, we will not be responsible for any issue if the kit was used in clinical diagnostic or any other procedures.