

**RPB179Ca01 5µg**

**Recombinant Interleukin 31 (IL31)**

**Organism Species: *Canis familiaris*; Canine (Dog)**

***Instruction manual***

FOR RESEARCH USE ONLY

NOT FOR USE IN CLINICAL DIAGNOSTIC PROCEDURES

---

12th Edition (Revised in Aug, 2016)

**[ PROPERTIES ]**

**Source:** Prokaryotic expression

**Host:** *E.coli*

**Residues:** Gln31~Gln159

**Tags:** N-terminal His Tag

**Subcellular Location:** Secreted

**Purity:** > 95%

**Traits:** Freeze-dried powder

**Buffer formulation:** PBS, pH7.4, containing 0.01% SKL, 5% Trehalose.

**Original Concentration:** 50µg/mL

**Applications:** Positive Control; Immunogen; SDS-PAGE; WB.

(May be suitable for use in other assays to be determined by the end user.)

**Predicted isoelectric point:** 5.2

**Predicted Molecular Mass:** 18.3kDa

**Accurate Molecular Mass:** 15kDa as determined by SDS-PAGE reducing conditions.

**[ USAGE ]**

Reconstitute in ddH<sub>2</sub>O to a concentration of 0.1-0.5 mg/mL. Do not vortex.

**[ STORAGE AND STABILITY ]**

**Storage:** Avoid repeated freeze/thaw cycles.

Store at 2-8°C for one month.

Aliquot and store at -80°C for 12 months.

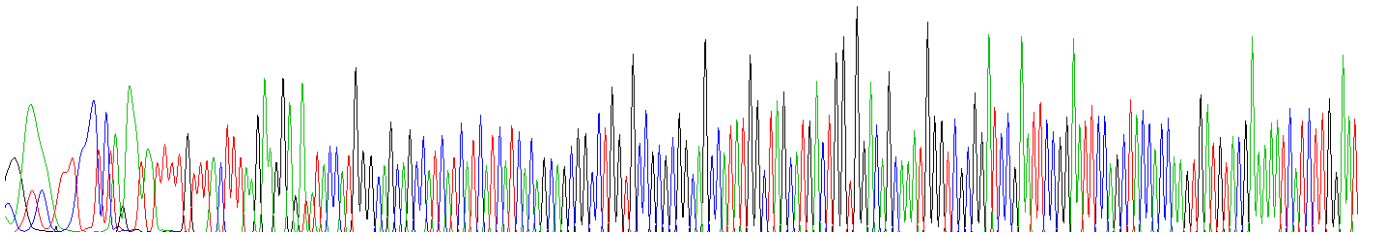
**Stability Test:** The thermal stability is described by the loss rate. The loss rate was determined by accelerated thermal degradation test, that is, incubate the protein at 37°C for 48h, and no obvious degradation and precipitation were observed. The loss rate is less than 5% within the expiration date under appropriate storage condition.

**[ SEQUENCE ]**

QLPPSDVRKI ILELQPLSRG  
LLEDYQKKET GVPESNRTLL LCLTSDSQPP RLNSSAILPY FRAIRPLSDK  
NIIDKIIIEQL DKLKFQHEPE TEISVPADTF ECKSFILTIL QFSACLESV  
FKSLNSGPQ

**[ IDENTIFICATION ]**

ATGATG GTT CCTCAGATATTTTGTTCCTTATGAGGGGATATACCATGGGCGAGGACATCATCATCATCAGCAGGCGGCTGGTGGCGCGGCGACATATGGCTAGCATGACTGGTGGACAGCAATGGGTGGGGATCCGAAATTCGGATTCAGCTACCCAGAGTGTACGAAAAATCATCTGGAT



**Figure . Gene Sequencing (extract)**

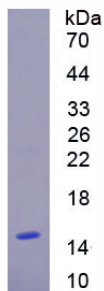


Figure. SDS-PAGE

**[ IMPORTANT NOTE ]**

The kit is designed for research use only, we will not be responsible for any issue if the kit was used in clinical diagnostic or any other procedures.