

RPB081Mu02 100µg

Recombinant Heat Shock 70kDa Protein 1A (HSPA1A)

Organism Species: *Mus musculus* (Mouse)

Instruction manual

FOR RESEARCH USE ONLY

NOT FOR USE IN CLINICAL DIAGNOSTIC PROCEDURES

12th Edition (Revised in Aug, 2016)

[PROPERTIES]

Source: Prokaryotic expression

Host: *E.coli*

Residues: Met1~Asp641

Tags: N-terminal His Tag

Subcellular Location: Nucleus, Cytoplasm

Purity: > 90%

Traits: Freeze-dried powder

Buffer formulation: 20mM Tris, 150mM NaCl, pH8.0, containing 0.01% SKL, 5% Trehalose.

Original Concentration: 200µg/mL

Applications: Positive Control; Immunogen; SDS-PAGE; WB.

(May be suitable for use in other assays to be determined by the end user.)

Predicted isoelectric point: 5.4

Predicted Molecular Mass: 73.8kDa

Accurate Molecular Mass: 70kDa as determined by SDS-PAGE reducing conditions.

[USAGE]

Reconstitute in 20mM Tris, 150mM NaCl (pH8.0) to a concentration of 0.1-1.0 mg/mL. Do not vortex.

[STORAGE AND STABILITY]

Storage: Avoid repeated freeze/thaw cycles.

Store at 2-8°C for one month.

Aliquot and store at -80°C for 12 months.

Stability Test: The thermal stability is described by the loss rate. The loss rate was determined by accelerated thermal degradation test, that is, incubate the protein at 37°C for 48h, and no obvious degradation and precipitation were observed. The loss rate is less than 5% within the expiration date under appropriate storage condition.

[SEQUENCE]

```

MAKNTAIGID LGTTYSCVGV FQHGKVEIIA NDQGNRTTPS YVAFTDTERL
IGDAAKNQVA LNPQNTVFDA KRLIGRKFGD AVVQSDMKHW PFQVVNDGDK
PKVQVNYKGE SRSFFPEEIS SMVLTKMKEI AEAYLGHPVT NAVITVPAYF
NDSQRQATKD AGVIAGLNVL RIINEPTAAA IAYGLDRTGK GERNVLIFDL
GGGTFDVSIL TIDDGIFEVK ATAGDTHLGG EDFDNRLVSH FVEEFKRKHK
KDISQNKRAV RRLRTACERA KRTLSSSTQA SLEIDSLFEG IDFYTSITRA
RFEELCSDLF RGTLEPVEKA LRDAKMDKAQ IHDLVLVGGG TRIPKVQKLL
QDFFNGRDLN KSINPDEAVA YGAAVQAAIL MGDKSENVQD LLLLDVAPLS
LGLETAGGVM TALIKRNSTI PTKQTQTFIT YSDNQPGVLI QVYEGERAMT
RDNLLGRFE LSGIPPAPRG VPQIEVTFDI DANGILNVTA TDKSTGKANK
ITITNDKGR L SKEEIERMVQ EAERYKAEDE VQRDRVAAKN ALESYAFNMK
SAVEDEGLKG KLSEADKKKV LDKCQEVISW LDSNTLADKE EFVHKREELE
RVCSPISGL YQGAGAPGAG GFGAQAPKGA SGSGPTIEEV D

```

[IDENTIFICATION]

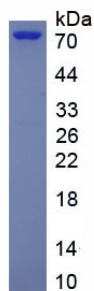


Figure. SDS-PAGE

[IMPORTANT NOTE]

The kit is designed for research use only, we will not be responsible for any issue if the kit was used in clinical diagnostic or any other procedures.