

RPA121Hu02 100µg

Recombinant Stem Cell Factor Receptor (SCFR)

Organism Species: *Homo sapiens (Human)*

Instruction manual

FOR RESEARCH USE ONLY

NOT FOR USE IN CLINICAL DIAGNOSTIC PROCEDURES

12th Edition (Revised in Aug, 2016)

[PROPERTIES]

Source: Prokaryotic expression

Host: *E.coli*

Residues: Gln26~Pro524

Tags: N-terminal His Tag

Subcellular Location: Membrane, Cytoplasm

Purity: > 90%

Traits: Freeze-dried powder

Buffer formulation: 20mM Tris, 150mM NaCl, pH8.0, containing 1mM EDTA, 1mM DTT, 0.01% SKL, 5% Trehalose and Proclin300.

Original Concentration: 200µg/mL

Applications: Positive Control; Immunogen; SDS-PAGE; WB.

(May be suitable for use in other assays to be determined by the end user.)

Predicted isoelectric point: 6.4

Predicted Molecular Mass: 59.7kDa

Accurate Molecular Mass: 60kDa as determined by SDS-PAGE reducing conditions.

[USAGE]

Reconstitute in 20mM Tris, 150mM NaCl (pH8.0) to a concentration of 0.1-1.0 mg/mL. Do not vortex.

[STORAGE AND STABILITY]

Storage: Avoid repeated freeze/thaw cycles.

Store at 2-8°C for one month.

Aliquot and store at -80°C for 12 months.

Stability Test: The thermal stability is described by the loss rate. The loss rate was determined by accelerated thermal degradation test, that is, incubate the protein at 37°C for 48h, and no obvious degradation and precipitation were observed. The loss rate is less than 5% within the expiration date under appropriate storage condition.

[SEQUENCE]

```

                                QPSVS PGEPSPPSIH PGKSDLIVRV
GDEIRLLCTD PGFVKWTFEI LDETNEKQON EWITEKAEAT NTGKYTCTNK
HGLSNSIYVF VRDPAKLFLV DRSLYGKEDN DTLVRCPLTD PEVTNYSLKG
CQGKPLPKDL RFIPDPKAGI MIKSVKRAYH RLCLHCSVDQ EGKSVLSEKF
ILKVRPAFKA VPVVSVSKAS YLLREGEEFT VTCTIKDVSS SVYSTWKREN
SQTKLQEKYN SWHHGDFNYE RQATLTISSA RVNDSGVFMC YANNTFGSAN
VTTTLEVVDK GFINIFPMIN TTVFVNDGEN VDLIVEYEAF PKPEHQWIY
MNRTFTDKWE DYPKSENESEN IRYVSELHLT RLKGTEGGTY TFLVSNSDVN
AAIAFNVYVN TKPEILTYDR LVNGMLQCVA AGFPEPTIDW YFCPGTEQRC
SASVLPVDVQ TLNSSGPPFG KLVVQSSIDS SAFKHNGTVE CKAYNDVGKT
SAYFNFAFKG NNKEQIHPHT LFTP

```

[IDENTIFICATION]

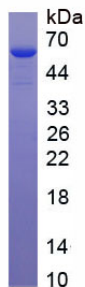


Figure. SDS-PAGE

[IMPORTANT NOTE]

The kit is designed for research use only, we will not be responsible for any issue if the kit was used in clinical diagnostic or any other procedures.