

**PAD562Mu01**

**Polyclonal Antibody to Mitogen Activated Protein Kinase Kinase 2 (MAP2K2)**

**Organism Species: *Mus musculus* (Mouse)**

***Instruction manual***

FOR RESEARCH USE ONLY

NOT FOR USE IN CLINICAL DIAGNOSTIC PROCEDURES

---

12th Edition (Revised in Aug, 2016)

## **[ PROPERTIES ]**

**Source:** Polyclonal antibody preparation

**Host:** Rabbit

**Purification:** Antigen-specific affinity chromatography followed by Protein A affinity chromatography

**Traits:** Liquid

**Concentration:** 0.95mg/ml

**UOM:** 100µg(106µl)

**Cross Reactivity:** Human; Rat; Cavia; Canine; Porcine; Bovine; Caprine; Ovine; Gallus.

**Applications:** WB; IHC; ICC; IP.

## **[ IMMUNOGEN ]**

**Immunogen:** Recombinant MAP2K2 (Leu44~Ser313) expressed in *E.coli*

**Accession No.:** RPD562Mu01

## **[ APPLICATIONS ]**

Western blotting: 0.5-2µg/mL

Immunohistochemistry: 5-20µg/mL

Immunocytochemistry: 5-20µg/mL

Optimal working dilutions must be determined by end user.

## **[ FORMULATION ]**

**Form & Buffer:** Supplied as solution form in 0.01M PBS, pH7.4, containing 0.05% Proclin-300, 50% glycerol.

## **[ STORAGE AND STABILITY ]**

**Storage:** Avoid repeated freeze/thaw cycles.

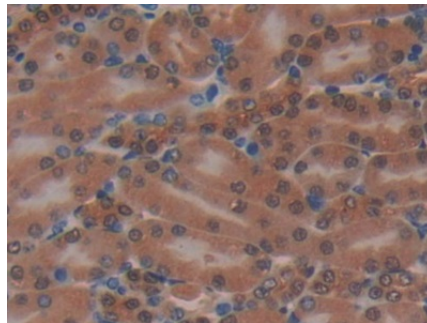
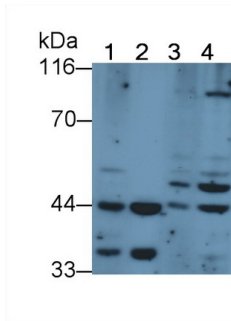
Store at 4°C for frequent use.

Aliquot and store at -20°C for 12 months.

**Stability Test:** The thermal stability is described by the loss rate. The loss rate was determined by accelerated thermal degradation test, that is, incubate the protein at 37°C for 48h, and no

obvious degradation and precipitation were observed. The loss rate is less than 5% within the expiration date under appropriate storage condition.

**[ IDENTIFICATION ]**



Western Blot; Sample: Lane1: Rat Cerebrum lysate; Lane2: Porcine Cerebrum lysate; Lane3: HeLa cell lysate; Lane4: MCF7 cell lysate  
 Primary Ab: 2µg/ml Rabbit Anti-Mouse MAP2K2 Antibody  
 Second Ab: 0.2µg/mL HRP-Linked Caprine Anti-Rabbit IgG Polyclonal Antibody  
 (Catalog: SAA544Rb19)

DAB staining on IHC-P;  
 Samples: Mouse Kidney Tissue;  
 Primary Ab: 10µg/ml Rabbit Anti-Mouse MAP2K2 Antibody  
 Second Ab: 2µg/mL HRP-Linked Caprine Anti-Rabbit IgG Polyclonal Antibody  
 (Catalog: SAA544Rb19)

**[ IMPORTANT NOTE ]**

The kit is designed for research use only, we will not be responsible for any issue if the kit was used in clinical diagnostic or any other procedures.