

RPH819Mu01 100µg

Recombinant Interleukin 1 Receptor Accessory Protein (IL1RAP)

Organism Species: *Mus musculus* (Mouse)

Instruction manual

FOR RESEARCH USE ONLY

NOT FOR USE IN CLINICAL DIAGNOSTIC PROCEDURES

12th Edition (Revised in Aug, 2016)

[**PROPERTIES**]

Source: Prokaryotic expression

Host: *E.coli*

Residues: Ser21~Thr367

Tags: N-terminal His Tag

Subcellular Location: Membrane, Secreted

Purity: > 90%

Traits: Freeze-dried powder

Buffer formulation: 100mMNaHCO₃, 500mMNaCl, pH8.3, containing 0.01% SKL, 5% Trehalose and Proclin300.

Original Concentration: 200µg/mL

Applications: Positive Control; Immunogen; SDS-PAGE; WB.

(May be suitable for use in other assays to be determined by the end user.)

Predicted isoelectric point: 6.0

Predicted Molecular Mass: 43.7kDa

Accurate Molecular Mass: 44kDa as determined by SDS-PAGE reducing conditions.

[**USAGE**]

Reconstitute in 100mM NaHCO₃, 500mM NaCl (pH8.3) to a concentration of 0.1-1.0 mg/mL. Do not vortex.

[**STORAGE AND STABILITY**]

Storage: Avoid repeated freeze/thaw cycles.

Store at 2-8°C for one month.

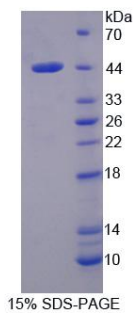
Aliquot and store at -80°C for 12 months.

Stability Test: The thermal stability is described by the loss rate. The loss rate was determined by accelerated thermal degradation test, that is, incubate the protein at 37°C for 48h, and no obvious degradation and precipitation were observed. The loss rate is less than 5% within the expiration date under appropriate storage condition.

[SEQUENCE]

```
SERCDDWGLD TMRQIQVFED EPARIKCPLF
EHFLKYNYST AHSSGLTLIW YWTRQDRDLE EPINFRLPEN RISKEKDVLW
FRPTLLNDTG NYTCMLRNTT YCSKVAFPLE VVQKDFNS AMRFPVHKMY
IEHGIHKITC PNVDGYFPSS VKPSVTWYKG CTEIVDFHNV LPEGMNLSFF
IPLVSNNNGNY TCVVTYPENG RLFHLTRTVT VKVVGSPKDA LPPQIYSPND
RVVYEKEPGE ELVIPCKVYF SFIMDSHNEV WWTIDGKKPD DVTVDITINE
SVSYSSTEDE TRTQILSIKK VTPEDLRRNY VCHARNTKGE AEQAAKVKQK
VIPPRYTVEL ACGFGAT
```

[IDENTIFICATION]



[IMPORTANT NOTE]

The kit is designed for research use only, we will not be responsible for any issue if the kit was used in clinical diagnostic or any other procedures.