

**RPF860Hu01 10µg**

**Recombinant Secretogranin III (SCG3)**

**Organism Species: *Homo sapiens* (Human)**

***Instruction manual***

FOR RESEARCH USE ONLY

NOT FOR USE IN CLINICAL DIAGNOSTIC PROCEDURES

---

12th Edition (Revised in Aug, 2016)

**[ PROPERTIES ]**

**Source:** Prokaryotic expression

**Host:** *E.coli*

**Residues:** Phe20~Leu468

**Tags:** N-terminal His Tag

**Subcellular Location:** Cytoplasm

**Purity:** > 95%

**Traits:** Freeze-dried powder

**Buffer formulation:** 100mMNaHCO<sub>3</sub>, 500mMNaCl, pH8.3, containing 0.01% SKL, 5% Trehalose and Proclin300.

**Original Concentration:** 200µg/mL

**Applications:** Positive Control; Immunogen; SDS-PAGE; WB.

(May be suitable for use in other assays to be determined by the end user.)

**Predicted isoelectric point:** 4.9

**Predicted Molecular Mass:** 63.7kDa

**Accurate Molecular Mass:** 64kDa as determined by SDS-PAGE reducing conditions.

**[ USAGE ]**

Reconstitute in 100mM NaHCO<sub>3</sub>, 500mM NaCl (pH8.3) to a concentration of 0.1-1.0 mg/mL. Do not vortex.

**[ STORAGE AND STABILITY ]**

**Storage:** Avoid repeated freeze/thaw cycles.

Store at 2-8°C for one month.

Aliquot and store at -80°C for 12 months.

**Stability Test:** The thermal stability is described by the loss rate. The loss rate was determined by accelerated thermal degradation test, that is, incubate the protein at 37°C for 48h, and no obvious degradation and precipitation were observed. The loss rate is less than 5% within the expiration date under appropriate storage condition.

**[ SEQUENCE ]**

F PKPGGSQDKS LHNRELSAER PLNEQIAEAE  
EDKIKKTYPP ENKPGQSNYS FVDNLNLLKA ITEKEKIEKE RQSIRSSPLD  
NKLNVEDVDS TKNRKLIDDY DSTKSGLDHK FQDDPDGLHQ LDGTPLTAED  
IVHKIAARIY EENDRAVFDK IVSKLLNLGL ITESQAHTLE DEVAEVLQKL  
ISKEANNYEE DPNKPTSWTE NQAGKIPEKV TPMAAIQDGL AKGENDETVS  
NTLTLTNGLE RRTKTYSEDN FEELQYFPNF YALLKSIDSE KEAKEKETLI  
TIMKTLIDFV KMMVKYGTIS PEEGVSYLEN LDEMIALQTK NKLEKNATDN  
ISKLFPAPSE KSHEETDSTK EEAAMEKEY GSLKDSTKDD NSNPGGKTDE  
PKGKTEAYLE AIRKNIEWLK KHDKKGKED YDLSKMRDFI NKQADAYVEK  
GILDKEEAEA IKRIYSSL

**[ IDENTIFICATION ]**

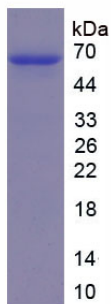


Figure. SDS-PAGE

**[ IMPORTANT NOTE ]**

The kit is designed for research use only, we will not be responsible for any issue if the kit was used in clinical diagnostic or any other procedures.